

Marie Curie Training Courses

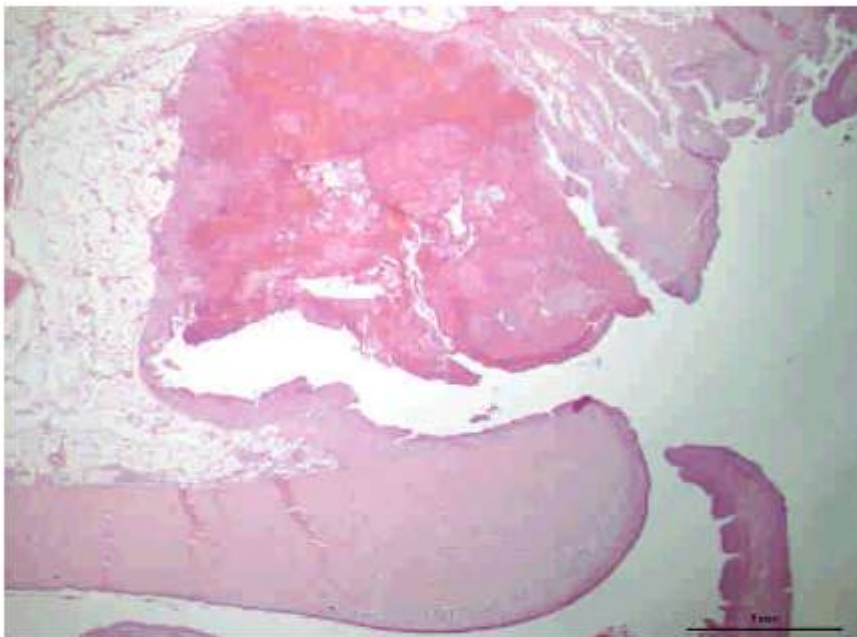
Summer School 2007 – Avian N1

N1. Hen.

Organ? Morphologic diagnosis? Special procedure?

N1. Hen

022016



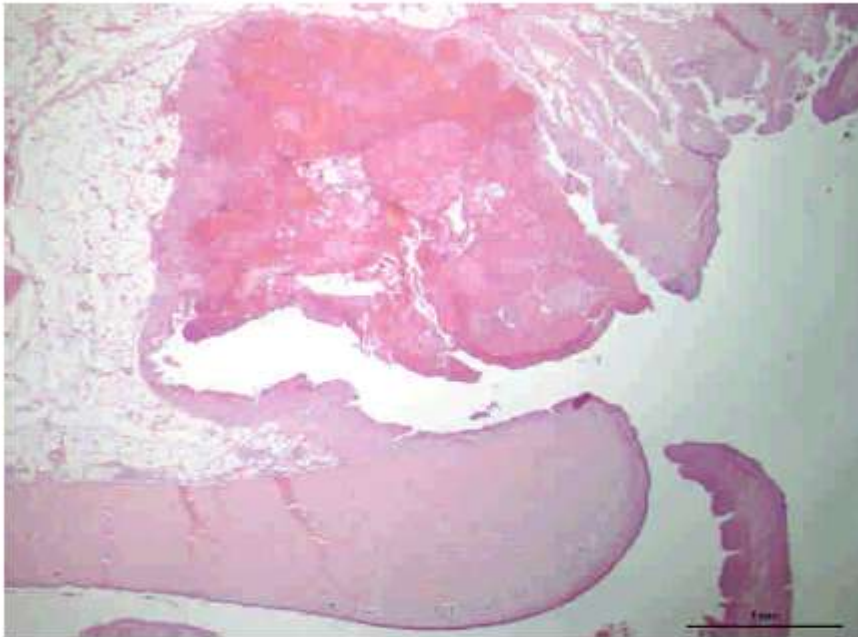
Organ?

Morphologic diagnosis?

Special procedure?

N1. Hen

022016

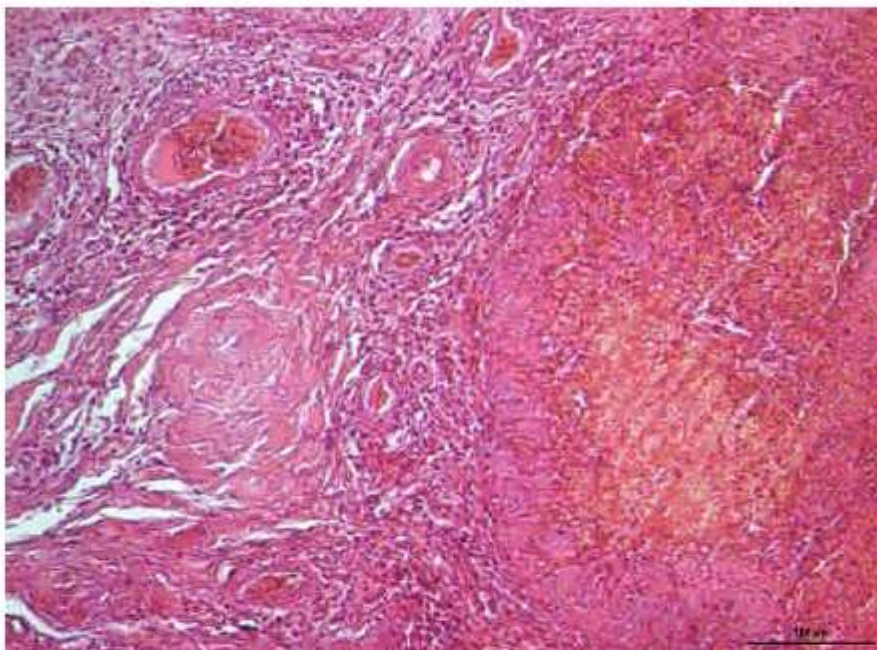


Joint (long bones, synovial membranes, tendon sheaths ± skin).

Synovial membranes show marked and diffuse hypertrophy due to a variable combination of...

N1. Hen

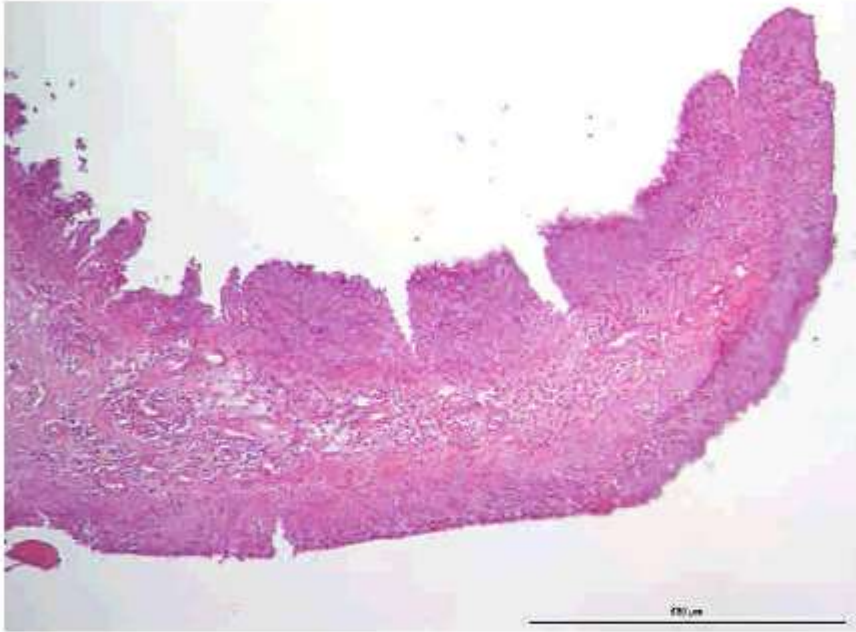
022016



extracellular deposition of an amorphous to slightly fibrillar eosinophilic material (**amyloid**), with involvement of blood vessels (replacement of medial smooth muscle by amyloid: **amyloid vasculopathy**),...

N1. Hen

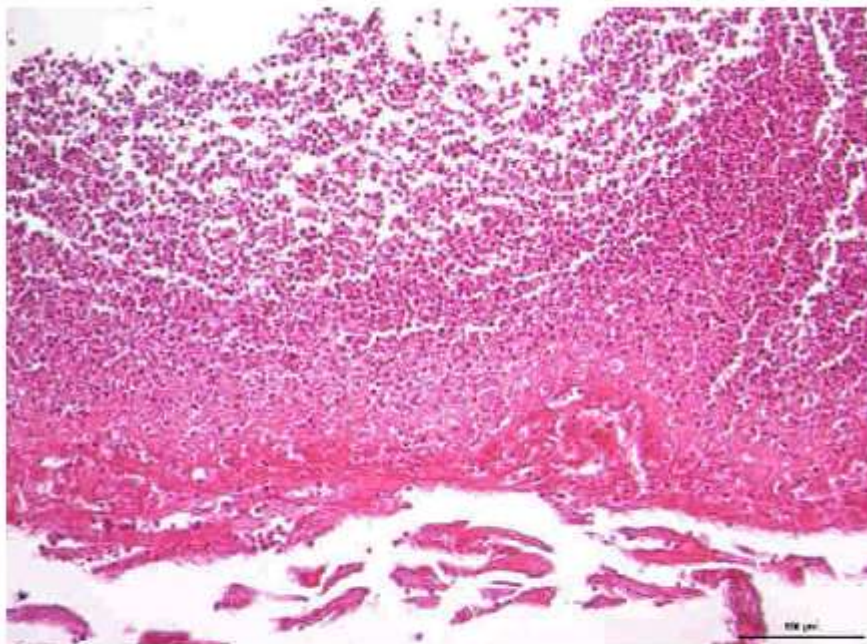
022016



epithelial papillary **hyperplasia**,
marked inflammation with numerous **plasma cells**, moderate amount of
heterophils and lymphocytes, macrophages.

N1. Hen

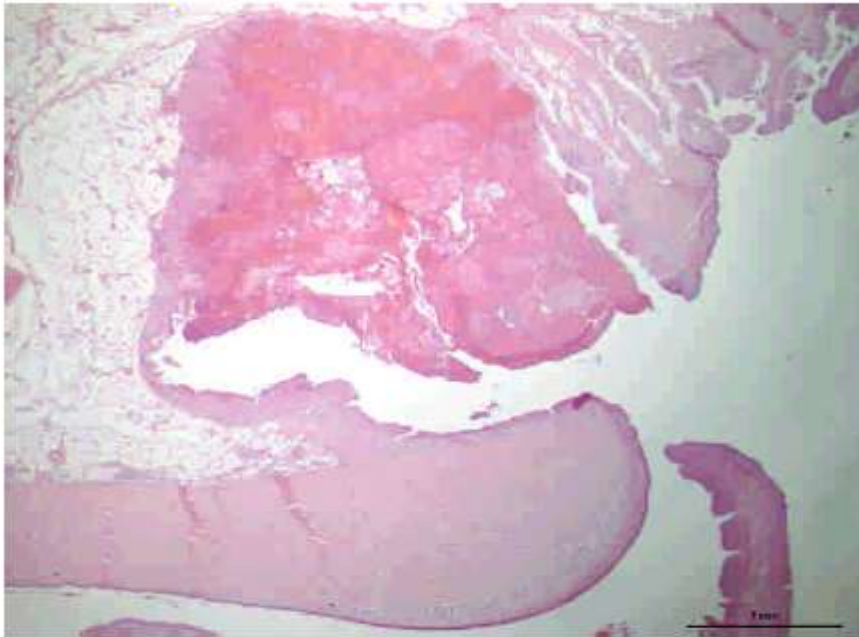
022016



Multifocally there are synovial erosions,
extravasation of red blood cells (**hemorrhages**),
and **fibrin** exudate.

N1. Hen/ diagnosis

022016



Diffuse (marked) synovial amyloid deposition (**amyloid arthropathy**).
Multifocal (marked) (chronic) fibrinous and hyperplastic **synovitis**.
Special procedure: Congo Red stain for amyloid detection.