

Marie Curie Training Courses

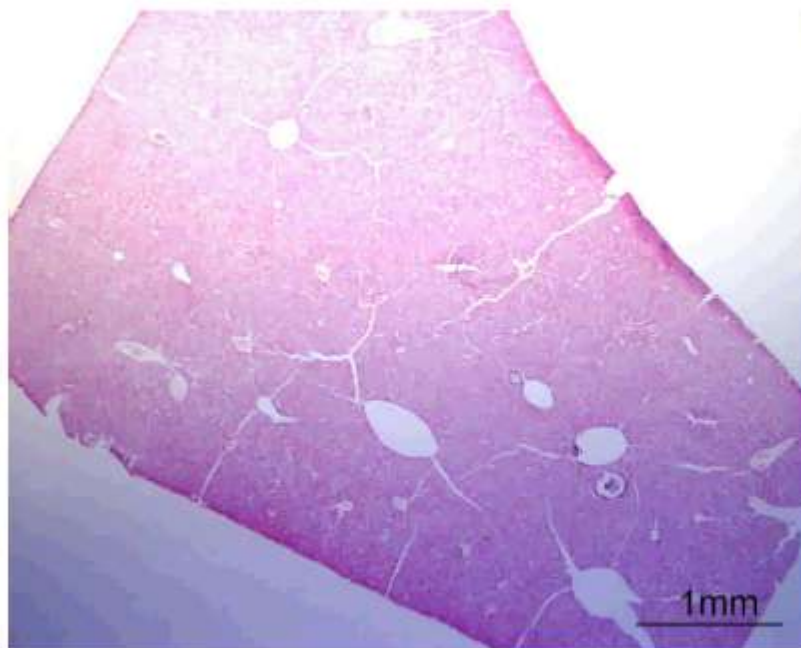
Summer School 2007 – Avian N2

N2. Duck.

Organ? Morphologic diagnosis?

N2. Duck

013778D

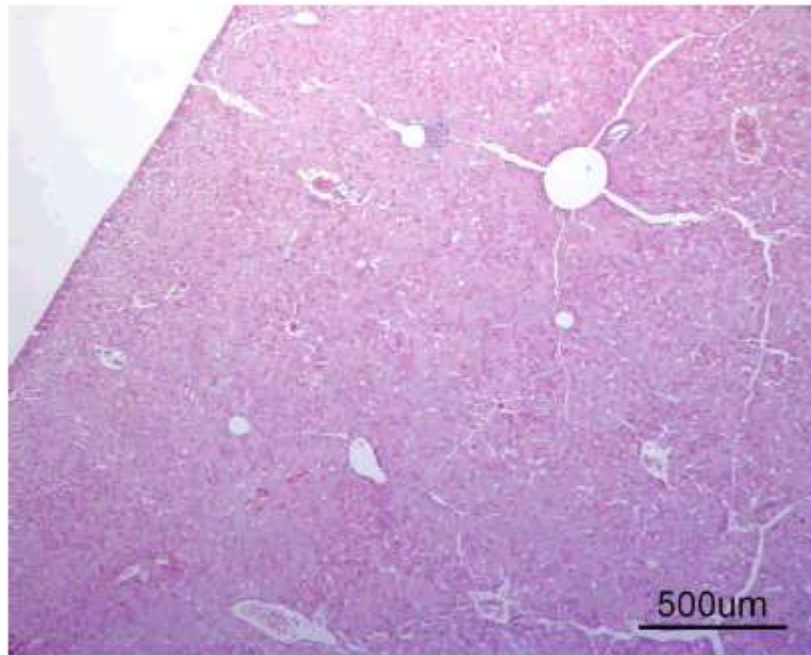


Organ?

Morphologic diagnosis?

N2. Duck

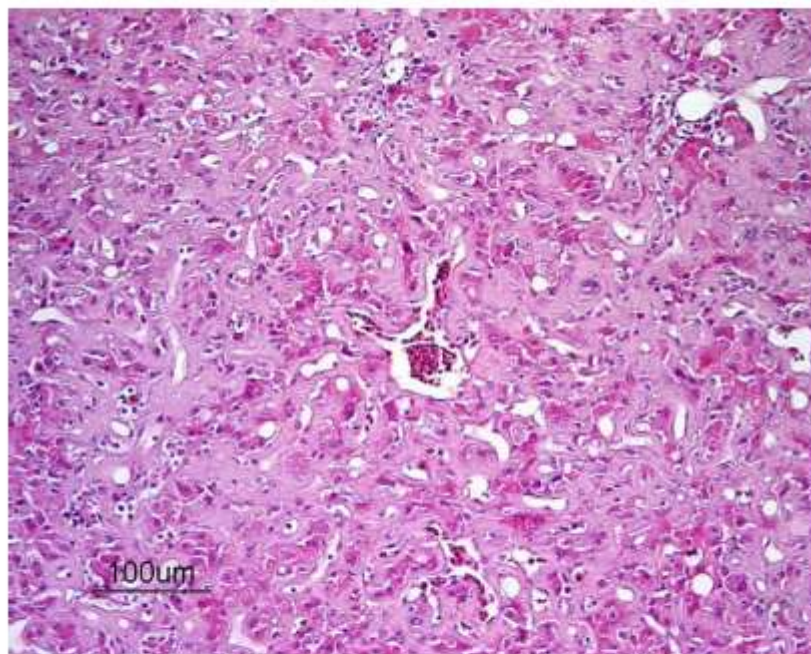
013778D



Liver.
Diffuse lesion.

N2. Duck

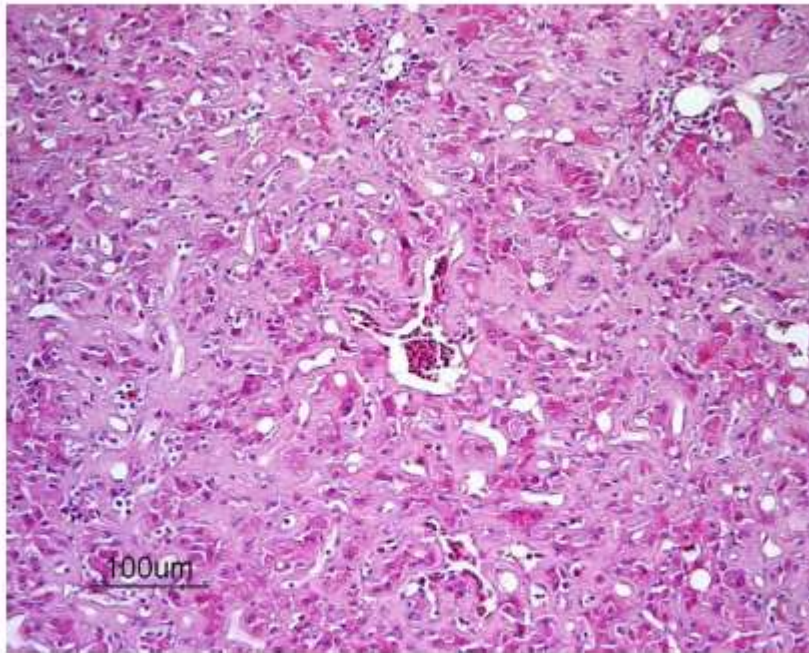
013778D



Spaces of Disse: enlargement, extracellular amorphous (to slightly fibrillar) eosinophilic deposit: **amyloid**.

N2. Duck

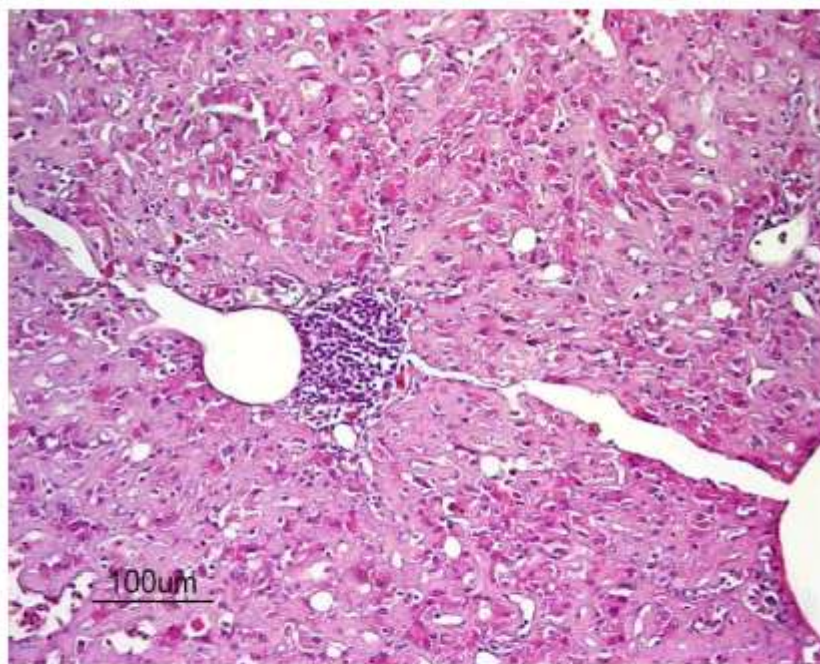
013778D



Hepatocytes: atrophy, angular shape.
Hepatocyte **rarefaction**.

N2. Duck

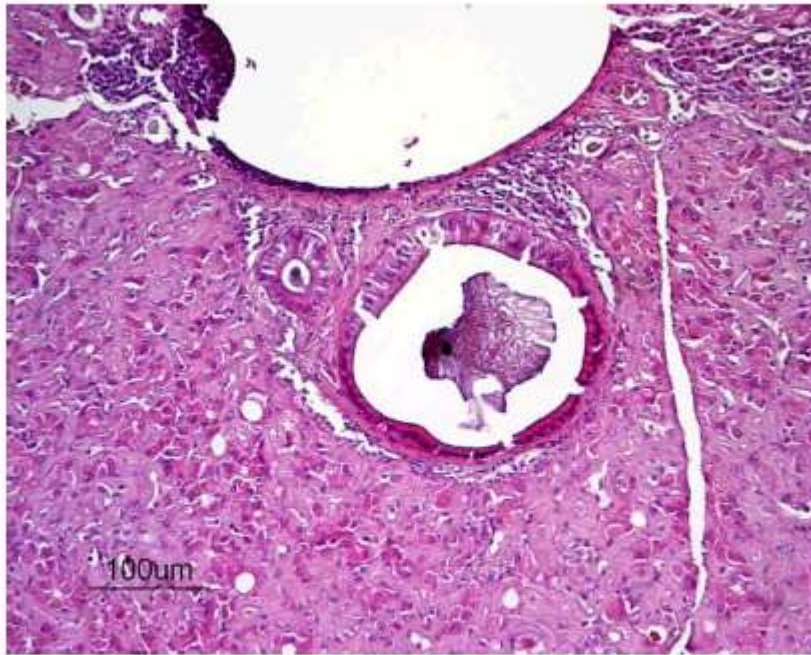
013778D



Sinusoids: collapse, mild diffuse lymphocytic infiltrate.
Portal tract: **lymphoid follicle**.

N2. Duck

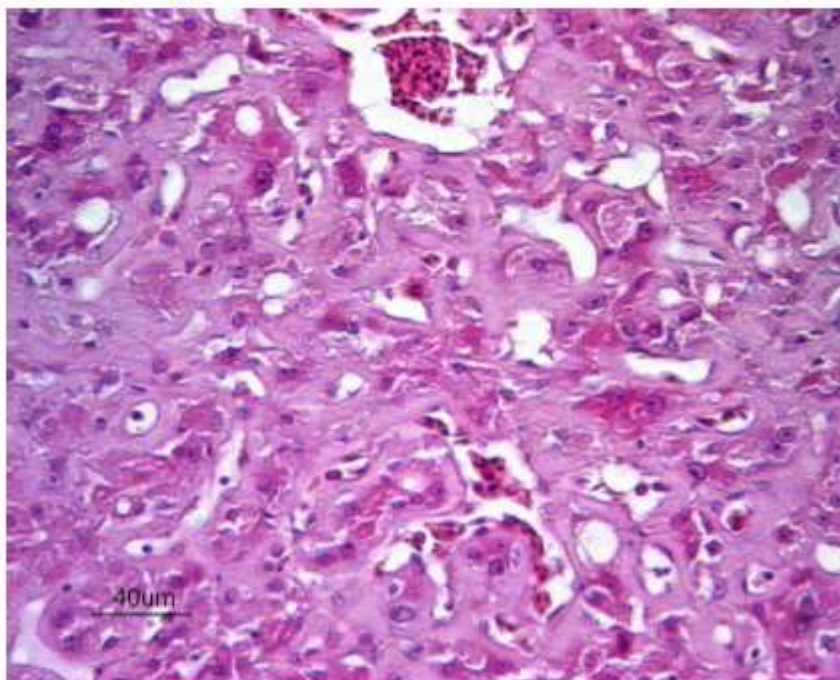
013778D



Portal tract: **bile duct ectasia, bile stasis.**

N2. Duck/ diagnosis

013778D



Diffuse marked chronic **hepatic amyloidosis** with hepatocyte atrophy and loss.