

Marie Curie Training Courses

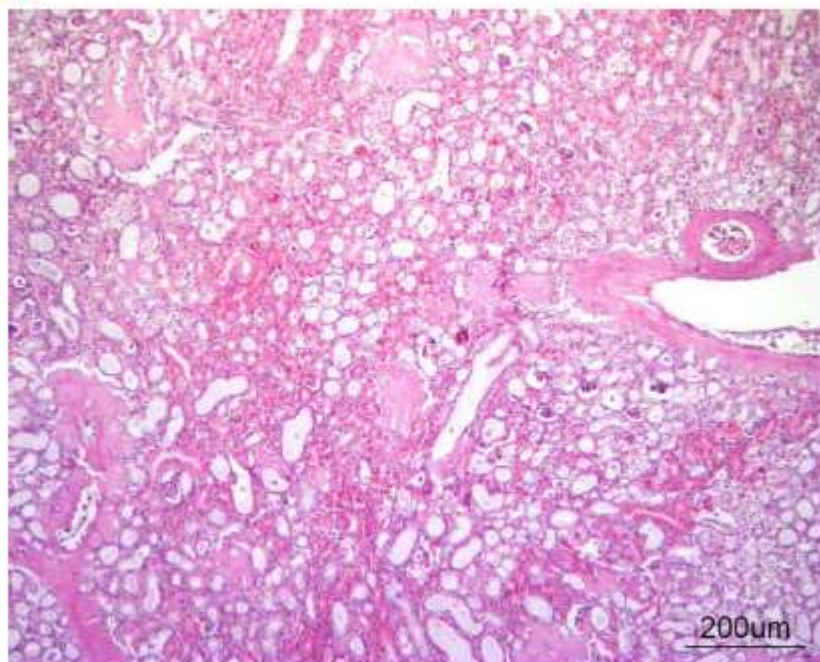
Summer School 2007 – Avian N3

N3. Gull.

Organ? Morphologic diagnoses?

N3. Gull

020961

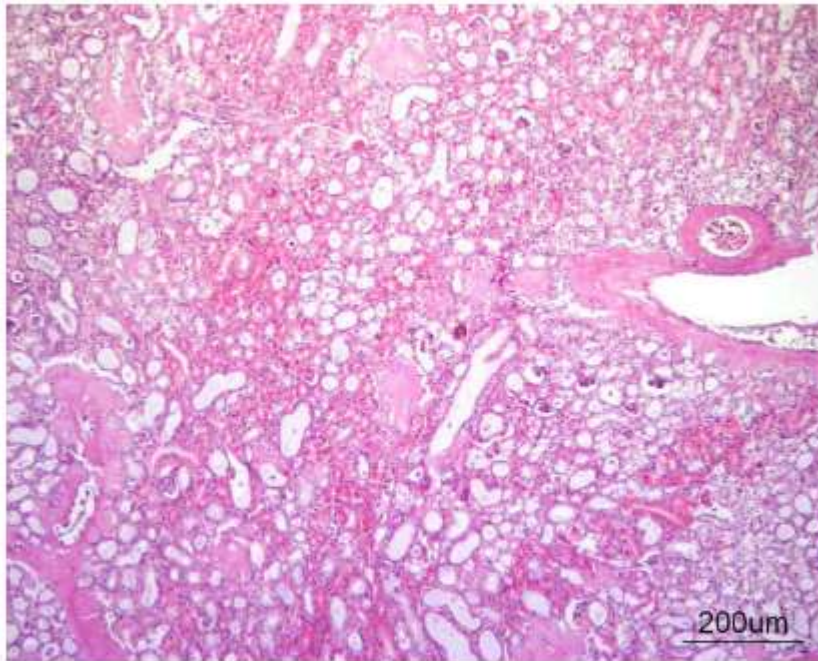


Organ?

Morphologic diagnoses?

N3. Gull

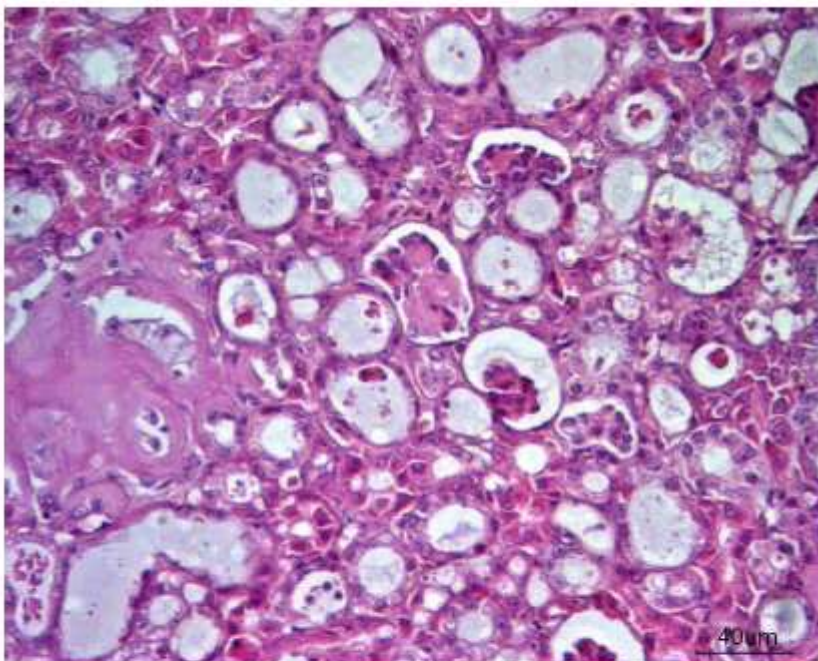
020961



Most of the **arteries and veins** in the **kidney** show a marked parietal thickening of the media and loss of normal smooth muscle architecture due to the deposition of an amorphous to slightly fibrillar, eosinophilic, pale, extracellular material (**amyloid**).

N3. Gull

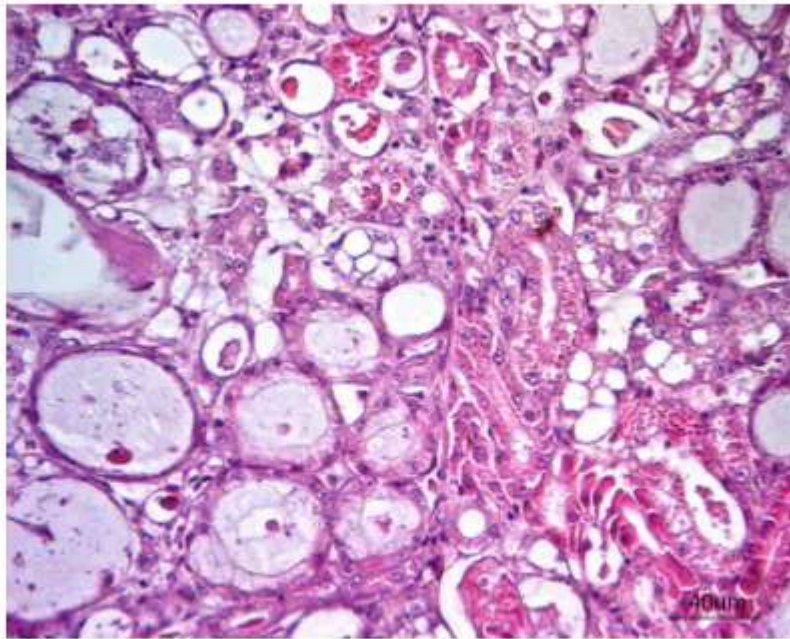
020961



There is also marked multifocal amyloid deposition within the **medullary interstitium**, and segmental amyloid deposition within a moderate proportion of **glomeruli**.

N3. Gull

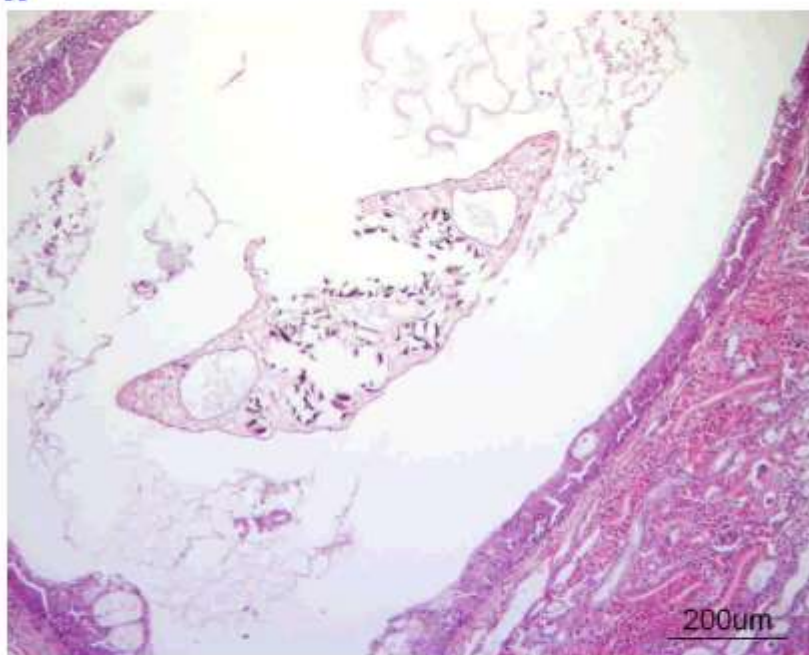
020961



Distal tubules show a variable combination of: **ectasia**; pressure **atrophy** of their epithelial lining; luminal accumulation of pale basophilic fluid; rare **necrosis** and dystrophic **calcification**.

N3. Gull

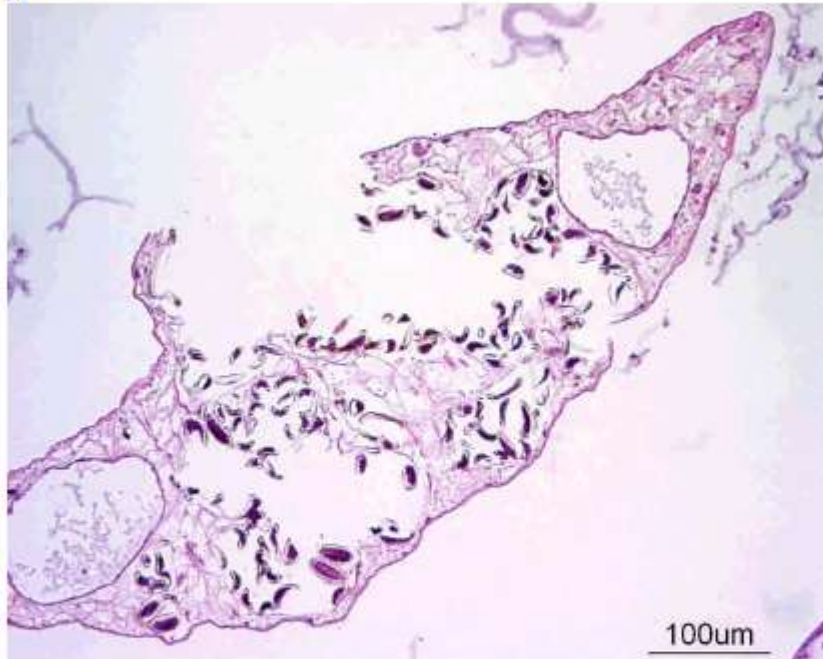
020961



The **pelvis** is moderately distended and surrounded by **lymphocytes**, **plasma cells** and **fibrosis**; lymphocytes transmigrate through the urothelium; there is moderate urothelial **hyperplasia**.

N3. Gull

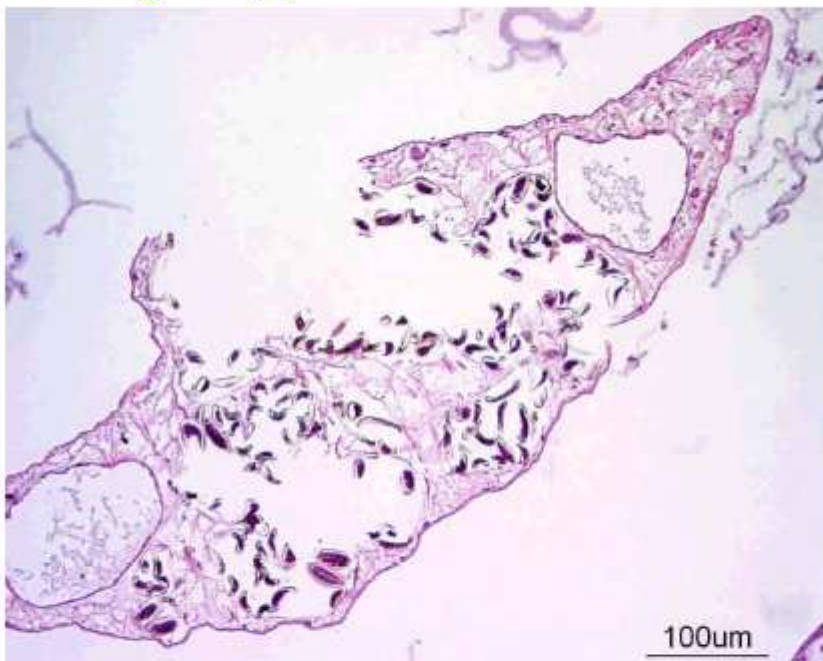
020961



Within the pelvic lumen is a moderate amount of mucus and necrotic cells debris, and a 1,5 mm x 300 μ m flat (leaf-shaped) **metazoan parasite** with a thin **integument**, a parenchyma with smooth muscle, a paired **caecum** and an **uterus** filled with embryonated eggs (**adult trematode**).

N3. Gull/ diagnoses

020961



Diffuse marked renal vascular **amyloidosis**.

Mild chronic lymphoplasmacytic **pyelitis** with a luminal adult **Trematode**.

(Trematode: probably *Renicola* sp.)