

Marie Curie Training Courses

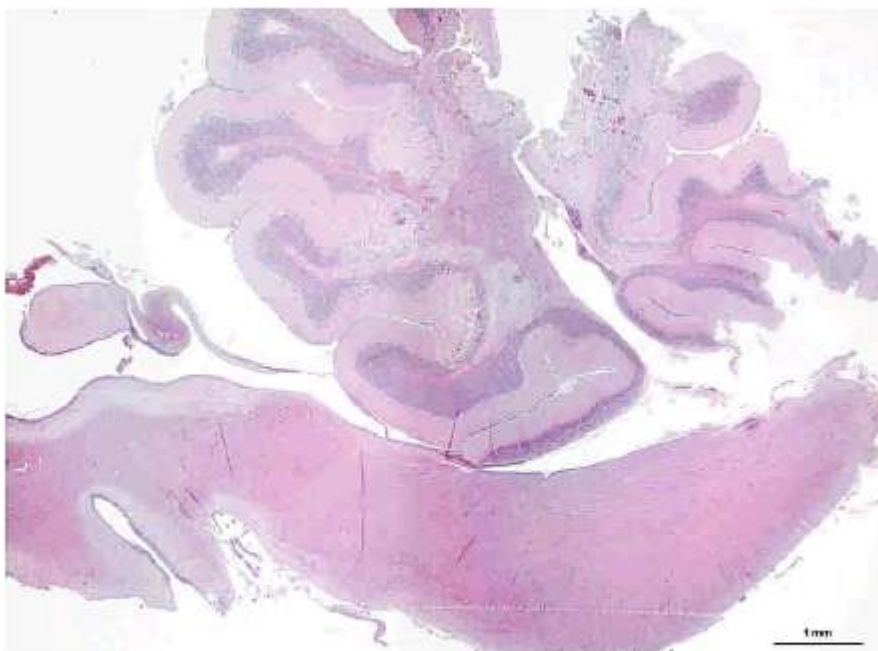
Summer School 2007 – Avian N4

N4. Chicken.

Organ? Morphologic diagnosis? Name the disease.

N4. Chicken

032027D



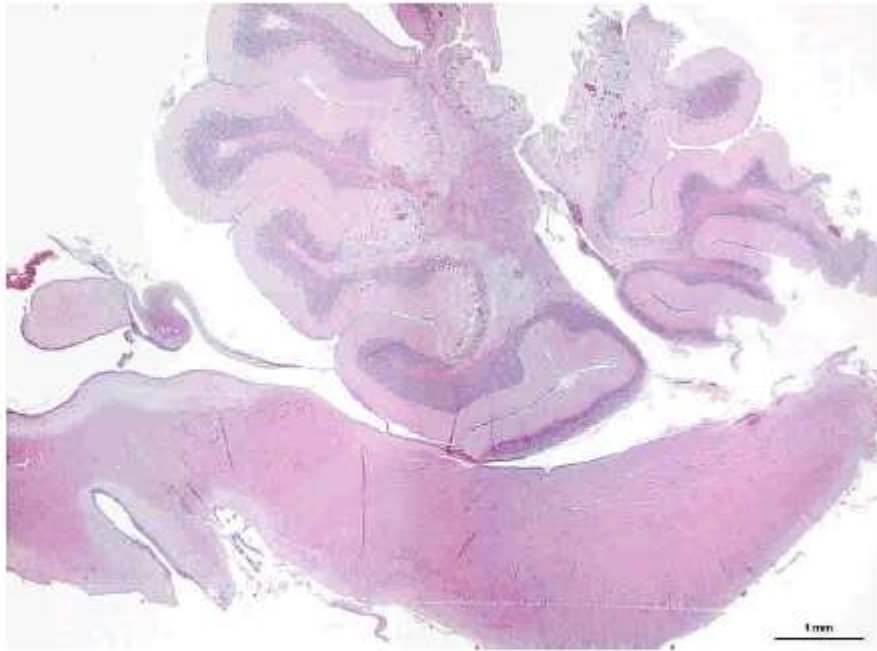
Organ?

Morphologic diagnosis?

Name the disease.

N4. Chicken

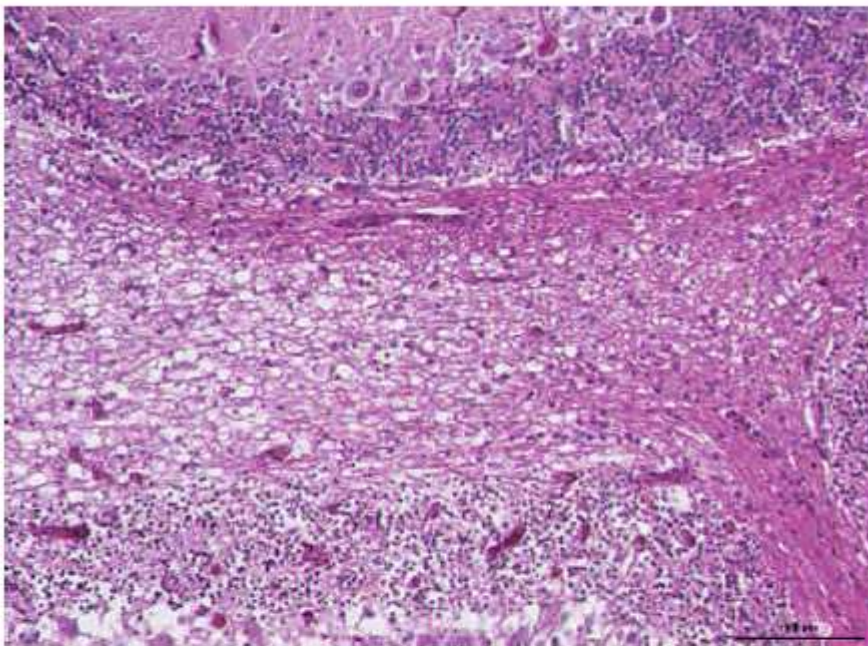
032027D



Changes are restricted to the **cerebellum**. There is a well-demarcated, **focal extensive**, cerebellar degeneration and necrosis affecting **both white matter and grey matter**....

N4. Chicken

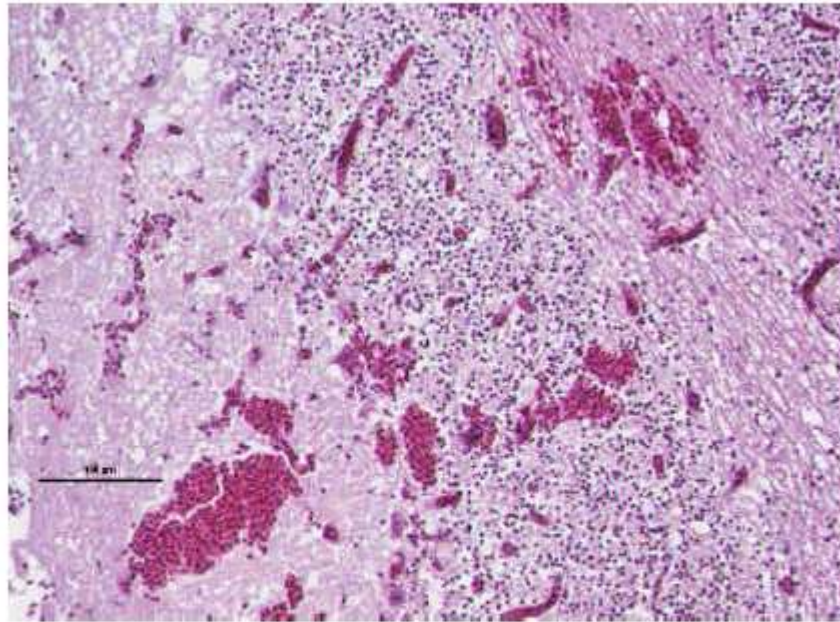
032027D



the **neuropil** is distended by coalescing empty spaces: spongiosis (**edema**), neurons and glial cells (particularly in the granular layer) are shrunken, hyperchromatic with pyknotic nucleus (**ischemic necrosis**)

N4. Chicken

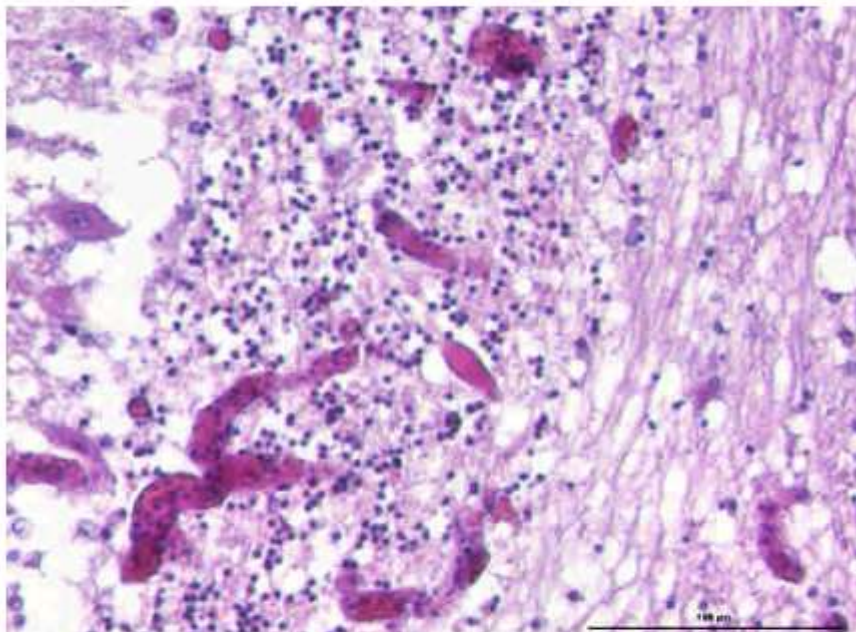
032027D



there are multiple 50-200-micrometer foci of extravasated red blood cells (**hemorrhages**),

N4. Chicken

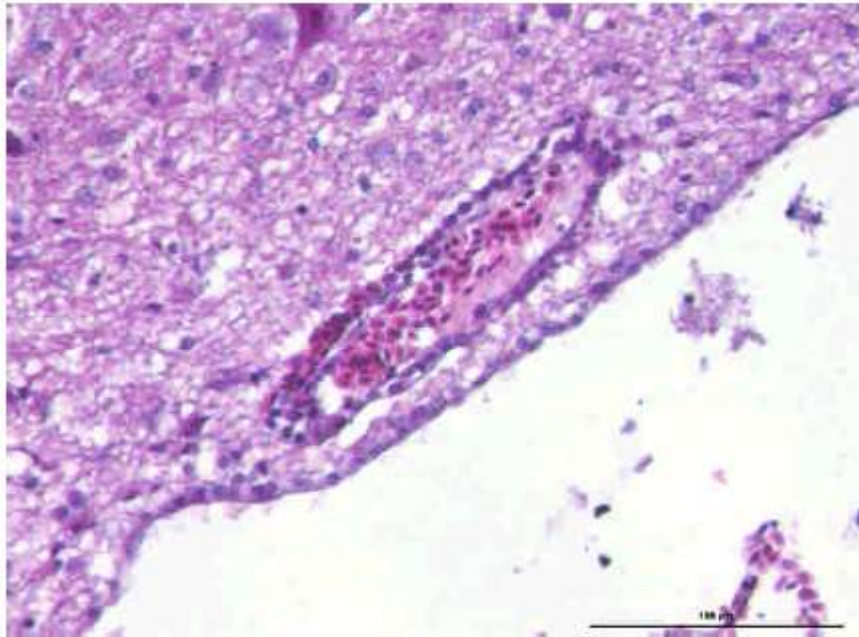
032027D



capillary blood vessels are occluded by an amorphous eosinophilic slightly fibrillar material (fibrin) and red blood cells (**hyaline capillary thrombosis**),

N4. Chicken

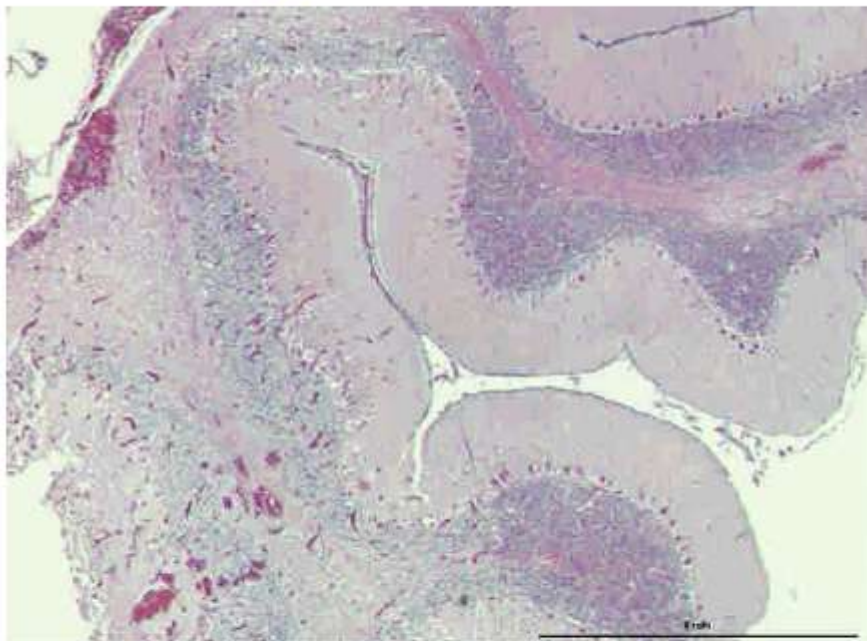
032027D



Virchow-Robin space: **perivascular cuff**.
the number of glial cells is increased (**gliosis**).
there is multifocal axonal dilatation (**spheroids**).

N4. Chicken/ diagnosis

032027D



Focal extensive acute marked **cerebellar necrosis** (encephalomalacia) with edema, hemorrhage and multiple **capillary hyaline thrombosis**.

Etiology: Vitamin E deficiency

Name the disease: nutritional encephalomalacia