



ECVP/ESVP Summer School in Veterinary Pathology

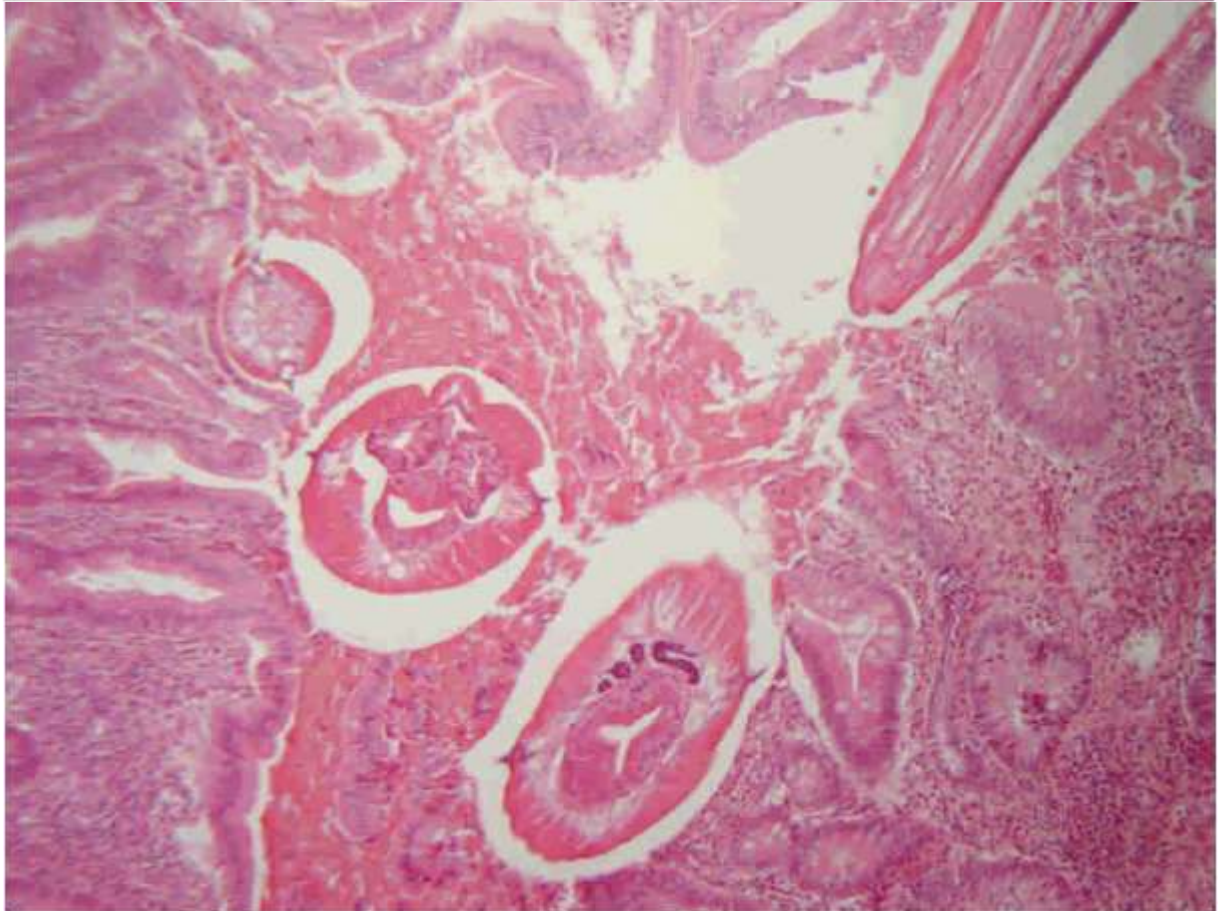
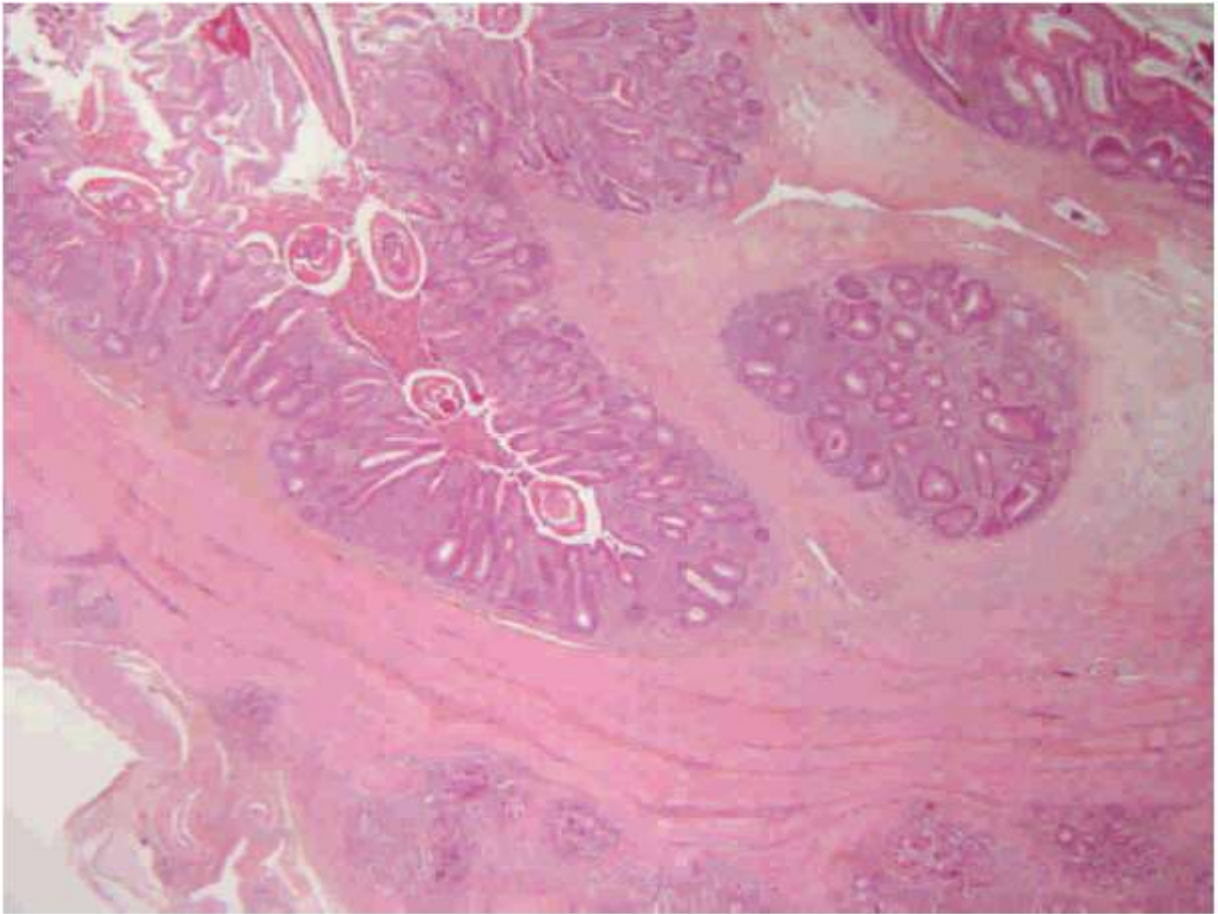


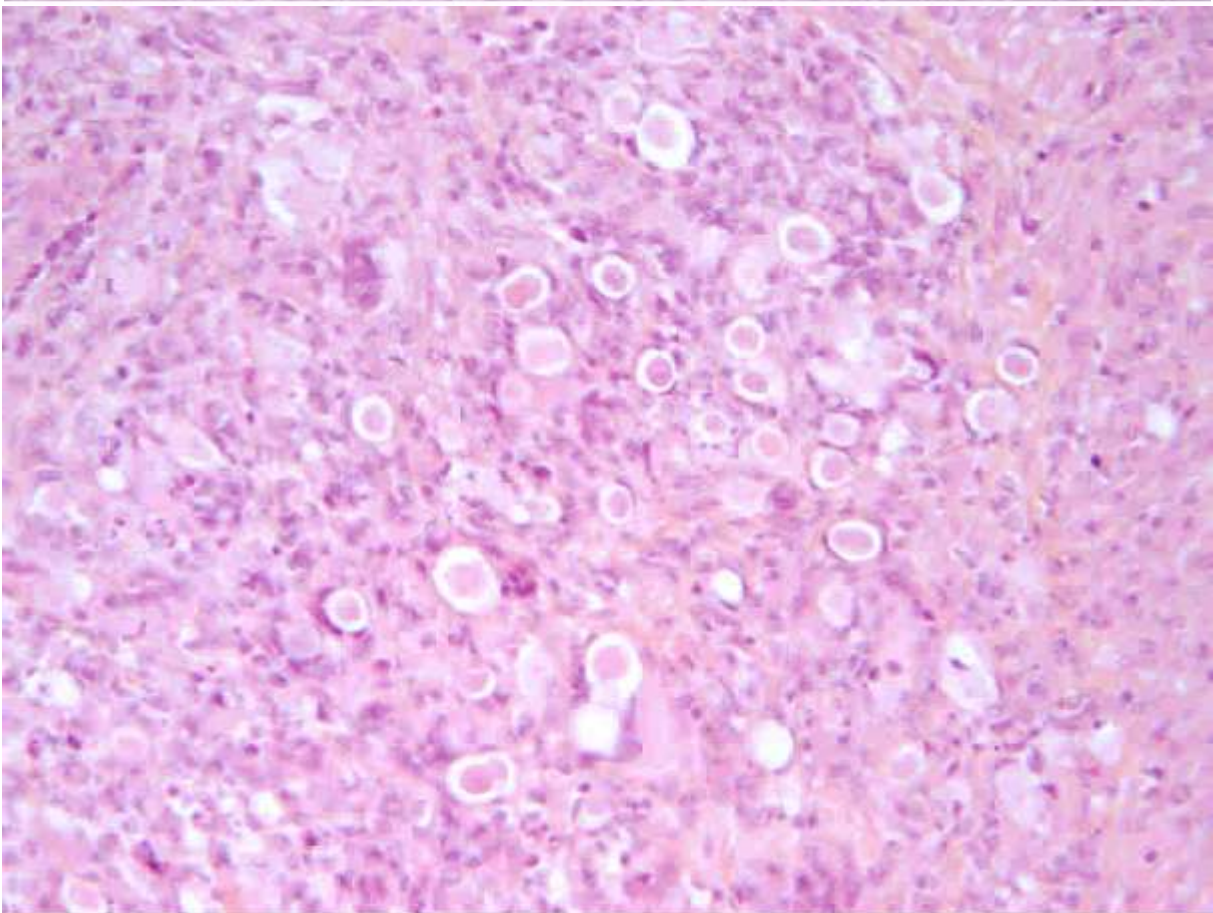
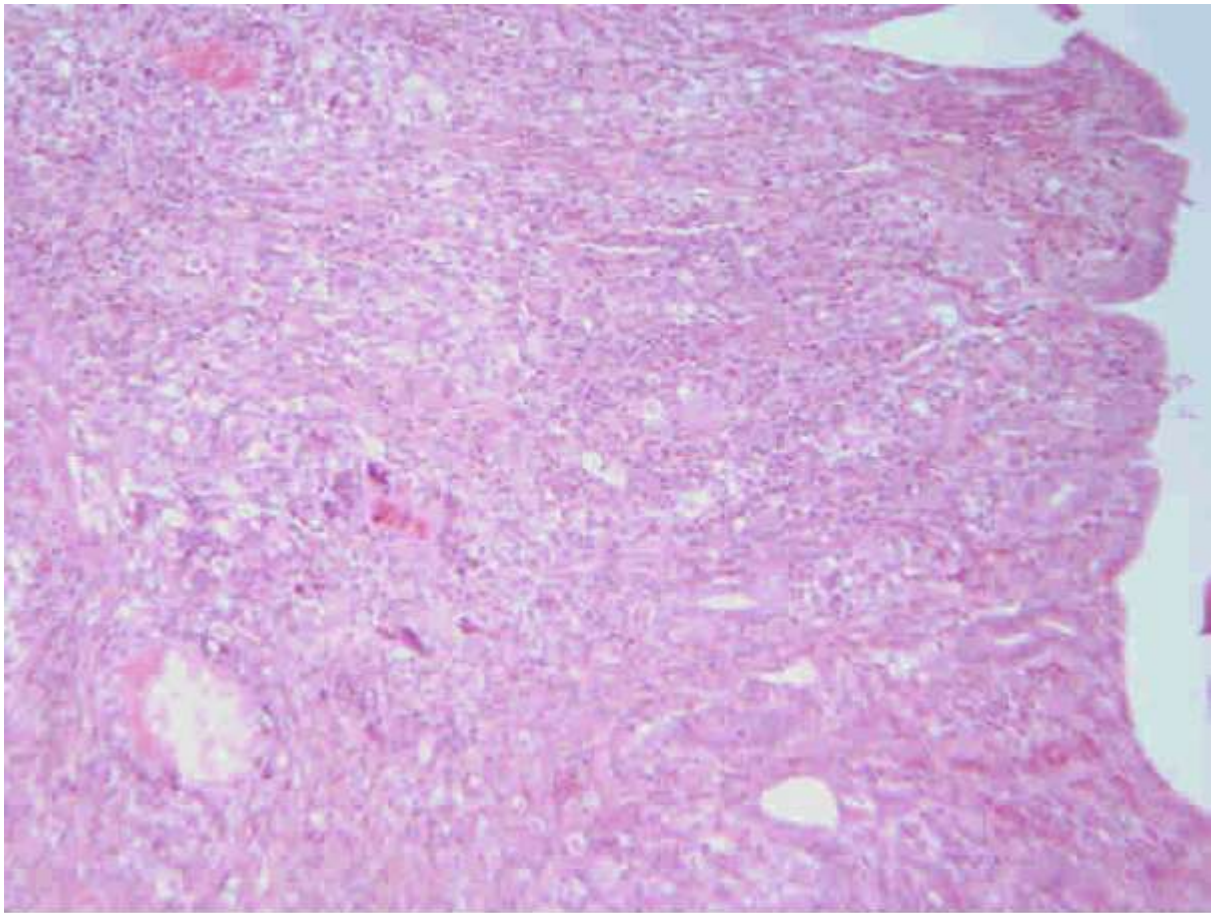
Marie Curie Training Courses

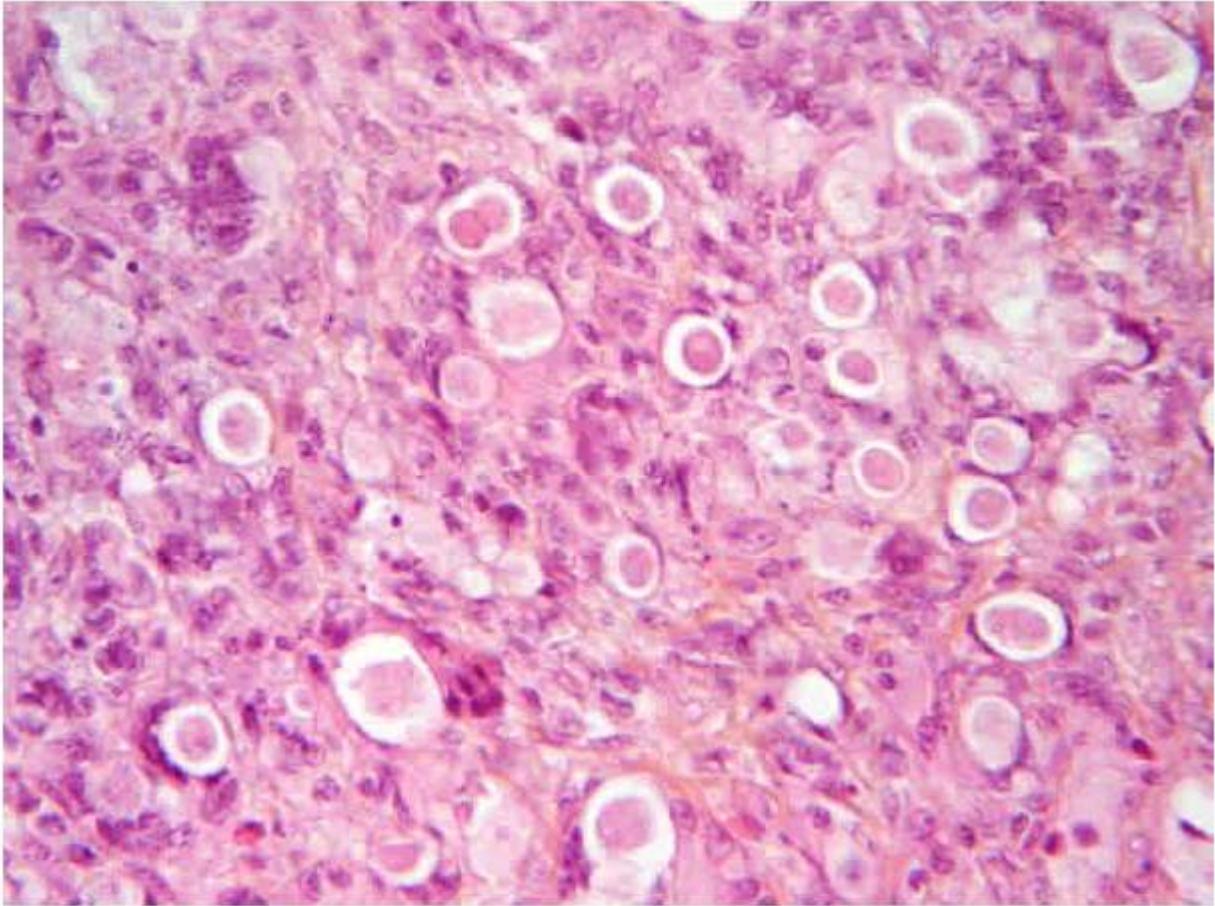
Summer School 2007 – Avian P2

P2 : Tissue from a chicken

- Morphologic diagnosis/es
- Etiology/ies







P2 : Tissue from a chicken

- Morphologic diagnosis/es
 - Caecum, superficial typhlitis, diffuse, hyperplastic and erosive, associated with luminal nematodes, morphology consistent with *Heterakis* sp.
 - Caecum, mural typhlitis, subacute, diffuse, macrophagic and lymphocytic, associated with intralésional protozoans, morphology consistent with trophozoites of *Histomonas meleagridis*)
- Etiology/ies
Histomonas meleagridis