



F08/1136

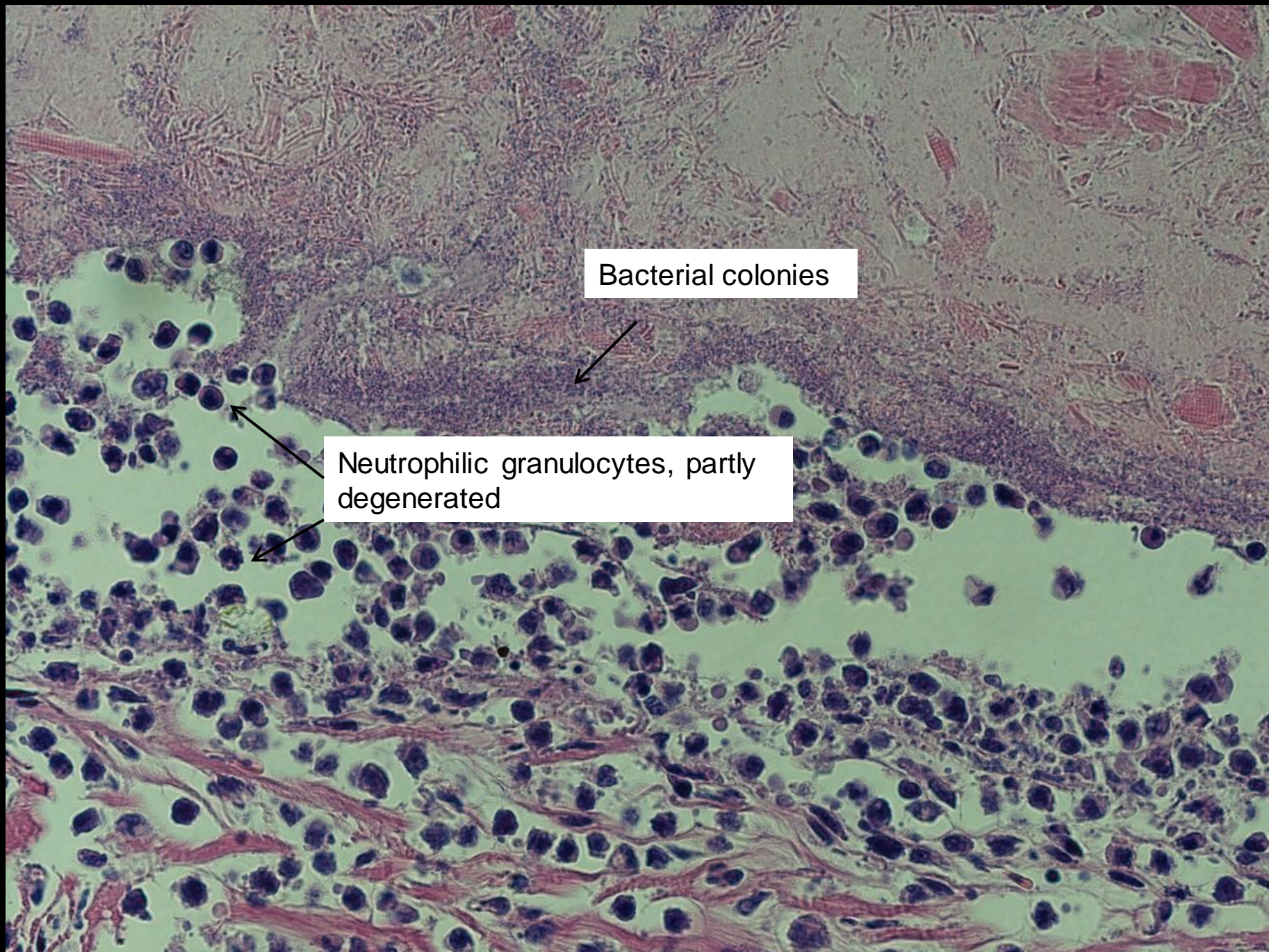
Rainbow trout, fish farm

Macroscopy: multiple white nodules on the skin, sometimes ulcerated

Organ: skin





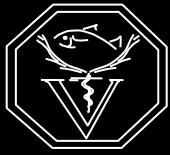


Bacterial colonies

Neutrophilic granulocytes, partly degenerated



Oedema of scale pockets



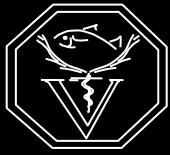
Morphological diagnosis

Skin, necrotising and purulent dermatitis, focal extensive, severe, acute with bacterial colonies

Aetiology

Aeromonas salmonicida subsp. *salmonicida*

Furunculosis



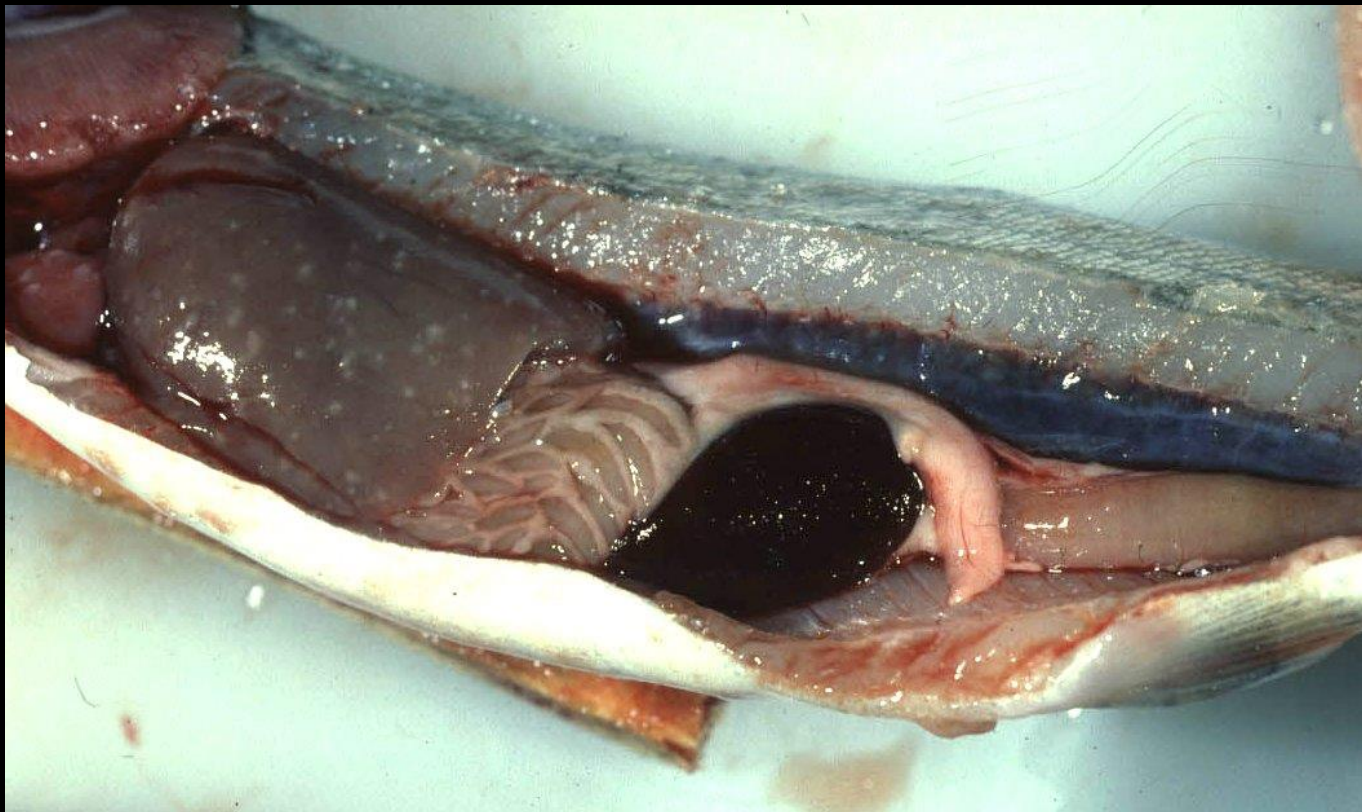
F09/852

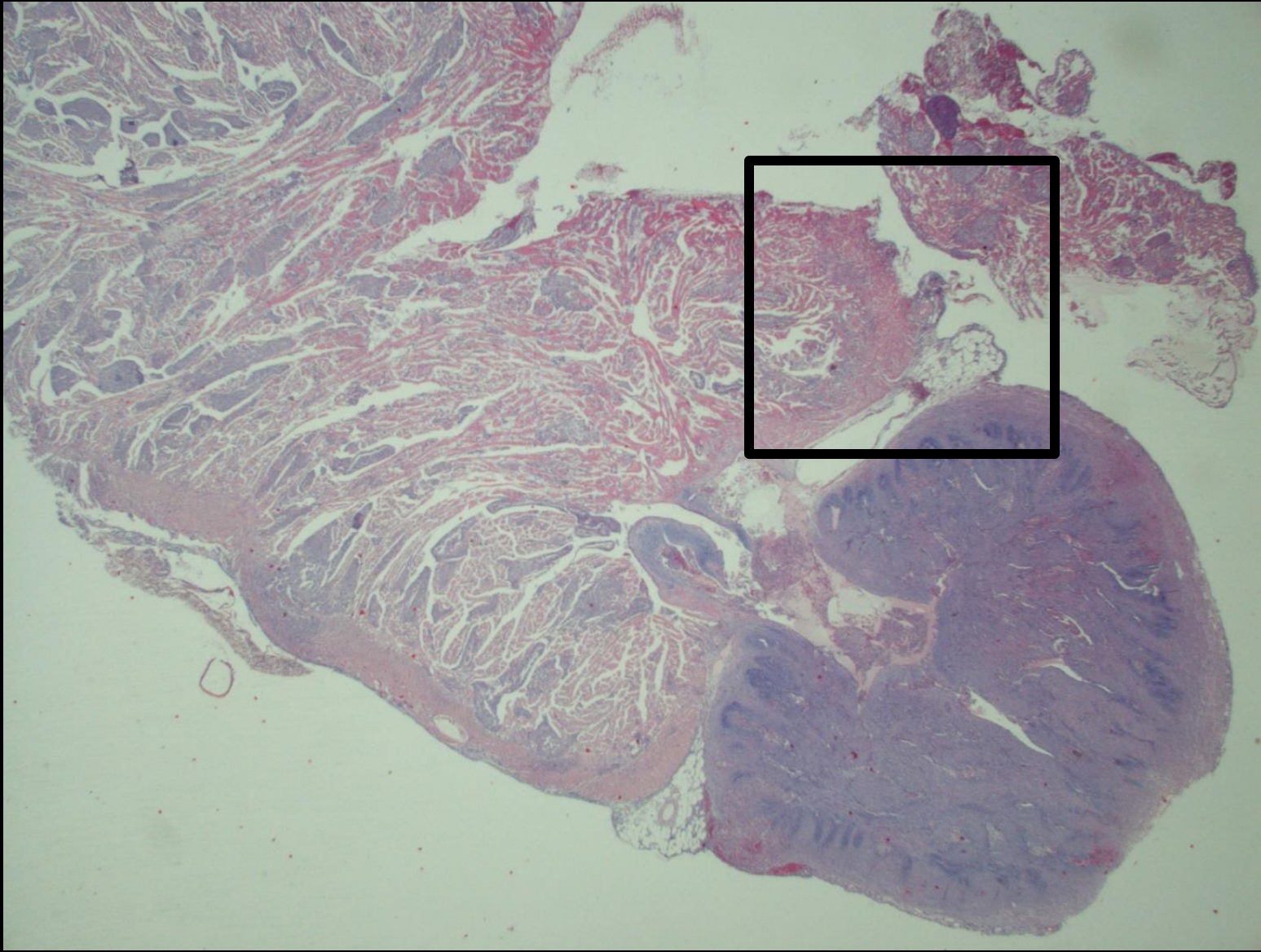
Rainbow trout, fish farm

Clinic: low mortality rates

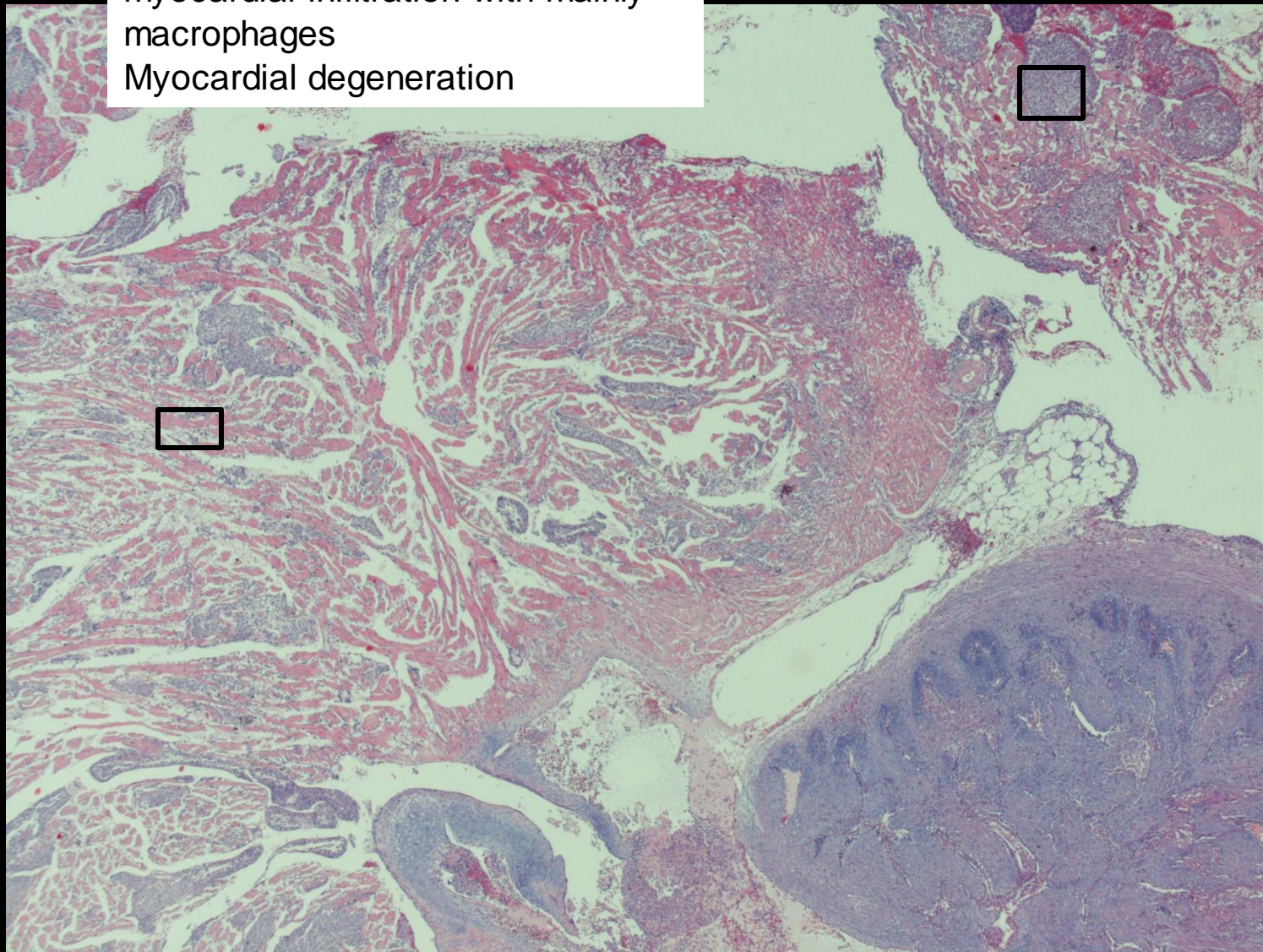
Macroscopy: miliary whitish nodules in liver, kidney and heart, splenomegaly

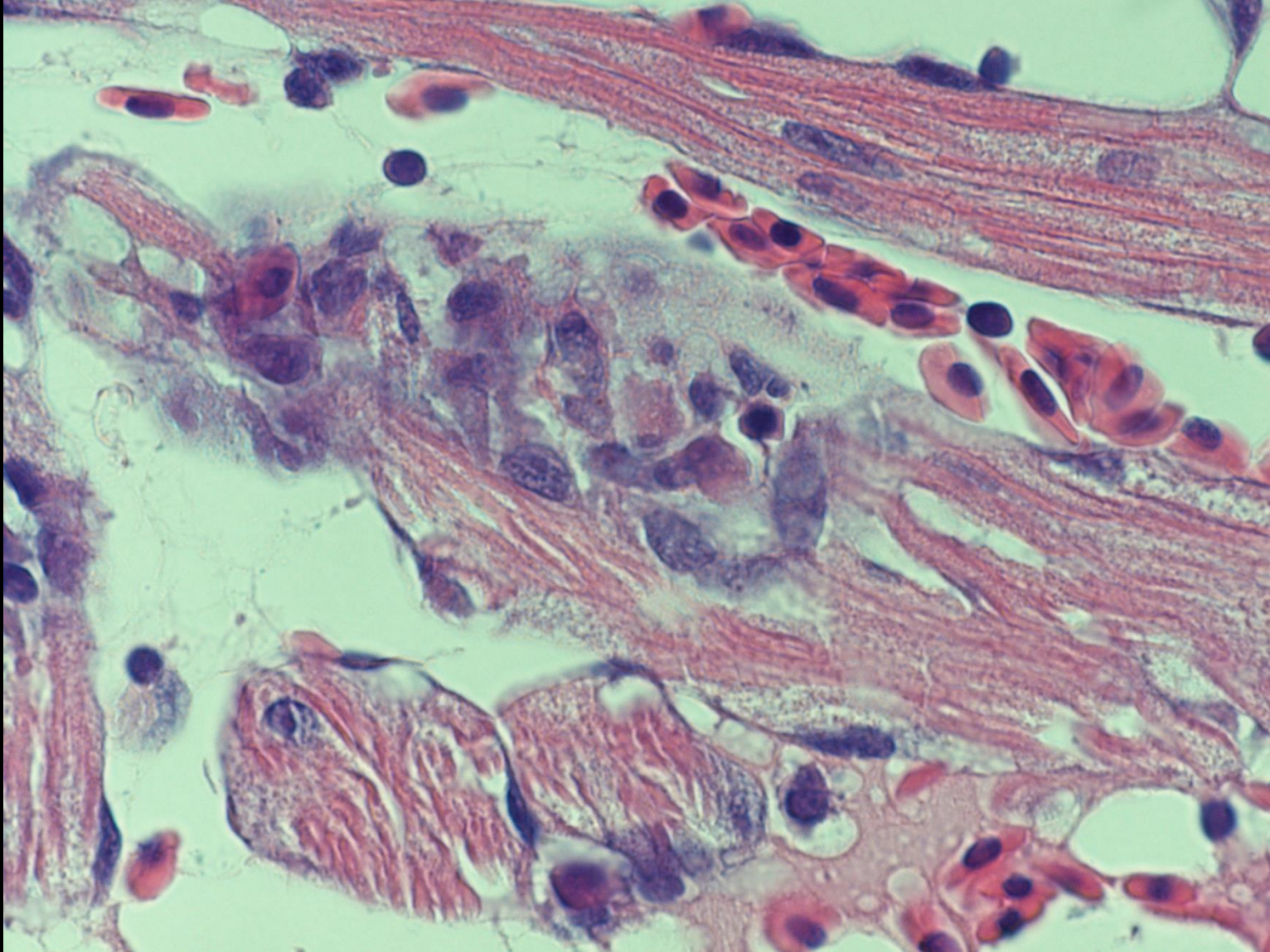
Organs: kidney, heart

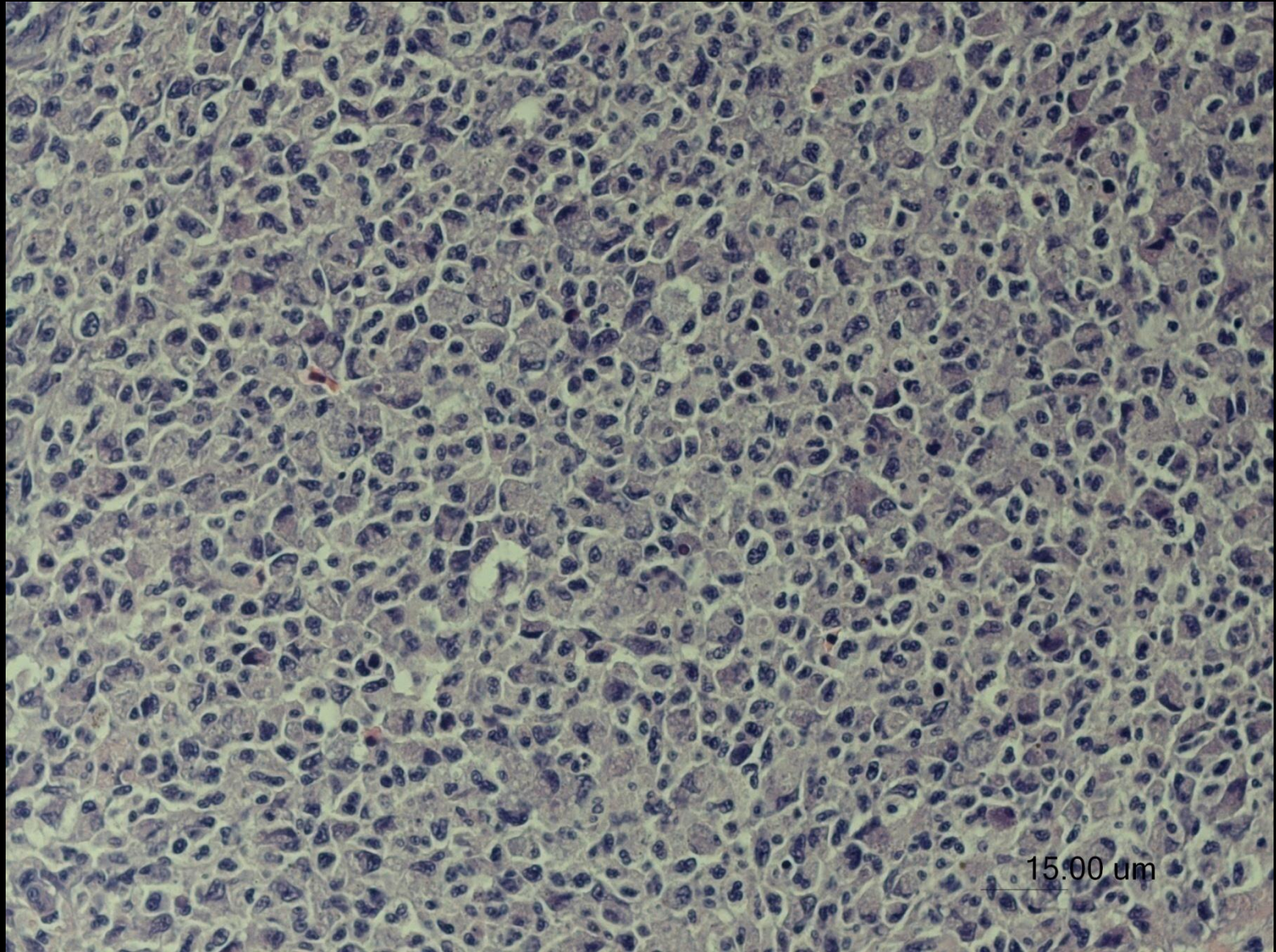




Subendocardial, subepicardial and
myocardial infiltration with mainly
macrophages
Myocardial degeneration

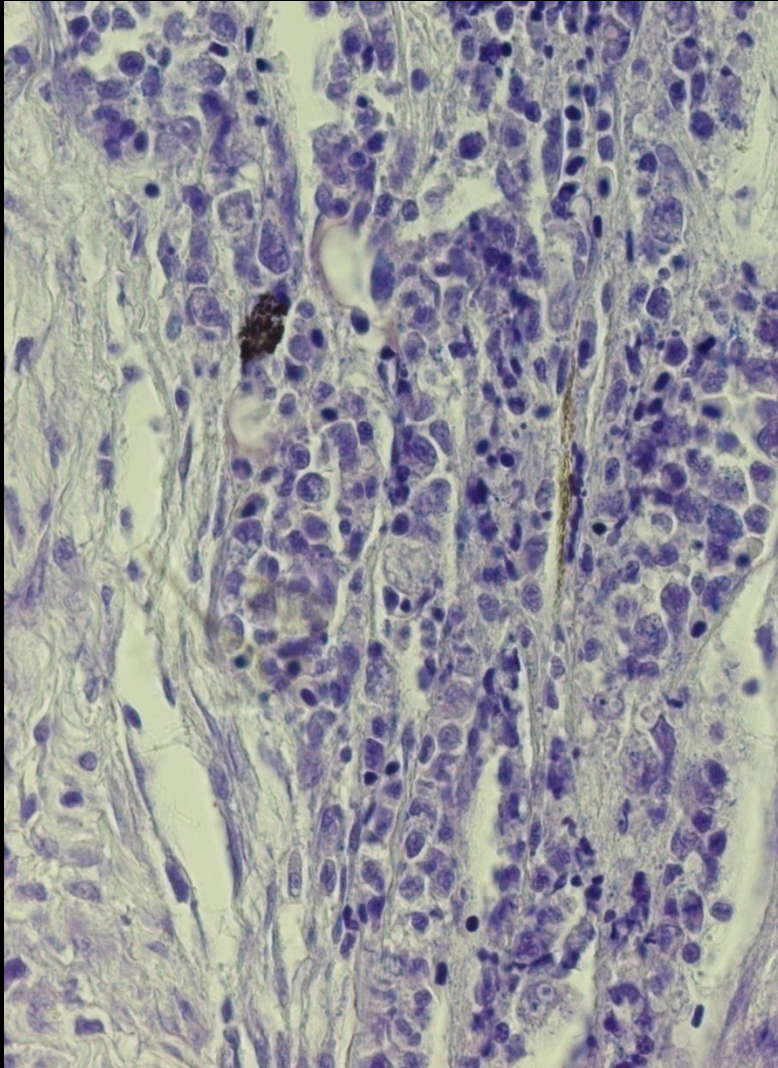




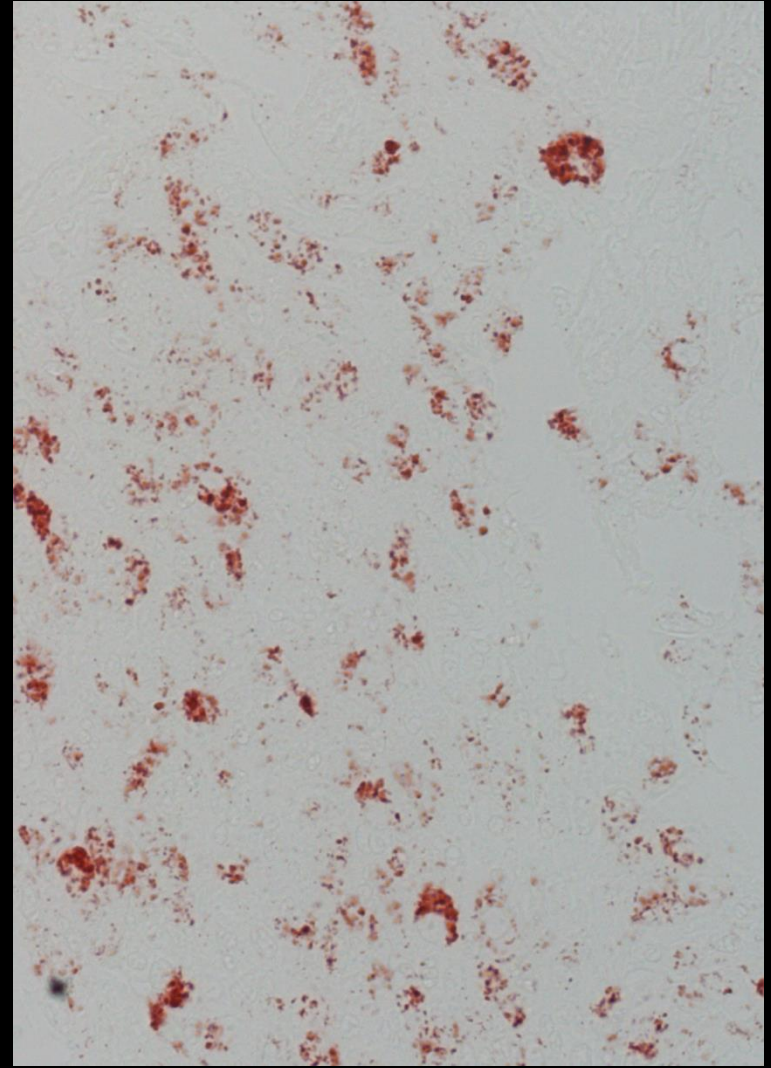


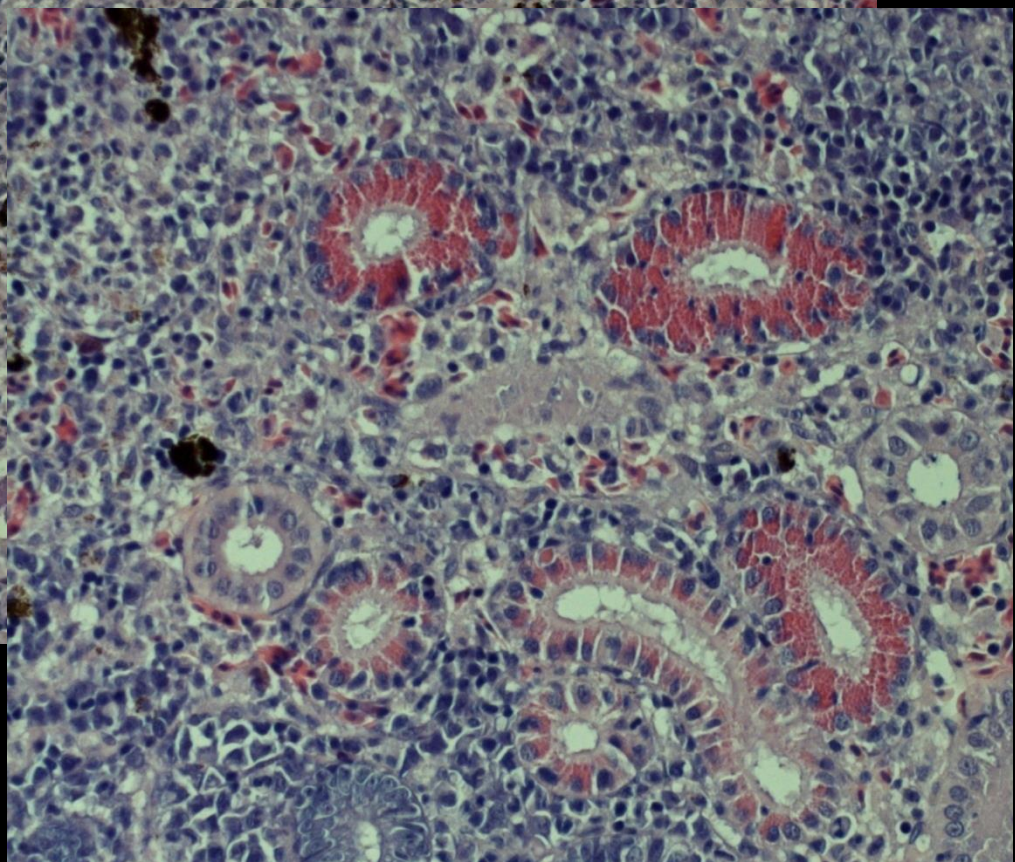
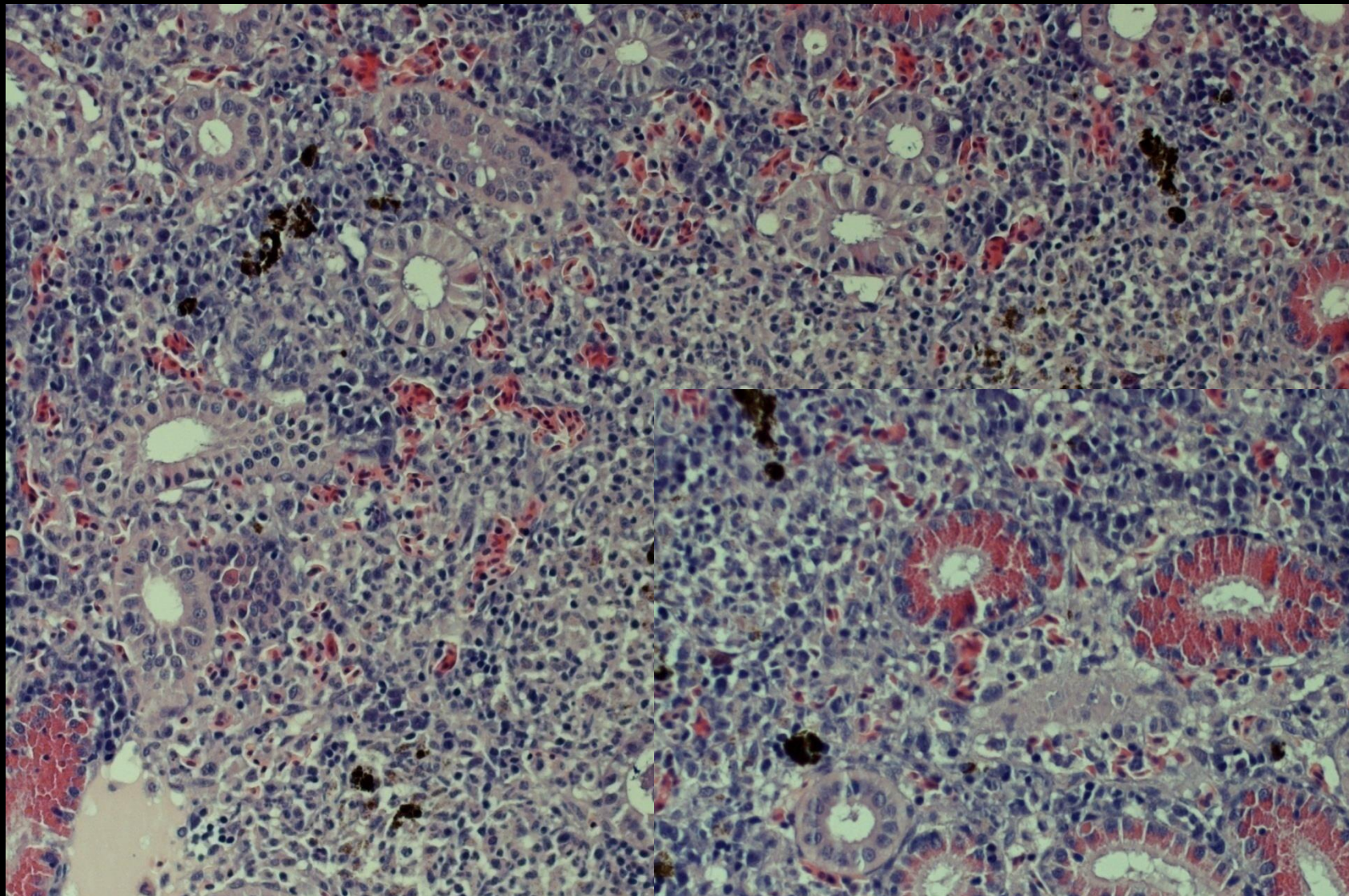
15.00 μm

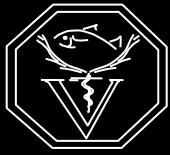
Gram-staining



Immunohistochemistry







Morphological diagnoses

Heart, granulomatous epi-, endo- and myocarditis, multifocal, moderate with intracytoplasmatic bacteria

Kidney, granulomatous nephritis, multifocal, moderate with intracytoplasmatic bacteria

Aetiology

Renibacterium salmoninarum

Bacterial Kidney Disease (BKD)

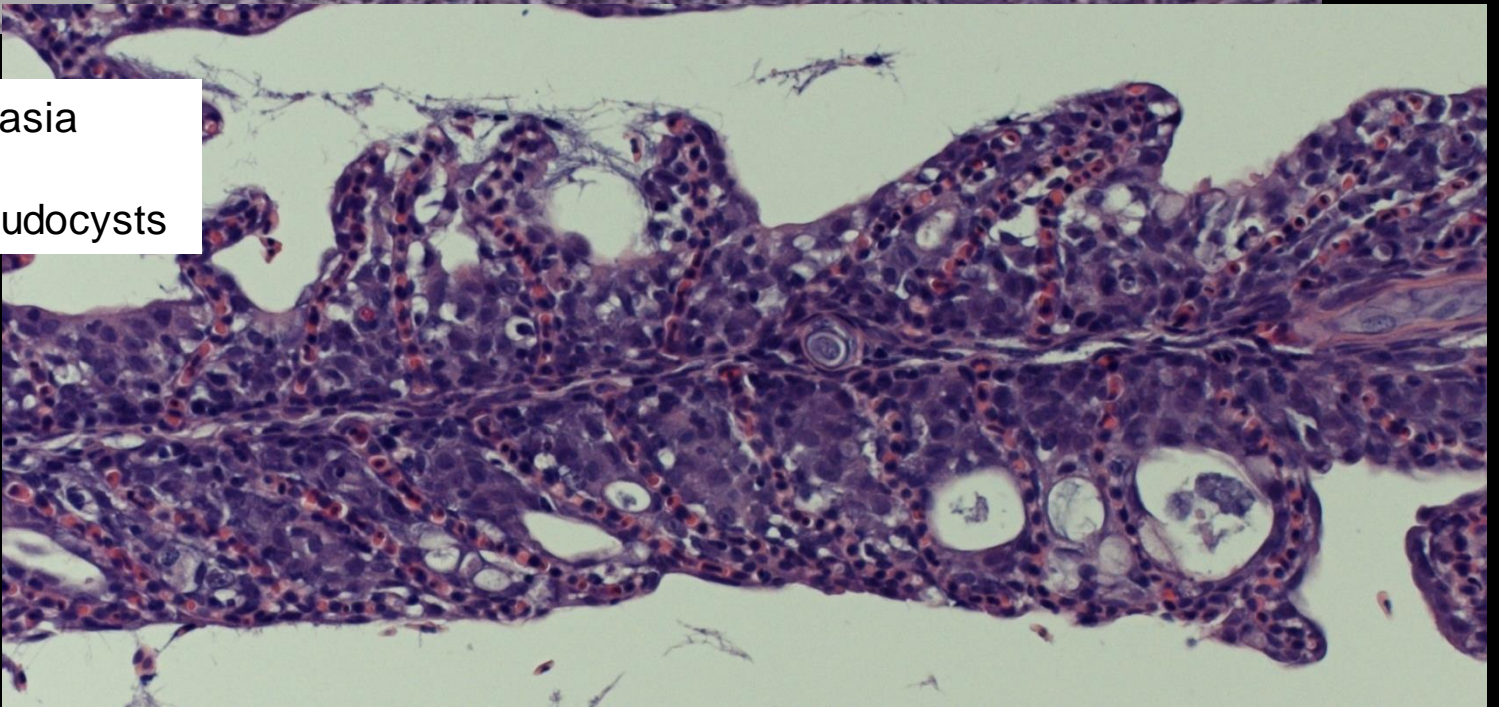
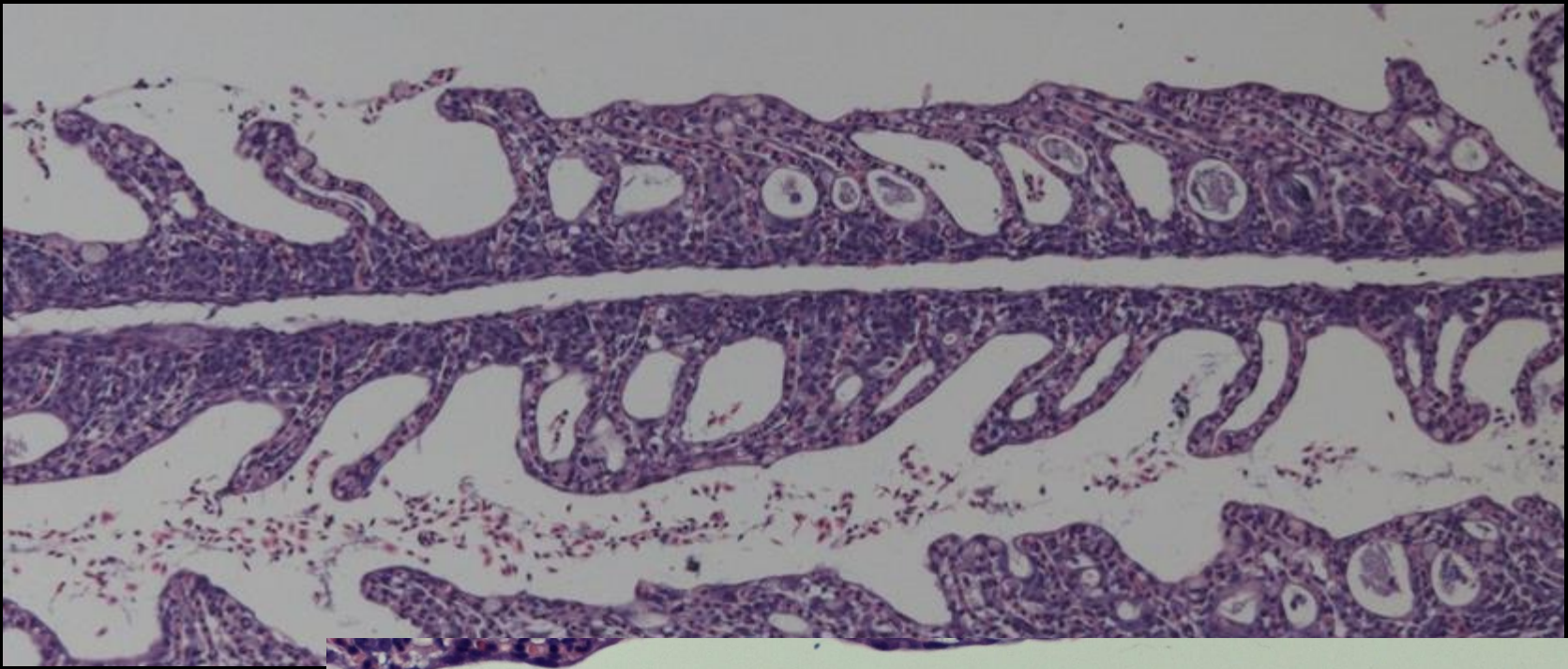
F07/4108 and F05/4000

Rainbow trout, fish farm

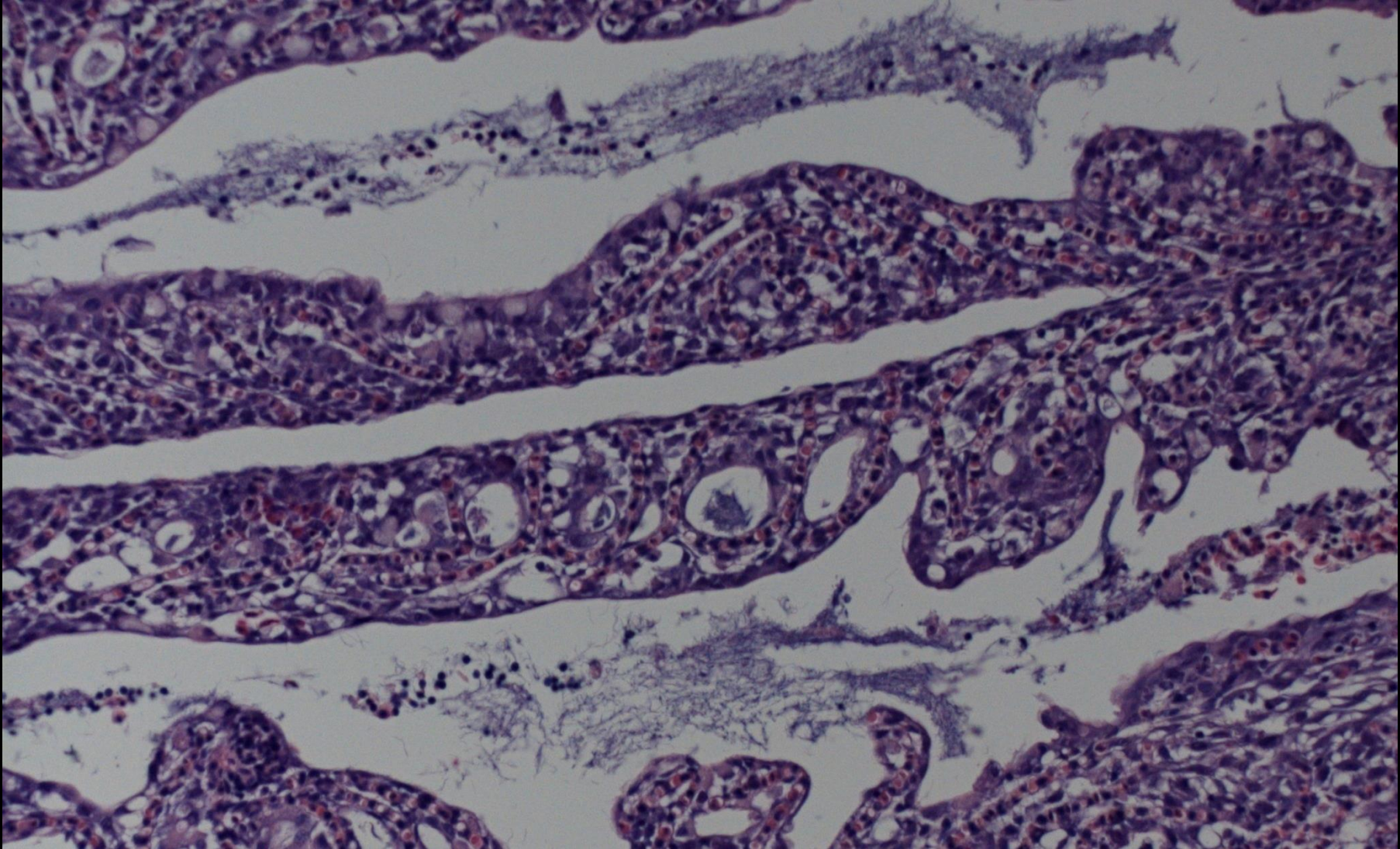
Clinic: increased respiration rate, high mortality

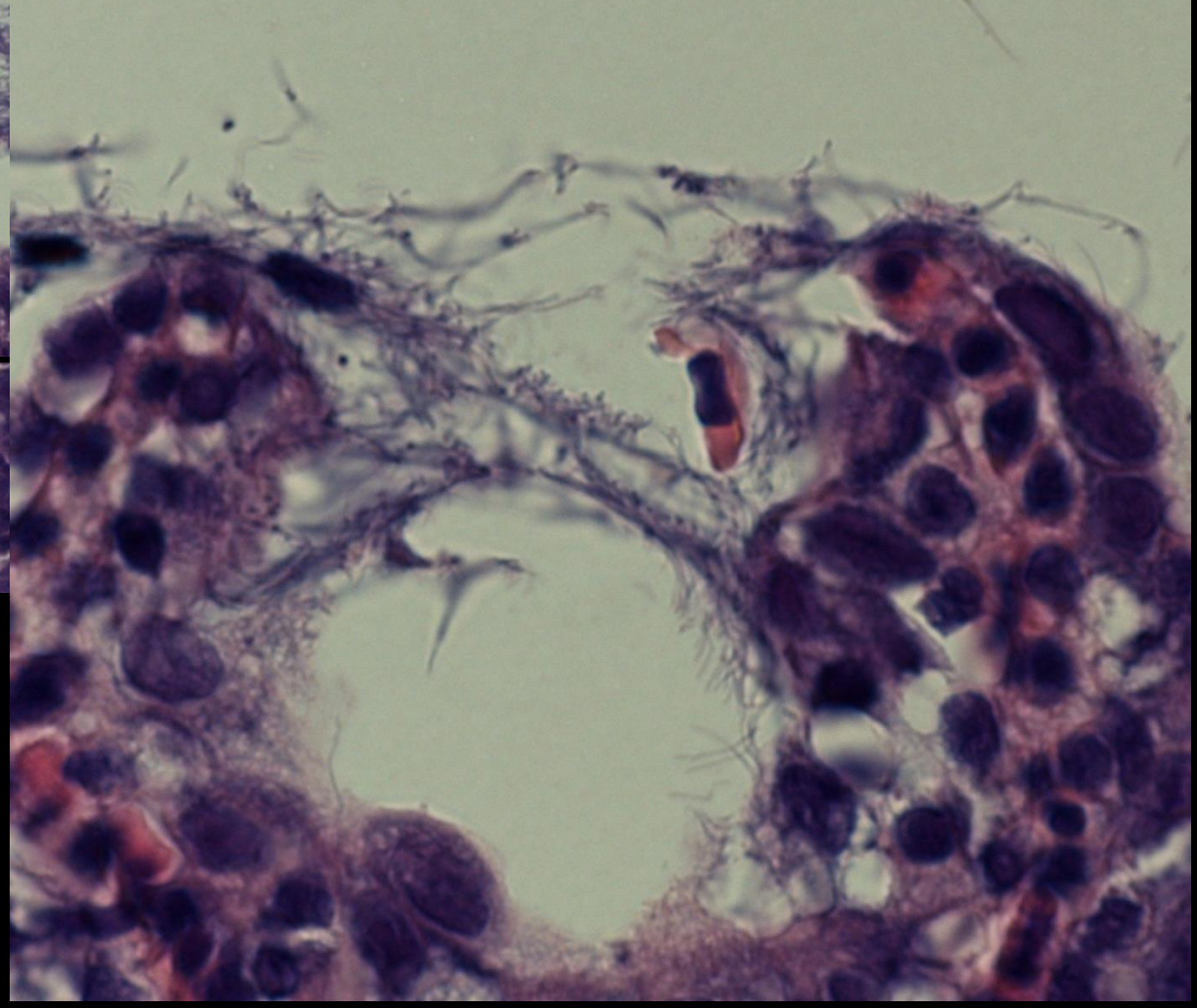
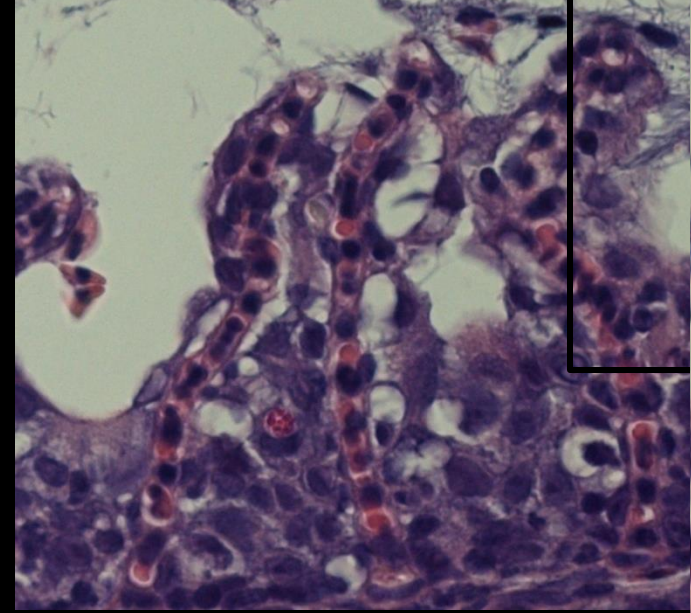
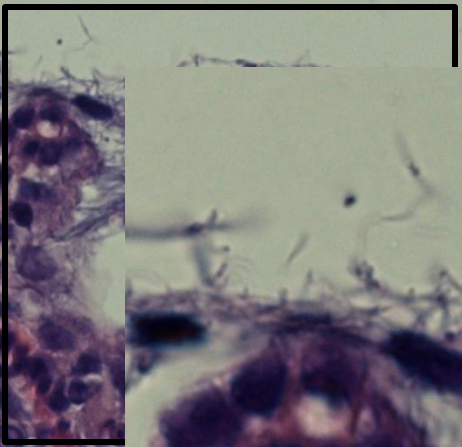
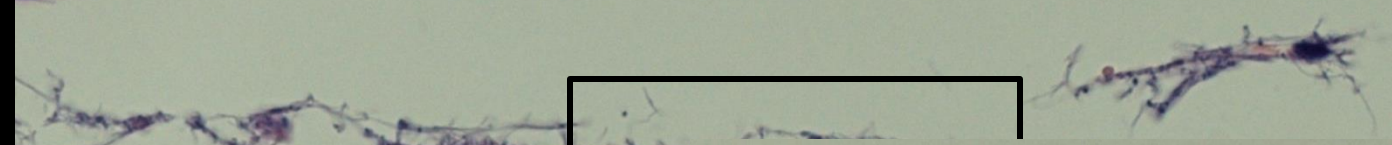
Organ: gills

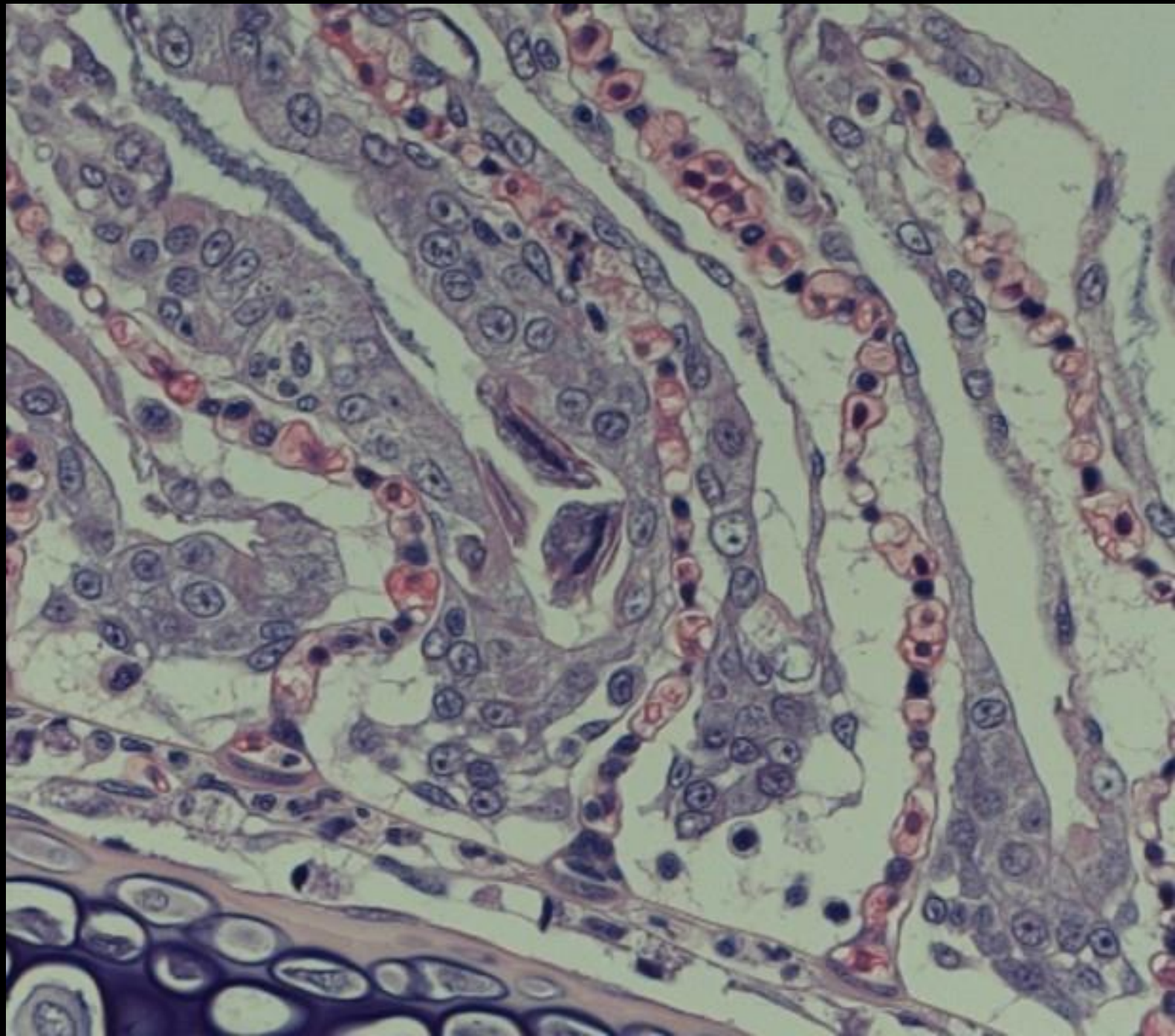


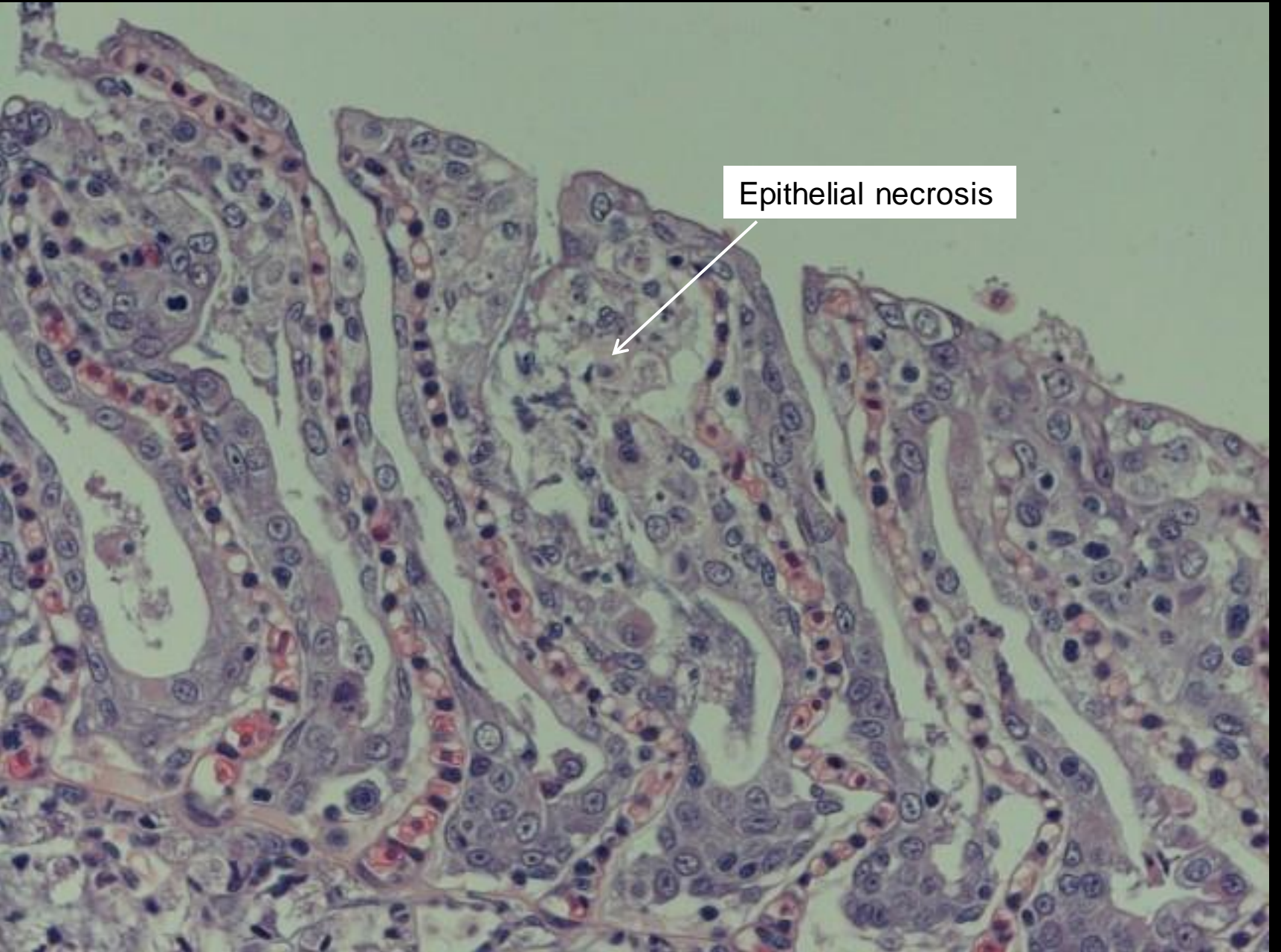


Epithelial hyperplasia
Lamellar fusion
Formation of pseudocysts









Epithelial necrosis



Morphological diagnosis

Gills, proliferative branchitis, multifocal, severe, with filamentous bacteria (and ciliates)

Aetiologies

Flavobacterium branchiophilum
(*Trichodina* sp.)

Bacterial gill disease



F09/1378 and F13/6261

Rainbow trout fry, fish farm

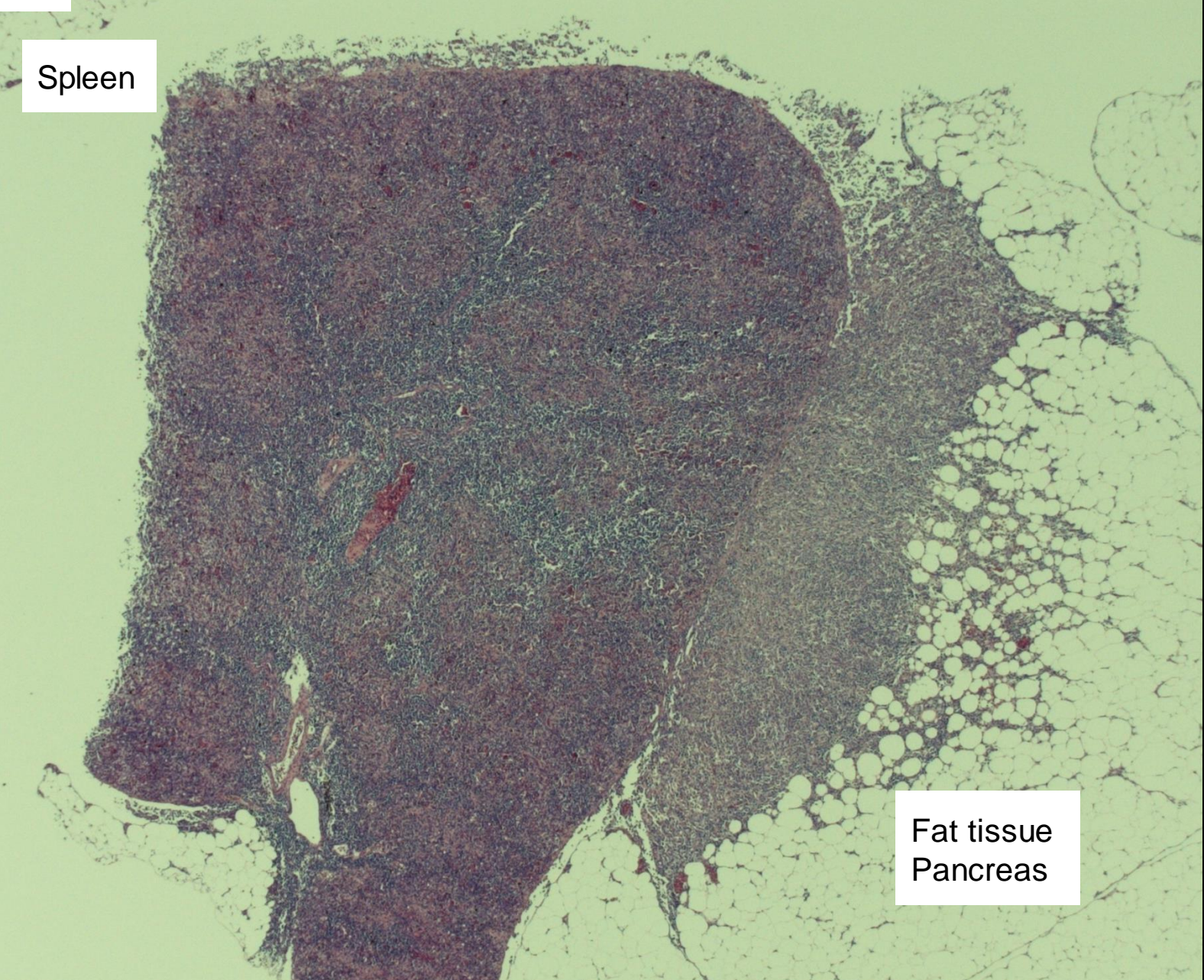
Clinic: high mortality in fry

Organ: spleen



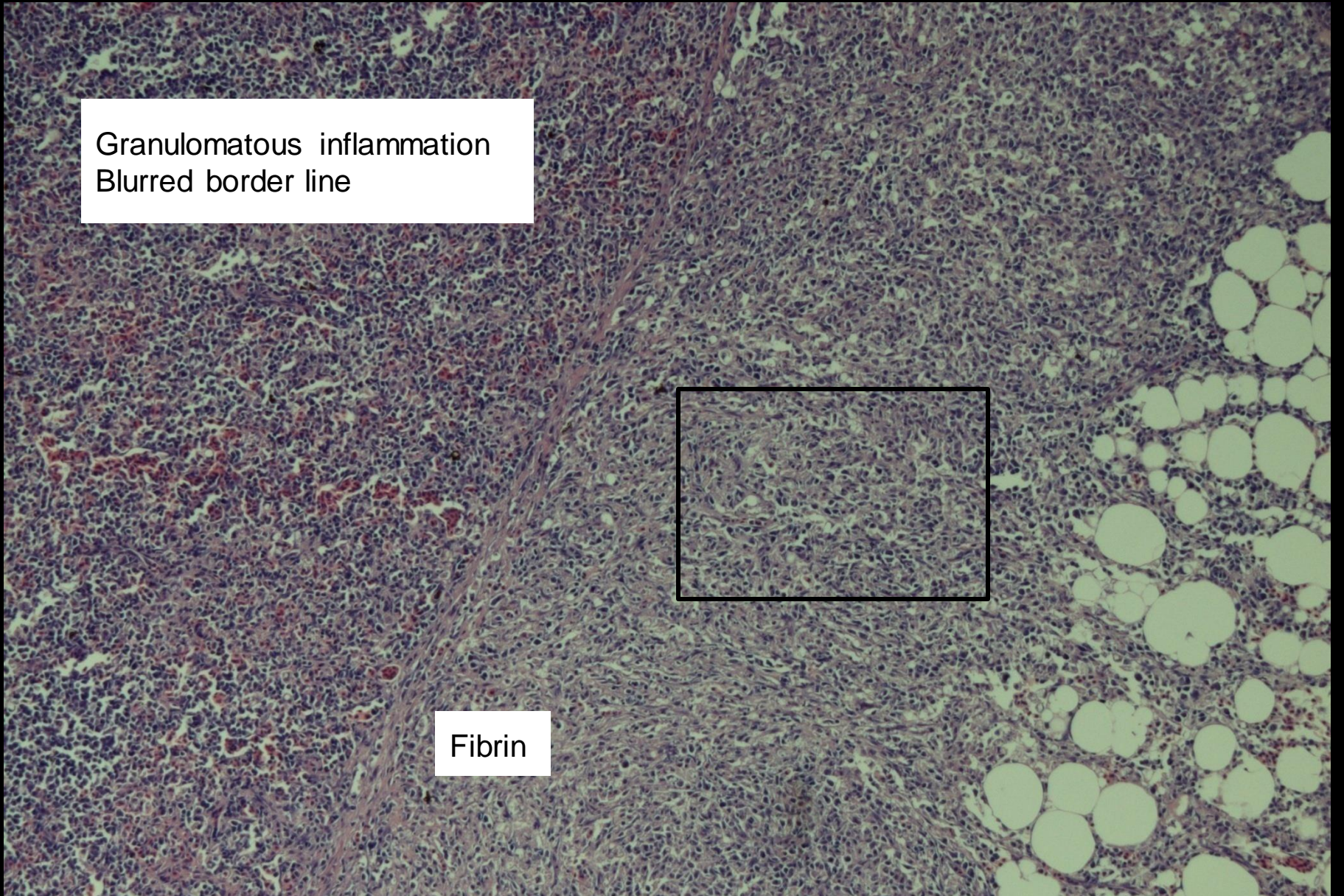
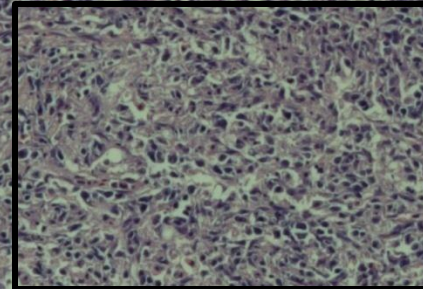
Spleen

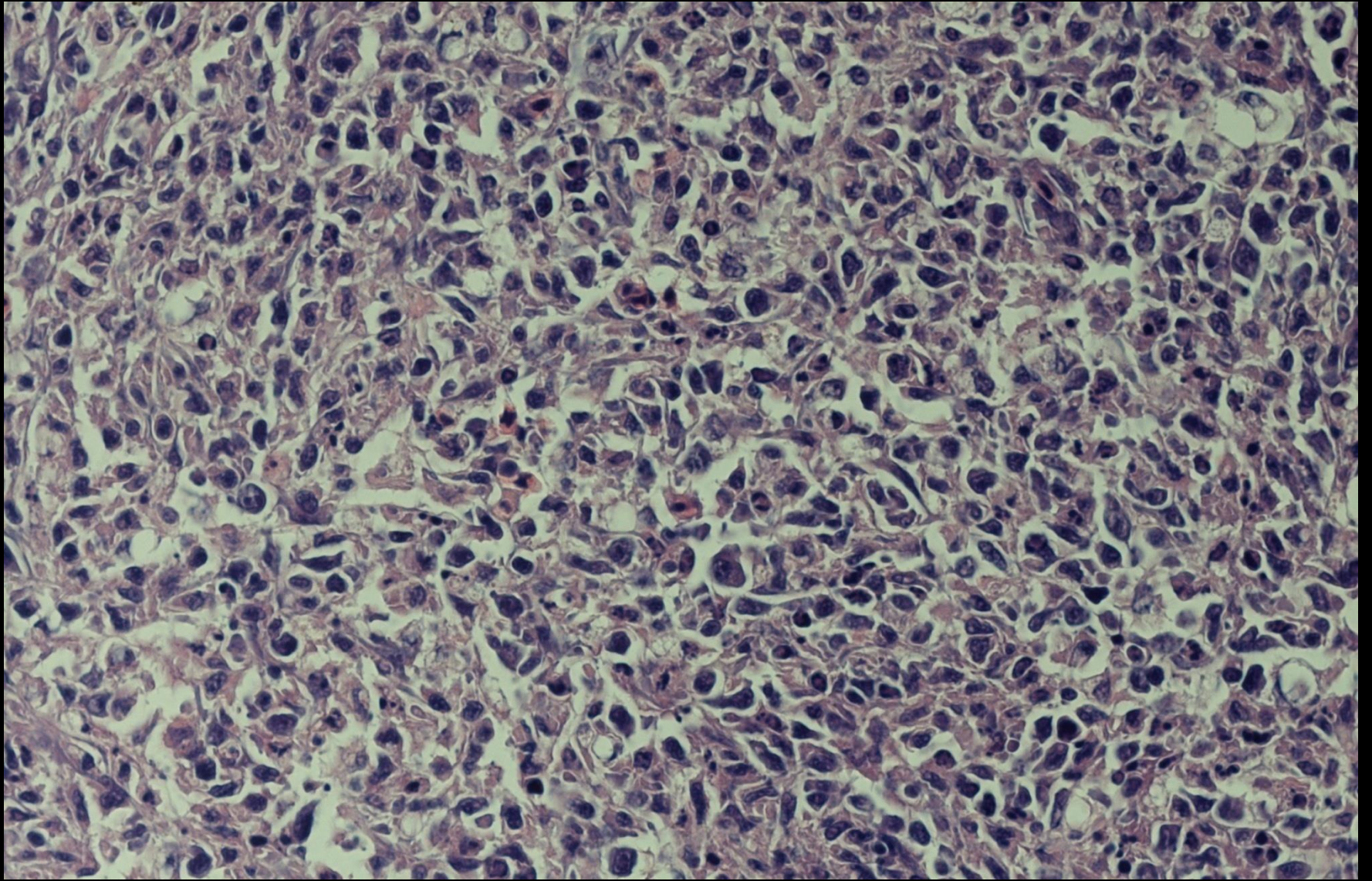
Fat tissue
Pancreas



Granulomatous inflammation
Blurred border line

Fibrin







Morphological diagnoses

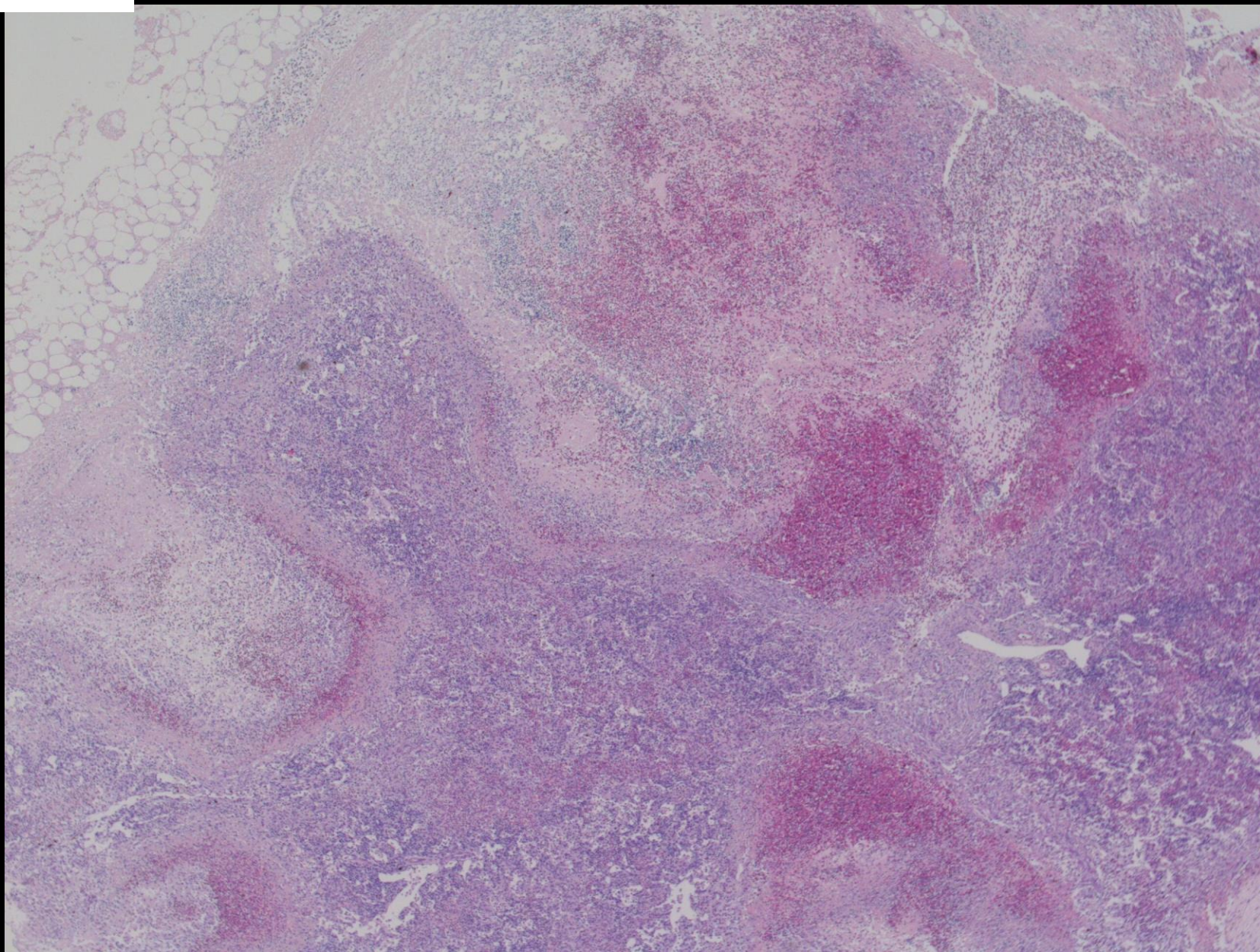
Spleen, granulomatous splenitis, multifocal to coalescing, severe
Pancreas, fat tissue, granulomatous steatitis and pancreatitis, multifocal
to coalescing, moderate

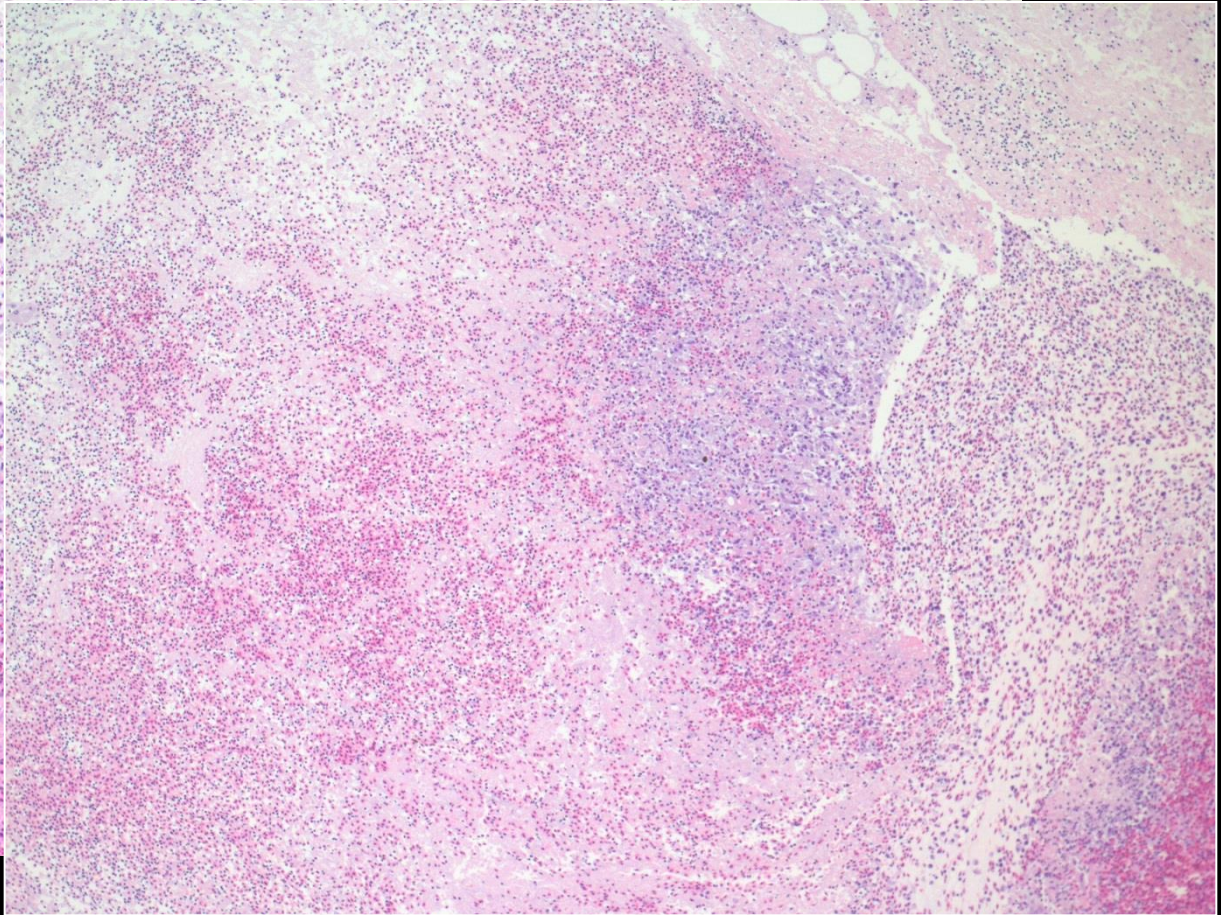
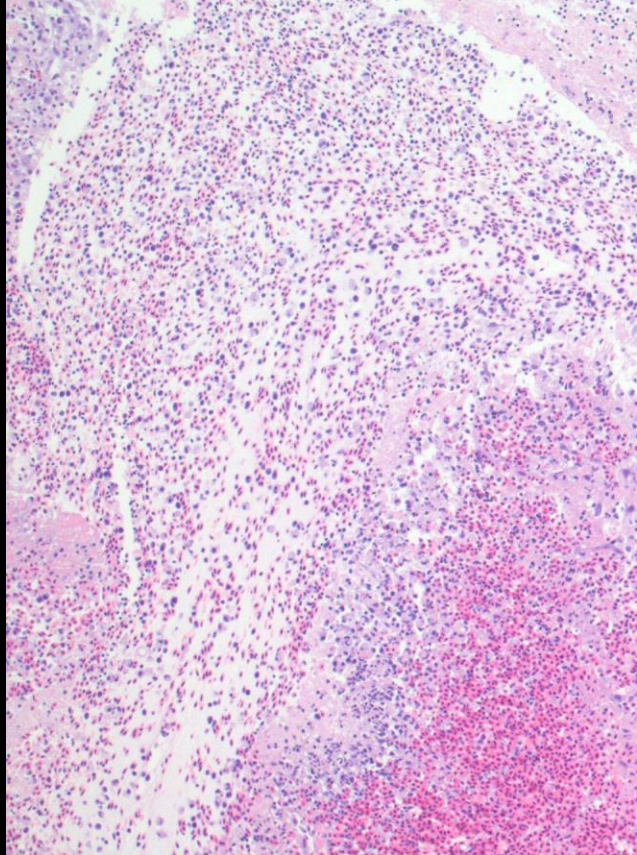
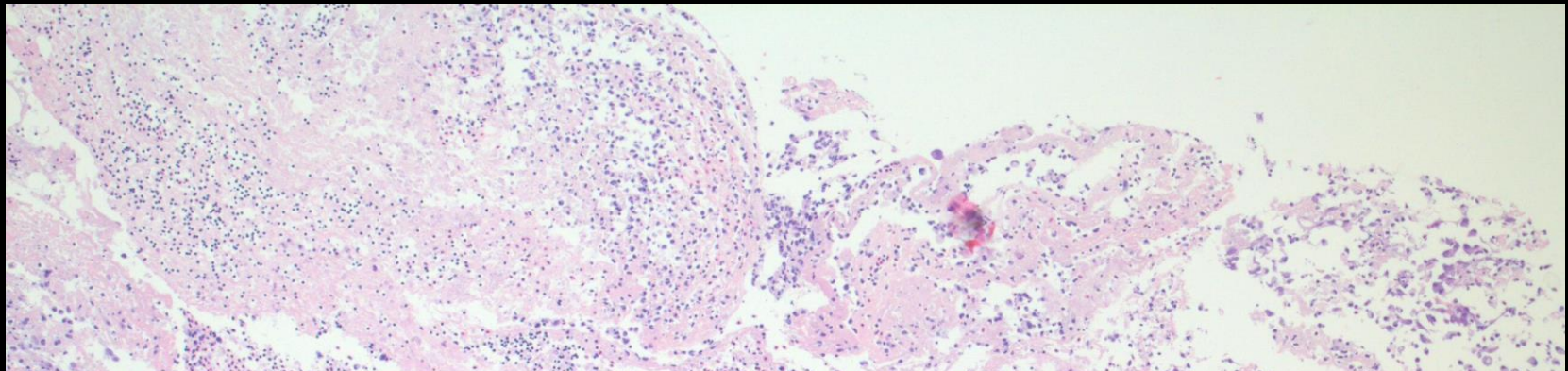
Aetiology

Flavobacterium psychrophilum

Rainbow trout fry syndrome

F13/6261







Morphological diagnoses

Spleen, necrotising and haemorrhagic splenitis, diffuse, severe

Aetiology

Flavobacterium psychrophilum

Rainbow trout fry syndrome



F06/491

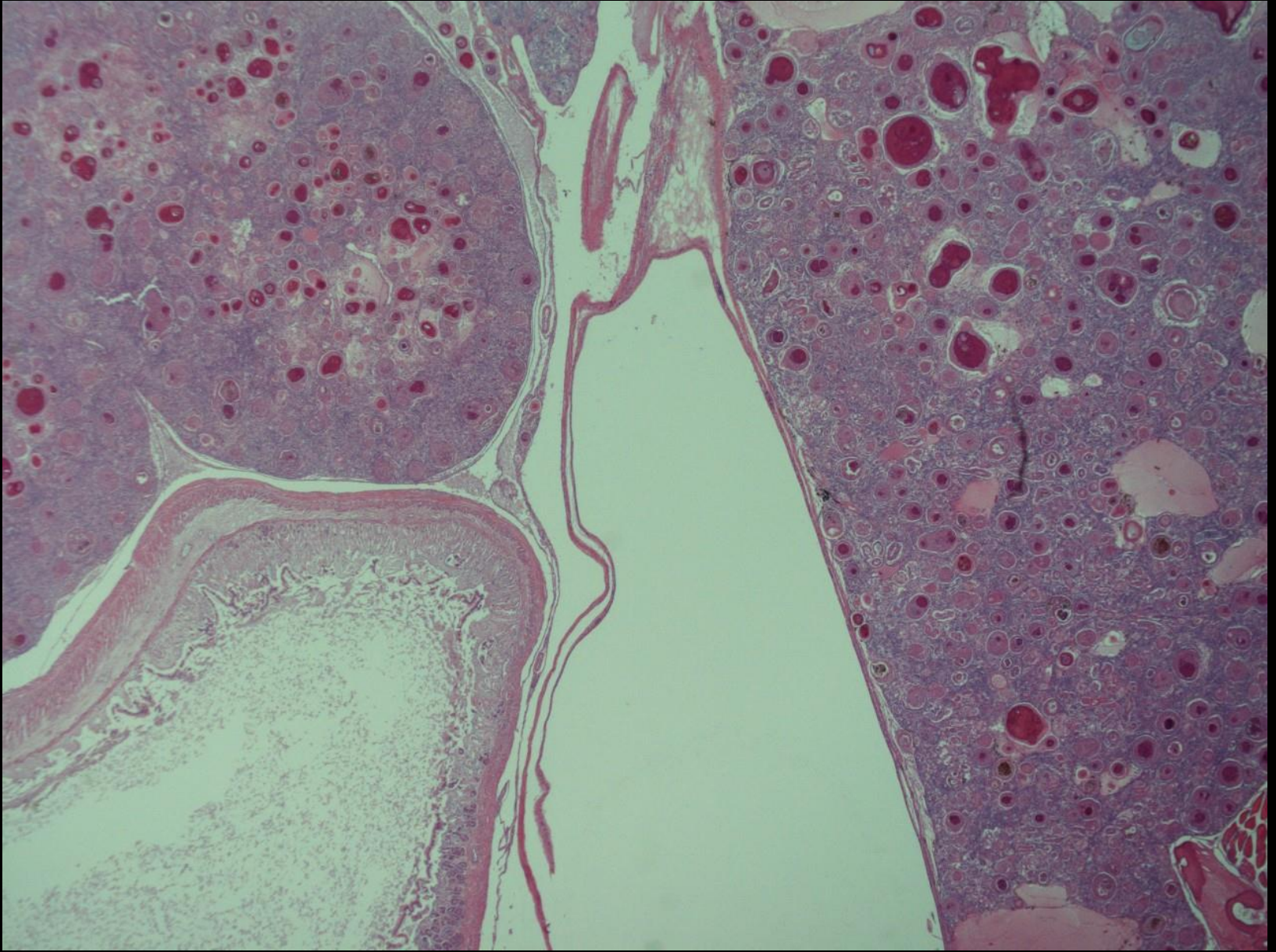
Ornamental fish, freshwater aquaria

Clinic: chronic course, low mortality, apathy, cachexia, deformed spine

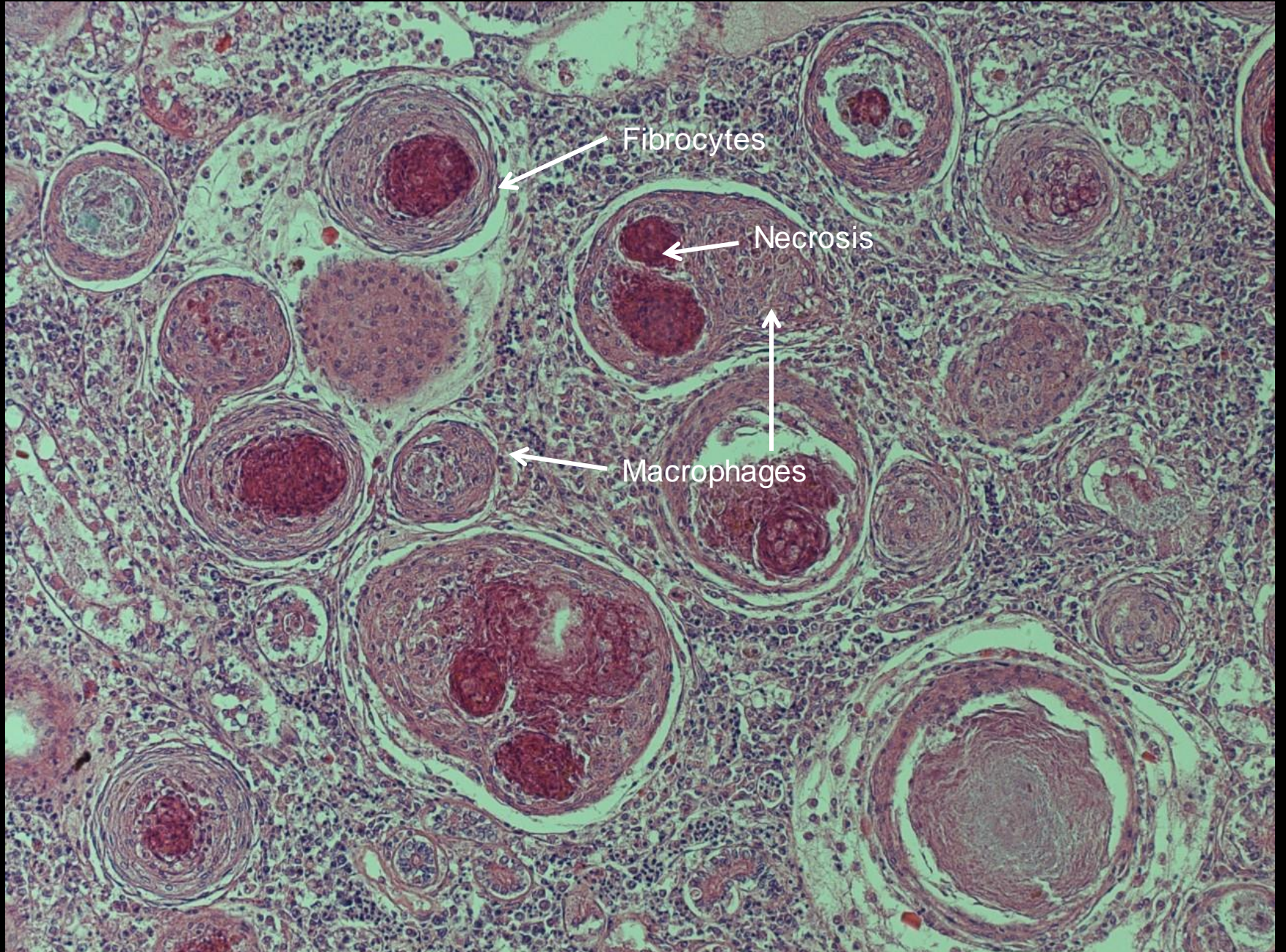
Organ: cross section through several organs

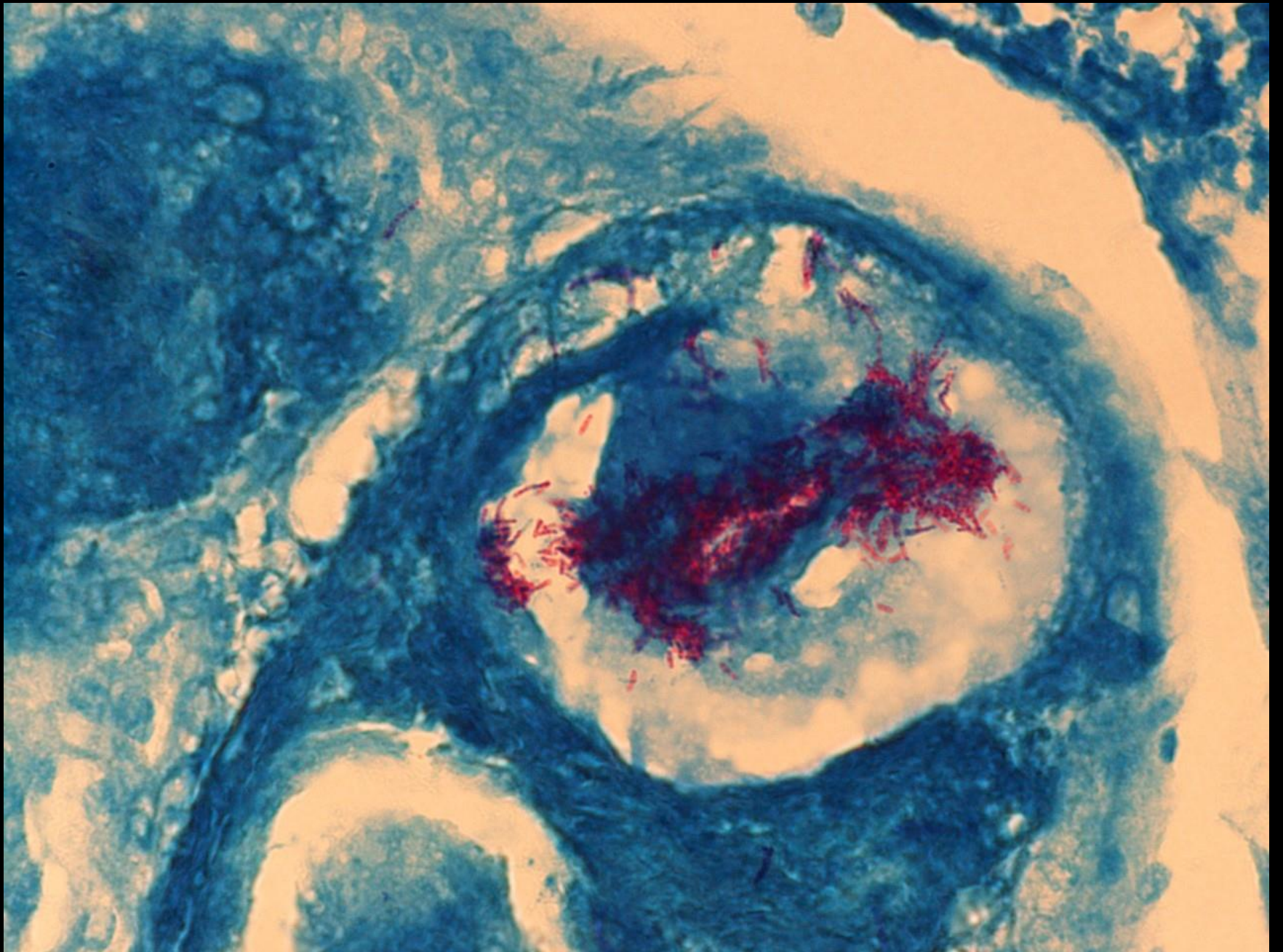


Kidney and spleen



Kidney







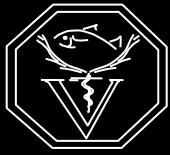
Morphological diagnosis

Liver, kidney, spleen, intestine, peritoneum, eye, granulomatous hepatitis,, multifocal, severe

Aetiology

Mycobacterium sp.

Fish Tuberculosis



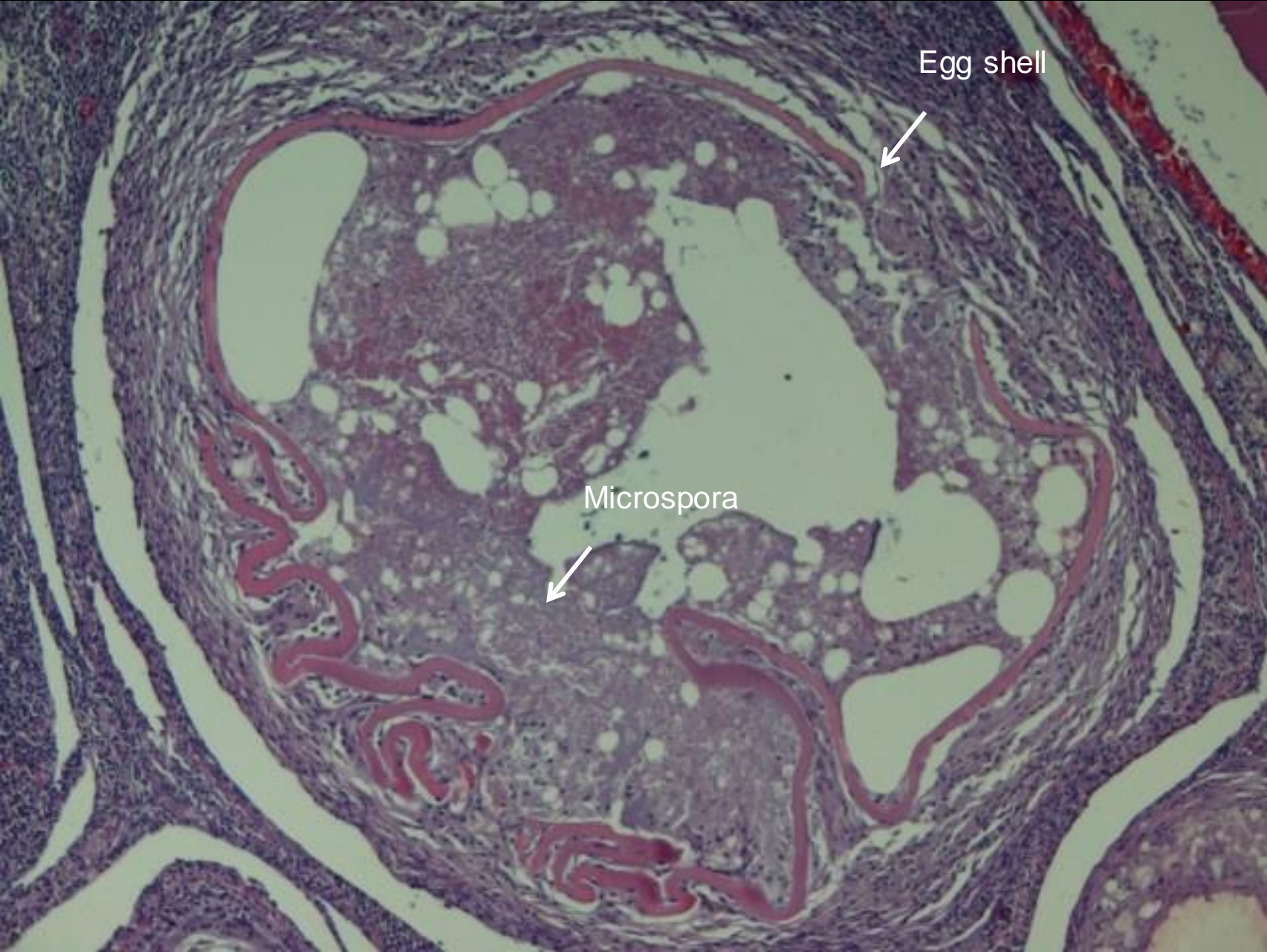
R03/1226

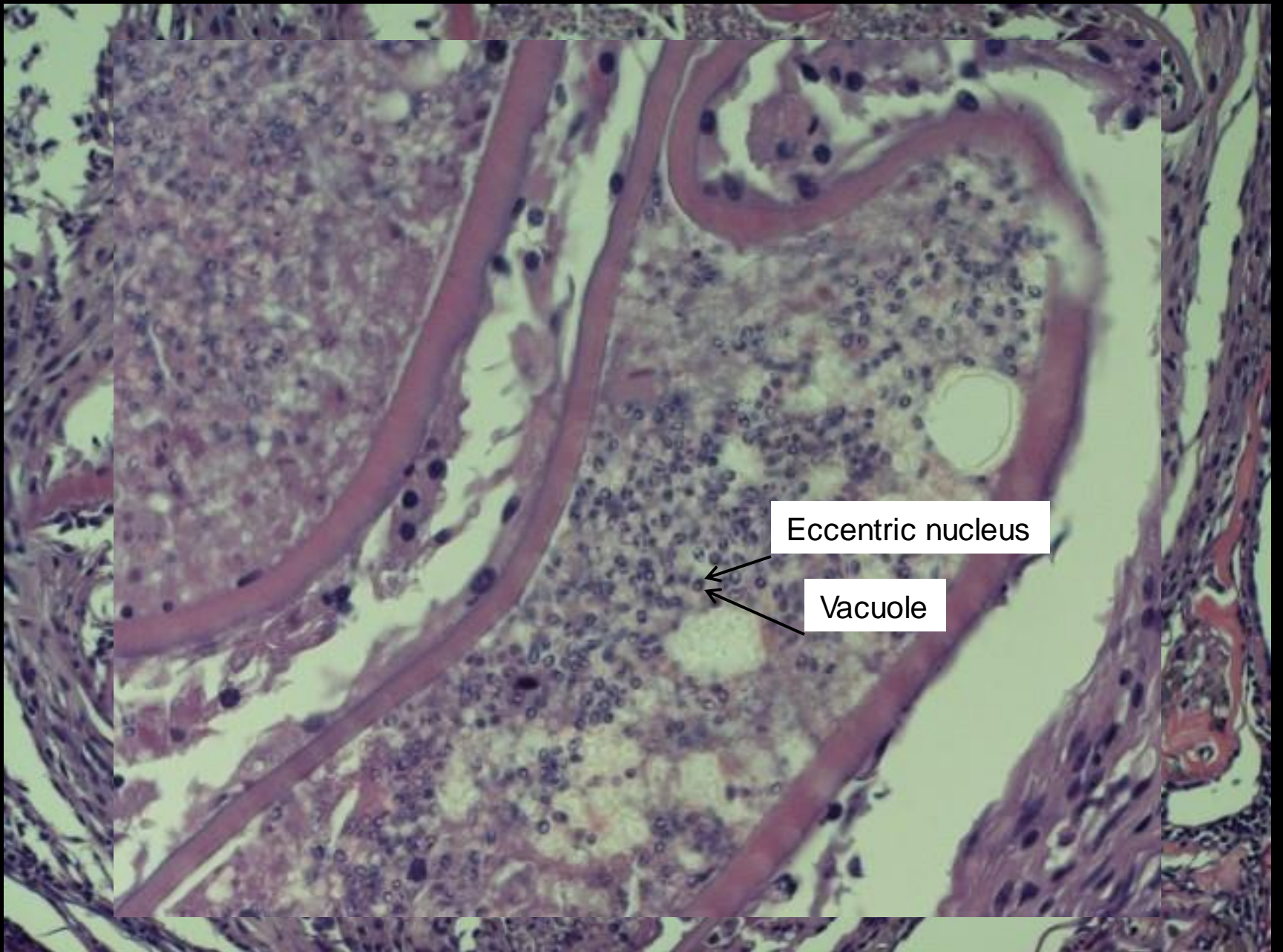
Feral brown trout

No clinical symptoms

Organ: ovary

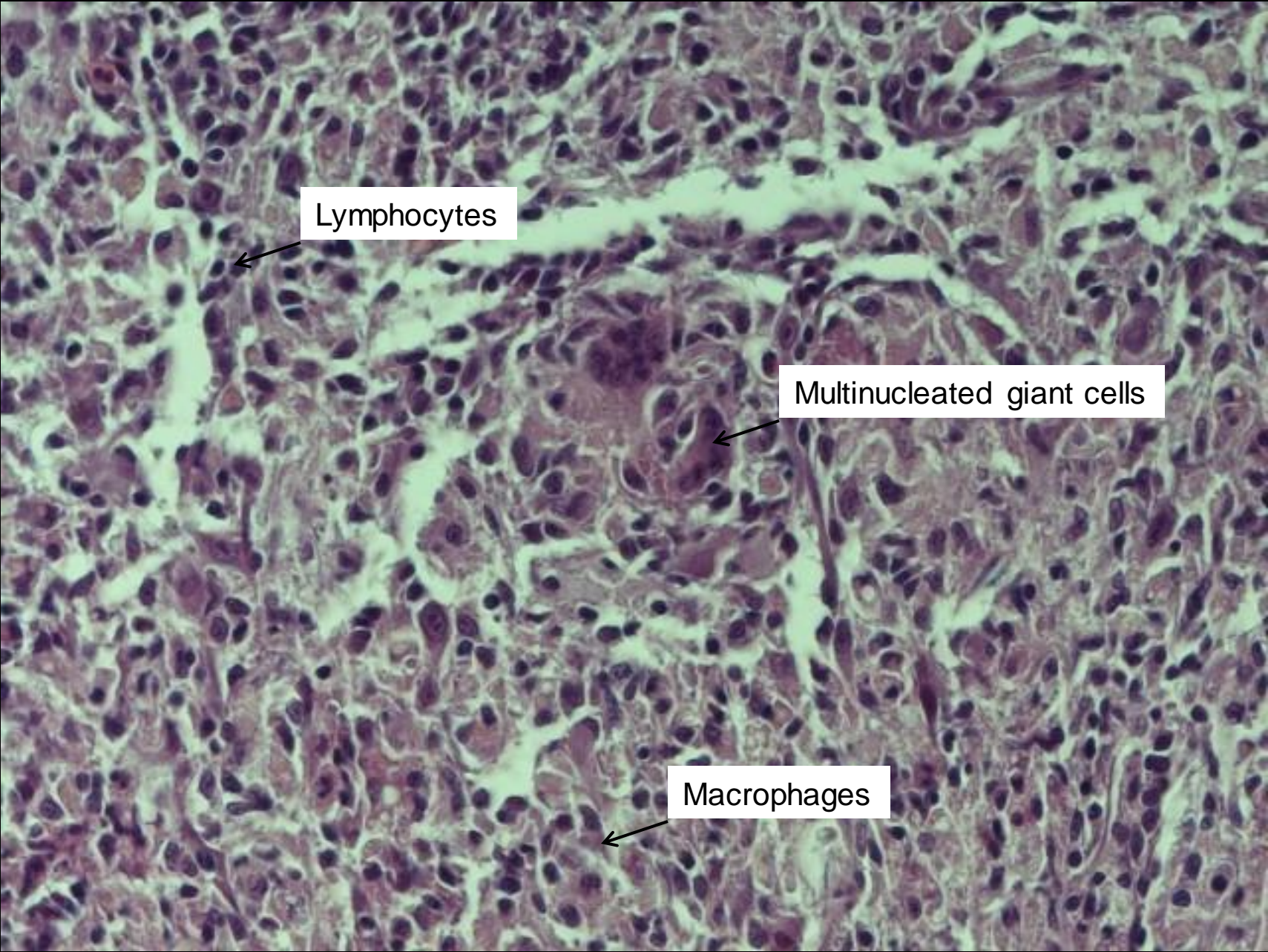






Eccentric nucleus

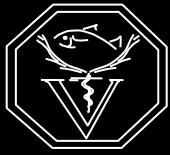
Vacuole



Lymphocytes

Multinucleated giant cells

Macrophages



Morphological diagnosis

Ovary, granulomatous oophoritis, multifocal, severe with intracellular microsporidia

Aetiology

Microspora salmonis

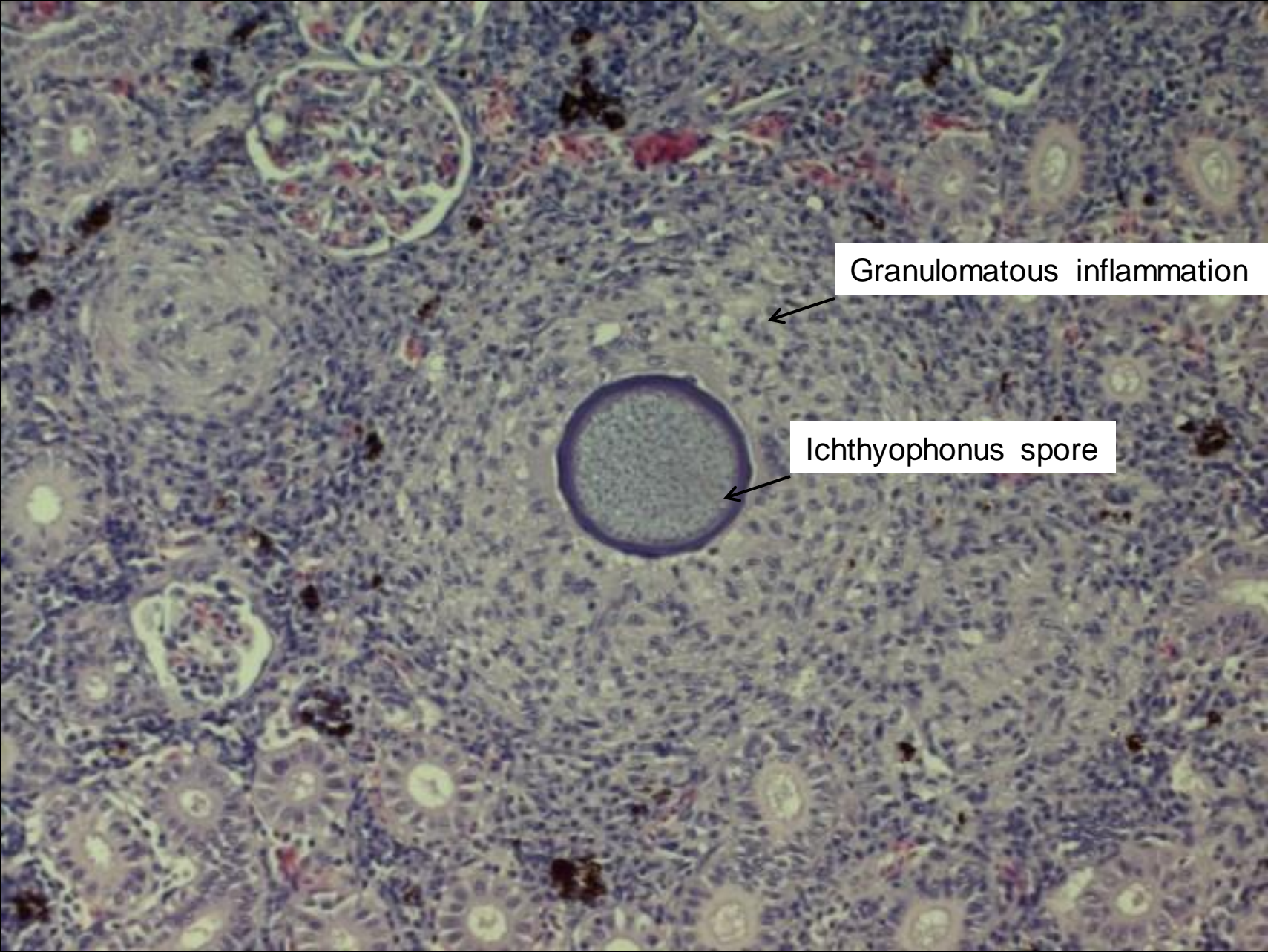


R01/751

Rainbow trout, fish farm, natural environment

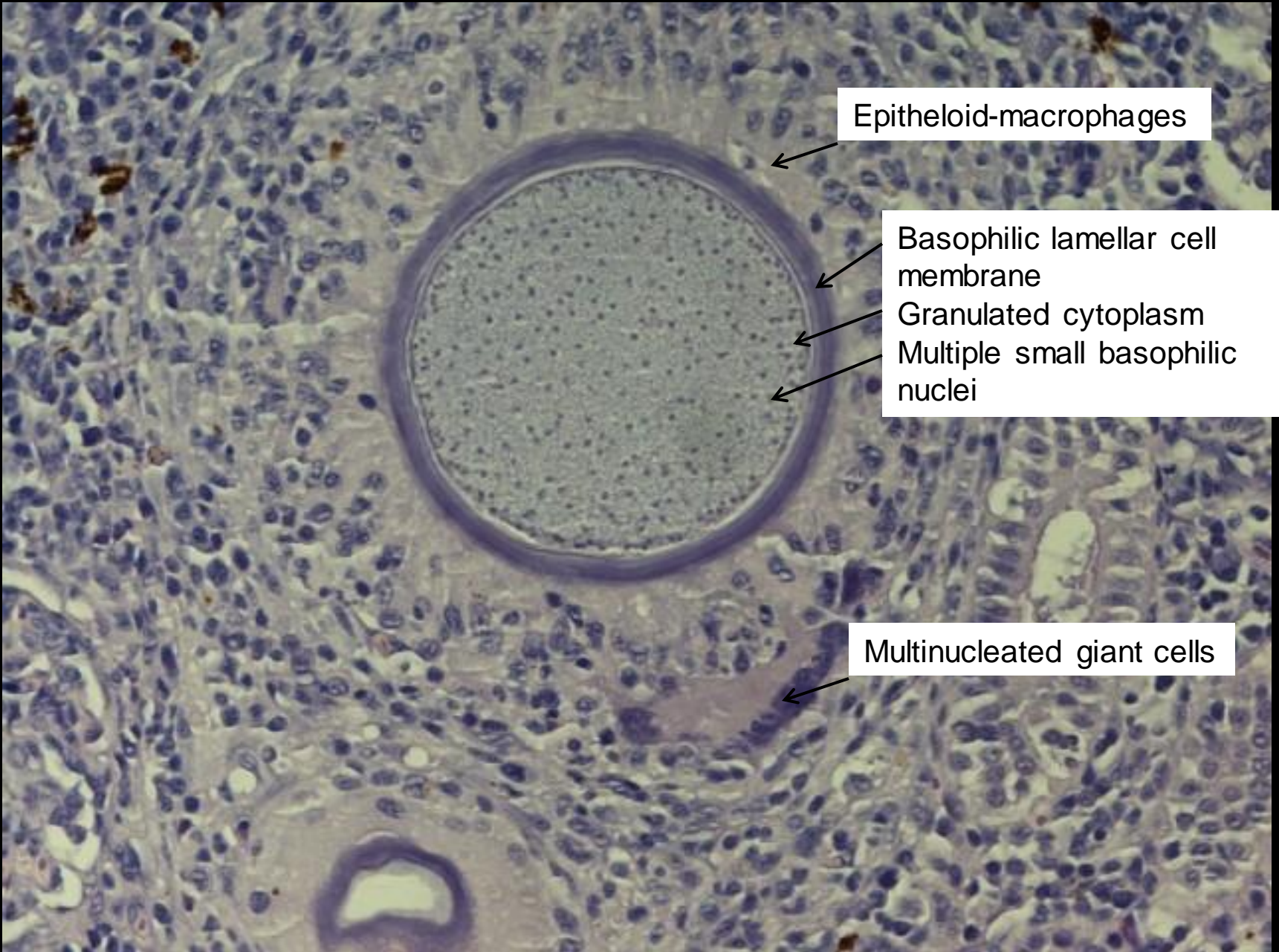
Organ: kidney





Granulomatous inflammation

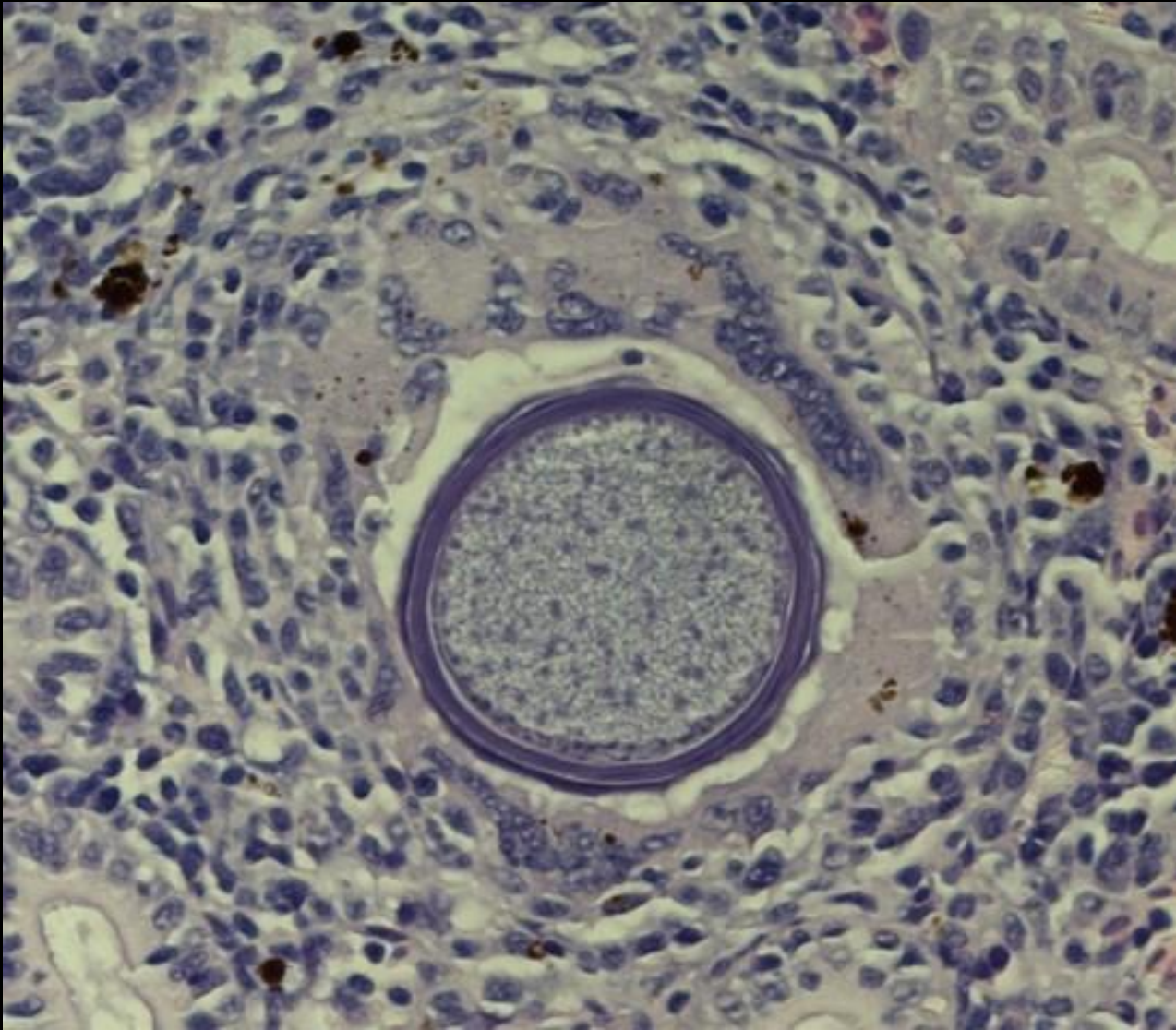
Ichthyophonus spore

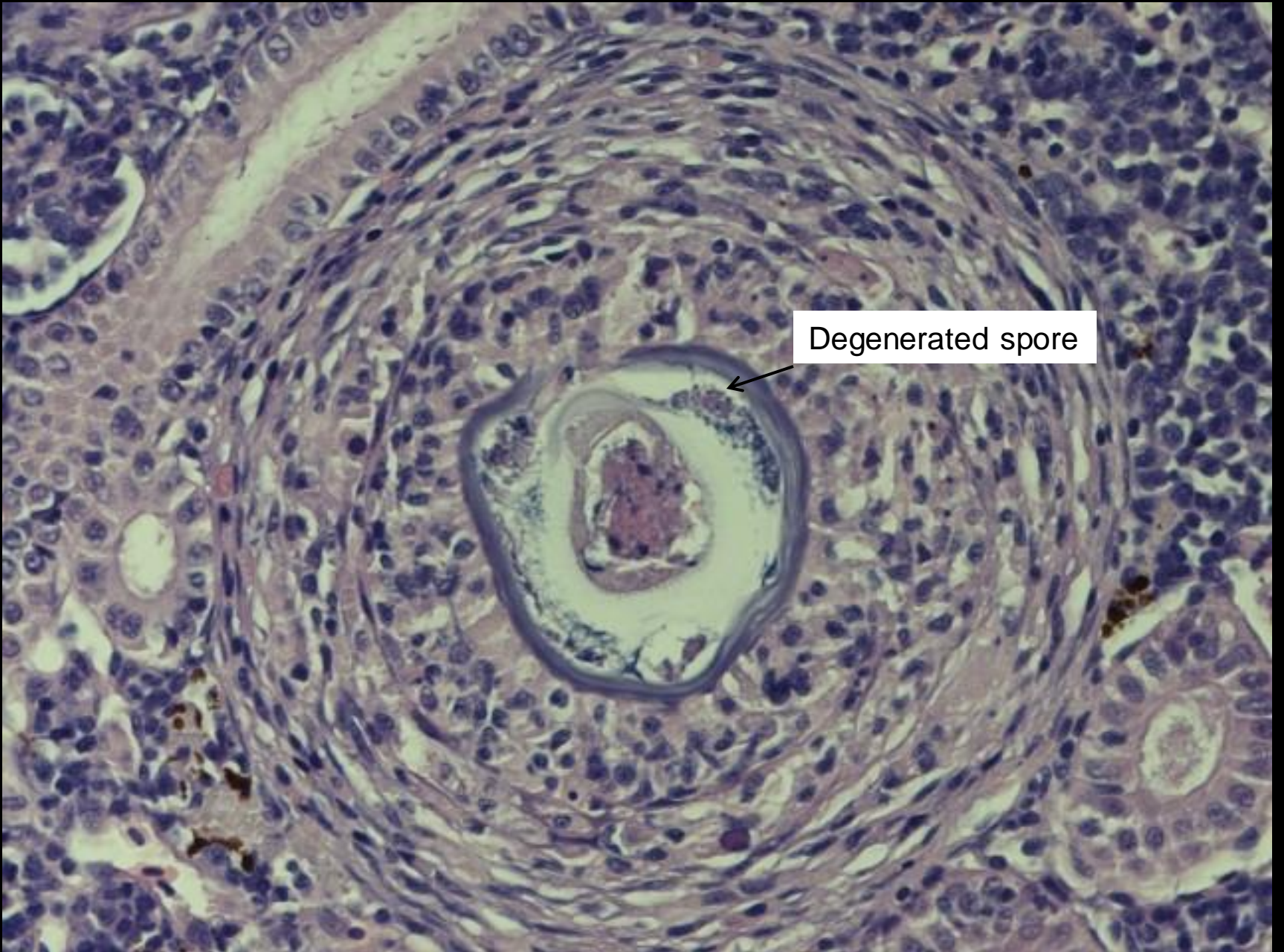


Epithelioid-macrophages

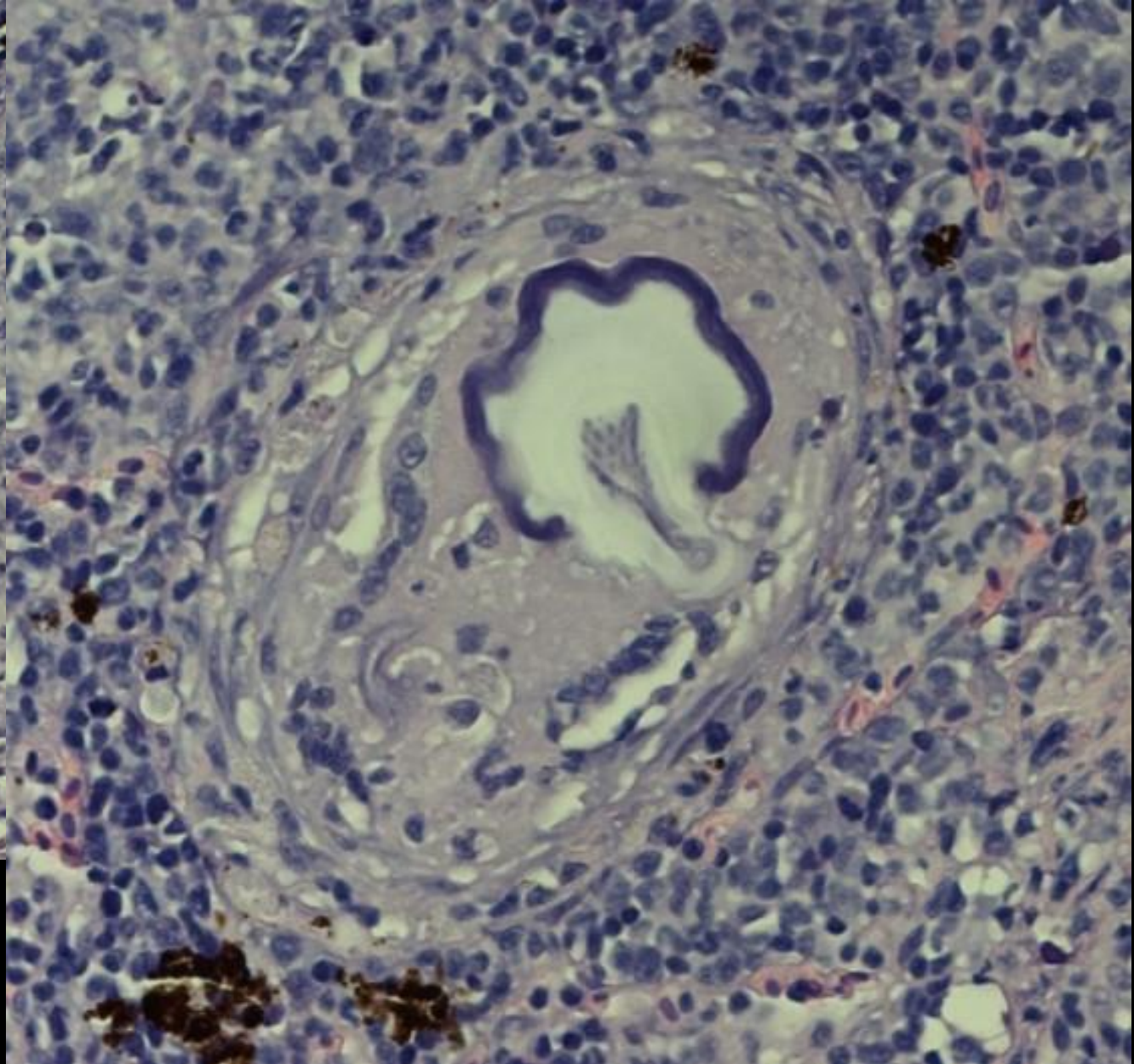
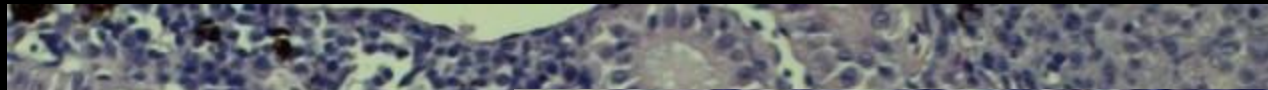
Basophilic lamellar cell membrane
Granulated cytoplasm
Multiple small basophilic nuclei

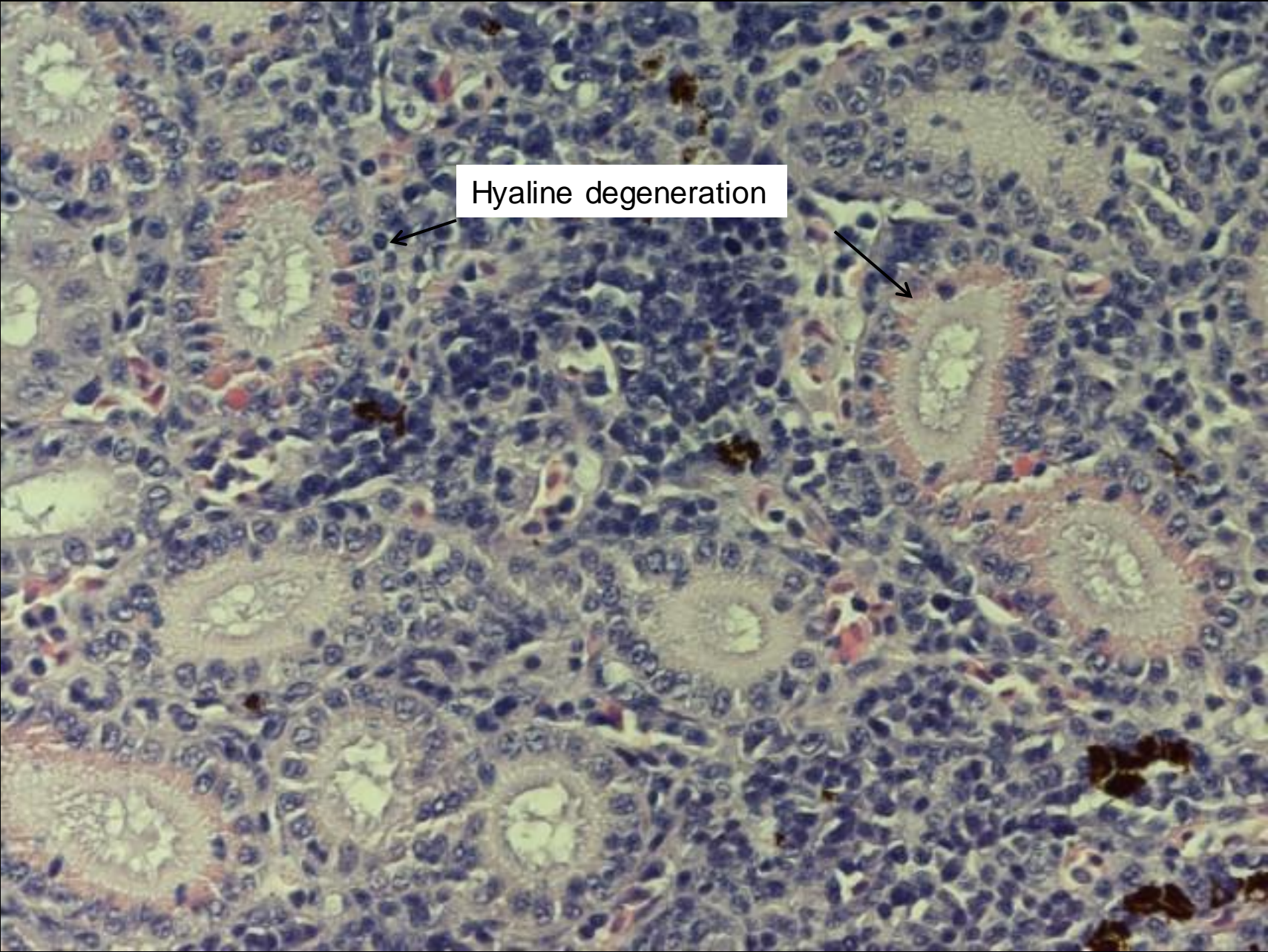
Multinucleated giant cells





Degenerated spore





Hyaline degeneration



Morphological diagnosis

Kidney, granulomatous nephritis, multifocal, severe with *Ichthyophonus* spores

Aetiology

Ichthyophonus hoferi

