

Marie Curie Training Courses

Summer School 2004 – Reptile Case 19

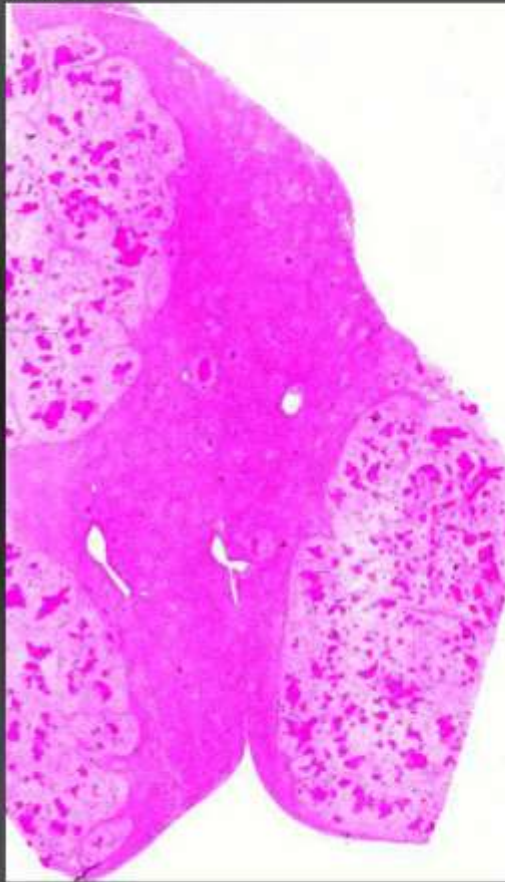
19 Monitor Lizard
Common Water Monitor
Varanus salvator



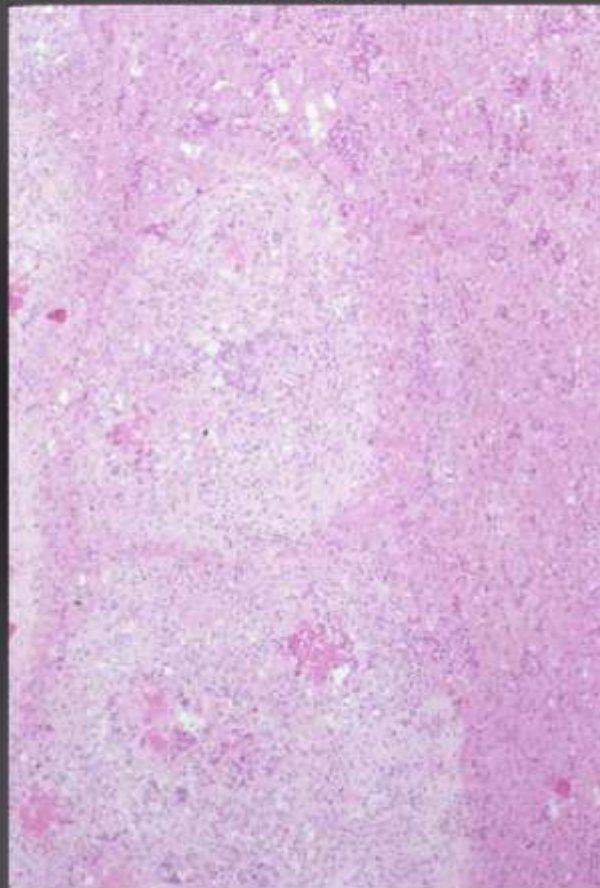
19 Monitor Lizard
Common Water Monitor
Varanus salvator



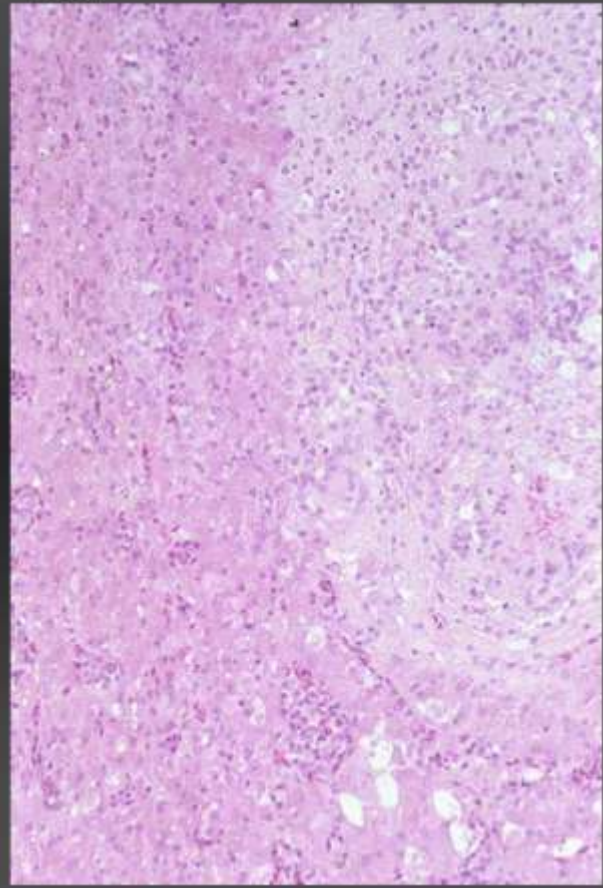
Liver

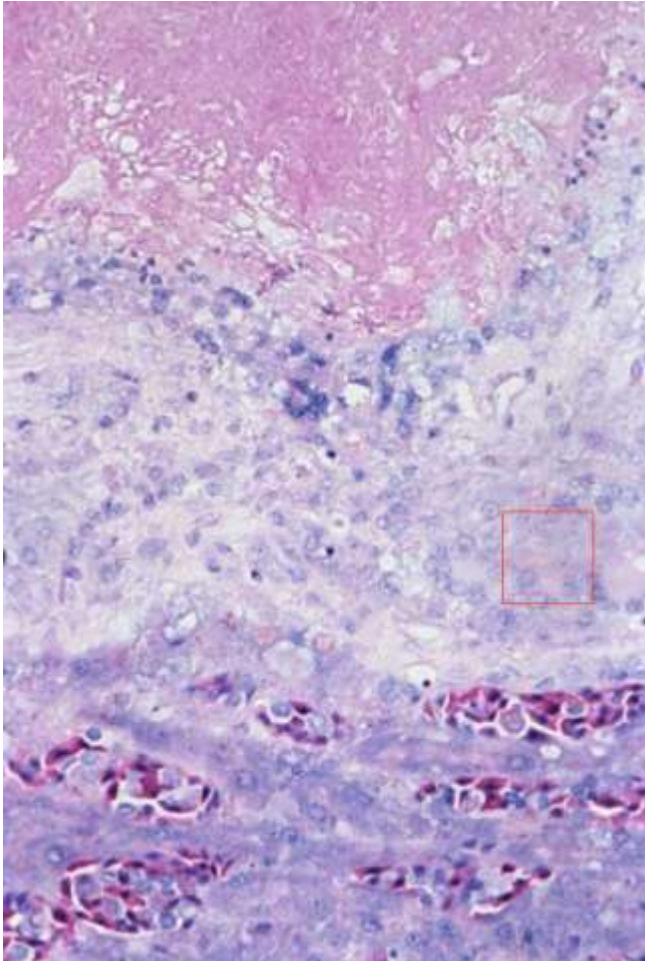


19 Monitor Lizard



Liver





19 Monitor Lizard
Common Water Monitor
Varanus salvator

Morphologic Diagnosis:

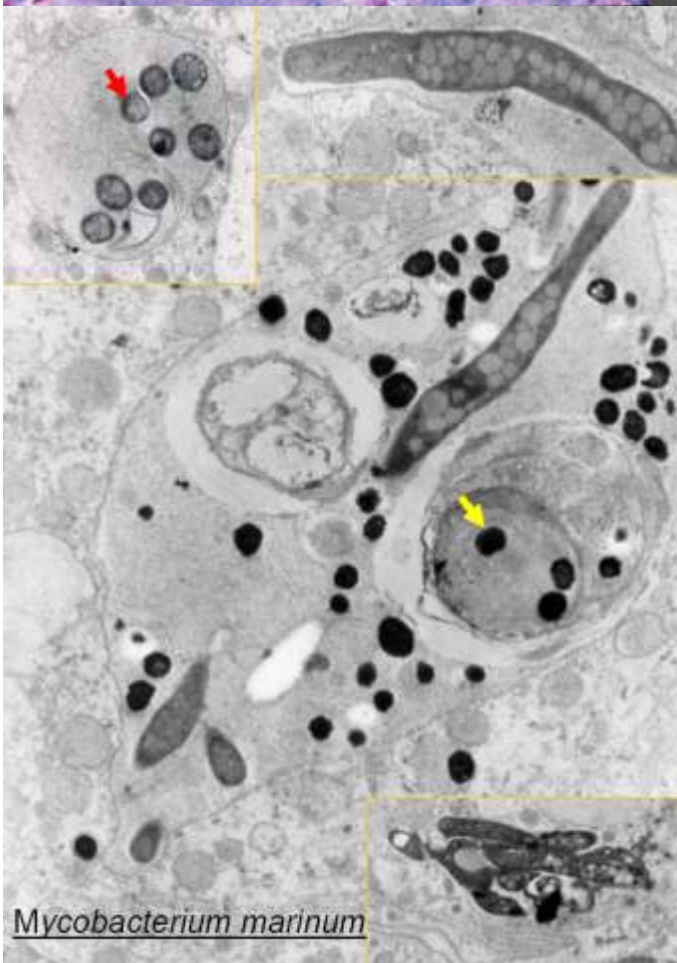
Liver:

granulomatous hepatitis, multifocal,
severe, chronic

Aetiologic diagnosis: Mycobacteriosis

ZN: positive rod-shaped intracellular
bacteria

(*Mycobacterium marinum*)



Mycobacterium marinum

- occurrence: fish, amphibians, reptiles, man
(zoonosis, tank granuloma)

- oral / intestinal infection ? (water, soil ?)

M. marinum in intestinal lumen

via ?	- enterocytes	<i>M. avium</i>
?	- M cells	<i>M. tuberculosis,</i> <i>M. bovis,</i> <i>M. paratuberculosis</i>

- lymphogenic spread

- intracellular - via macrophages

- actin polymerisation for direct cell to cell spread

Mycobacterium marinum