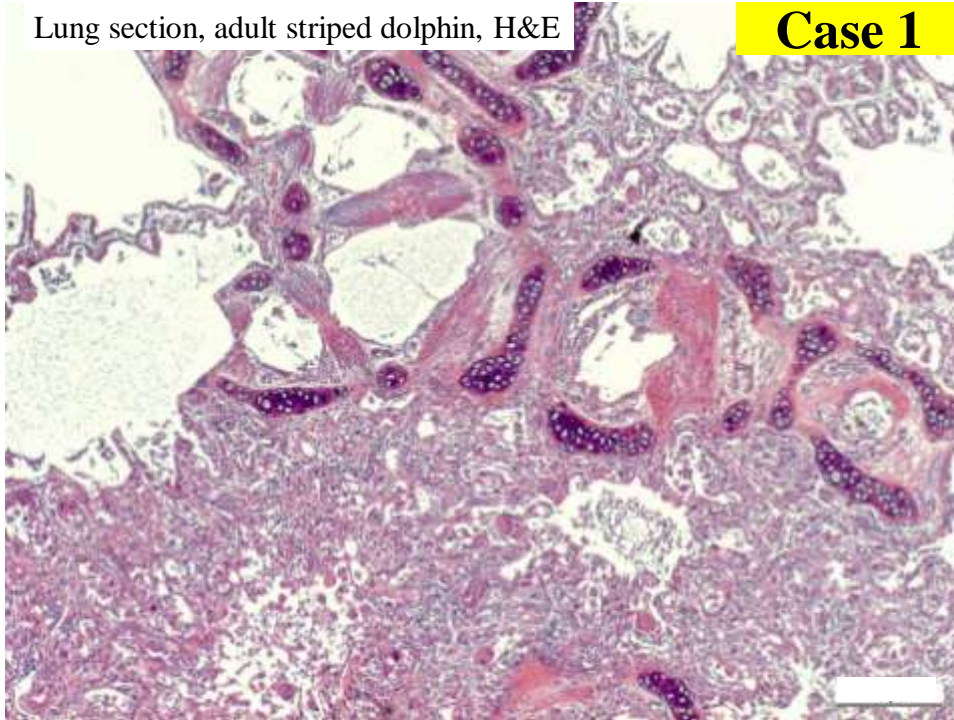


Marie Curie Training Courses

Summer School 2005 – Marine Mammals Case 1

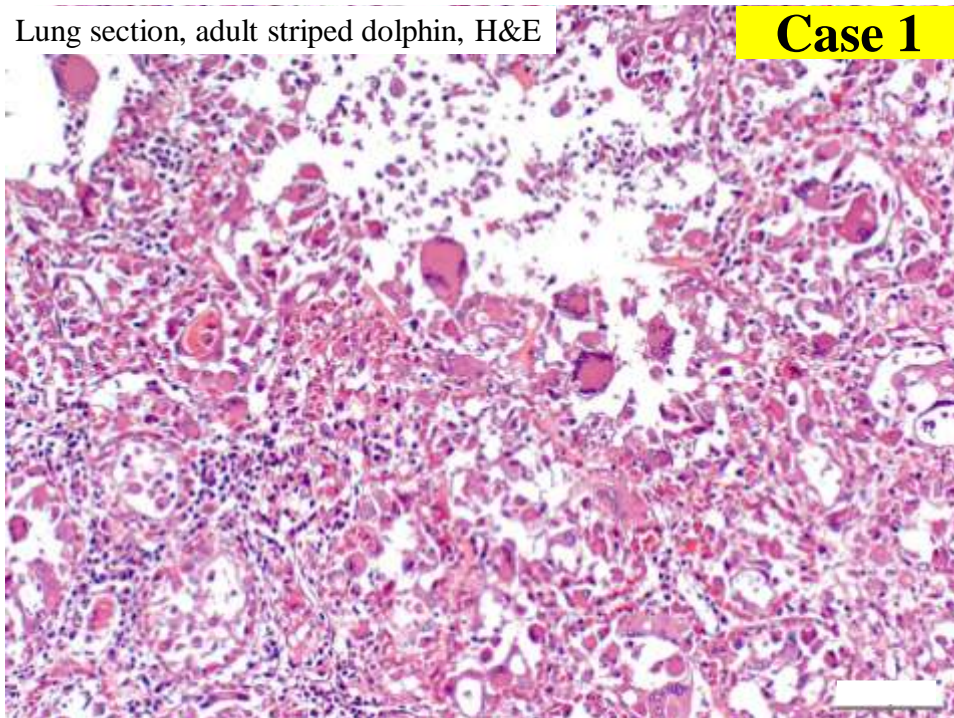
Lung section, adult striped dolphin, H&E

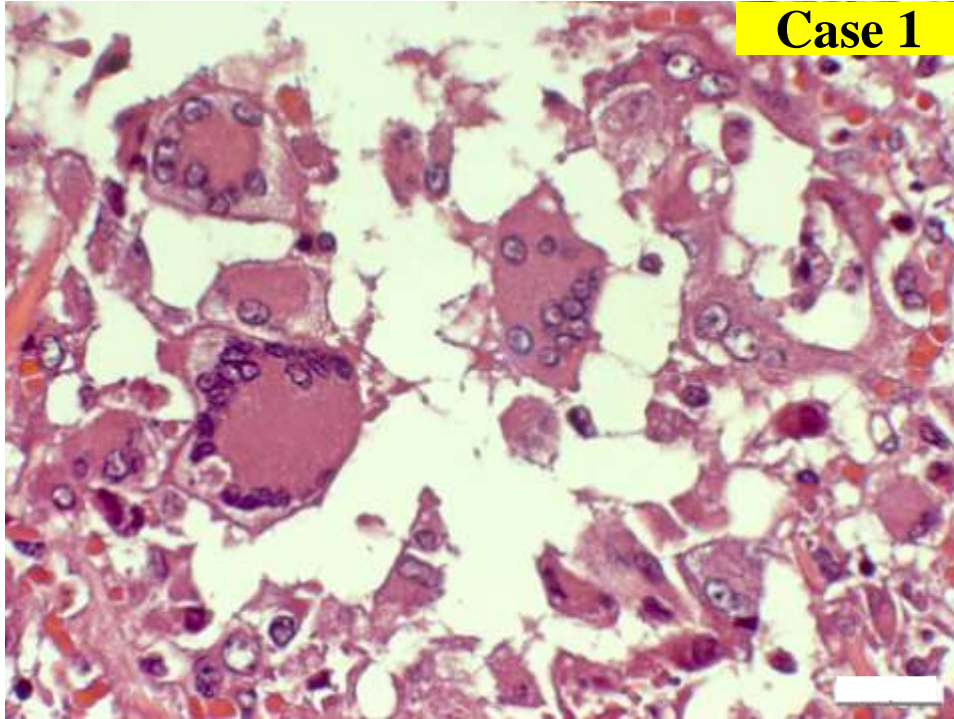
Case 1



Lung section, adult striped dolphin, H&E

Case 1





Case 1

Case 1

Histopathological Diagnose

- **Multifocal, bronchiolo-interstitial Pneumonia**
- **Syncytial cells in alveolar and bronchiolar spaces**
- **Nuclear and cytoplasmic eosinophilic inclusions**

Lung section, Striped dolphin IHC for DMV

Case 1

