

Marie Curie Training Courses

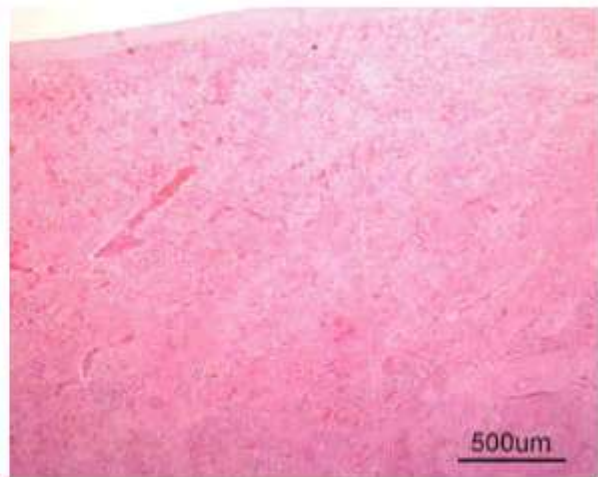
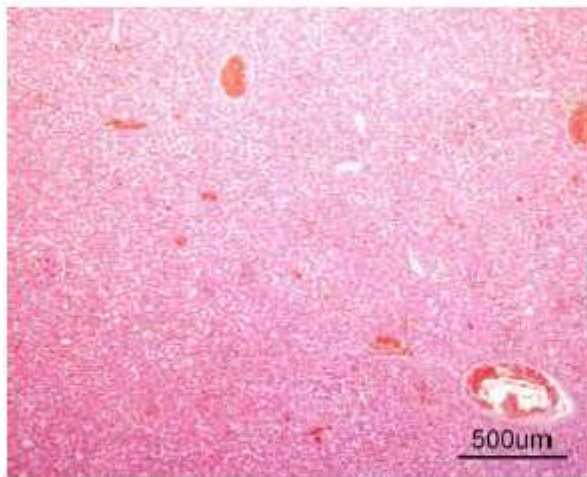
Summer School 2007 – Avian B1

B1. Turkey.

Organs? Morphologic diagnosis? Special procedure?

B1. Turkey (2 organs)

011381A



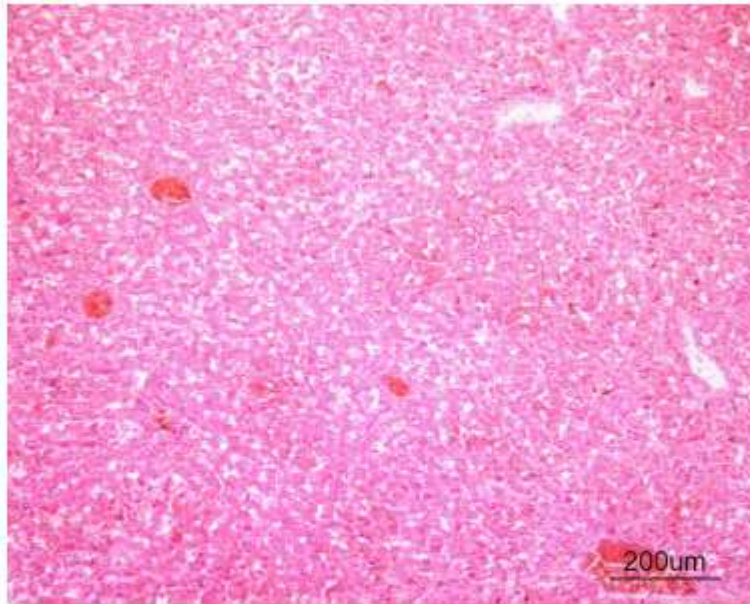
Organs? Keywords?

Morphologic diagnosis?

Special procedure needed to confirm your etiologic diagnosis?

B1. Turkey

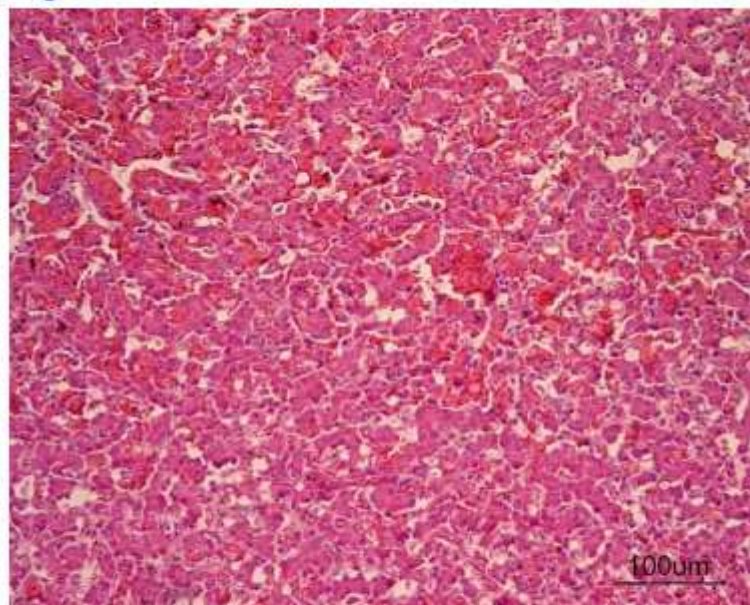
011381A



Liver.
Diffuse lesion.

B1. Turkey

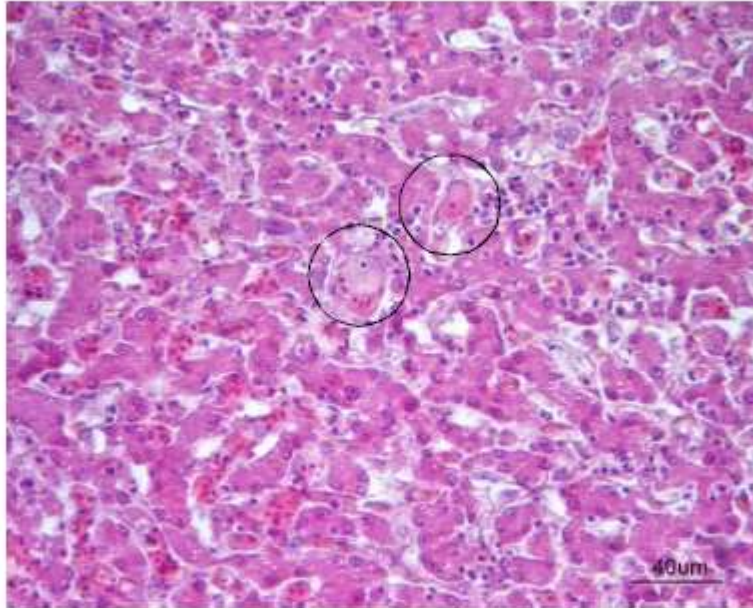
011381A



Sinusoids: hyperaemia.
Kupffer cells: hypertrophy.

B1. Turkey

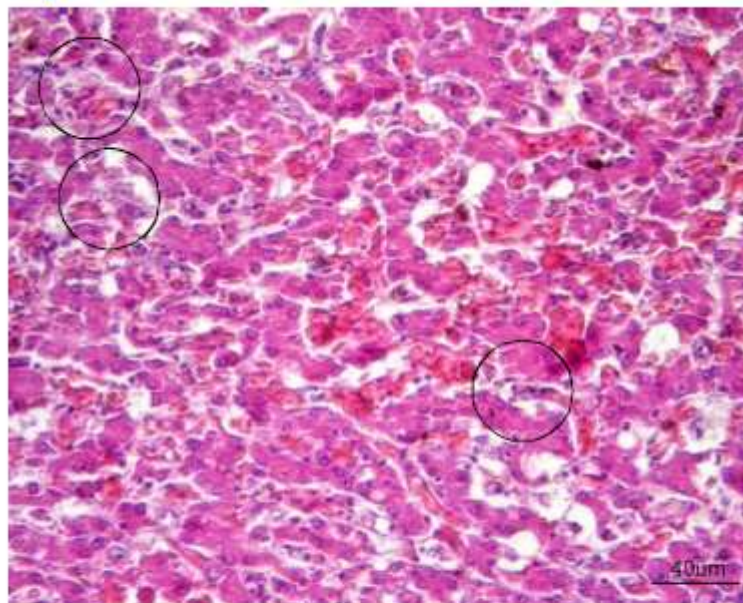
011381A



Sinusoids: hyaline **thrombosis** (fibrin)
Disseminated intravascular clotting
Lymphocytes

B1. Turkey

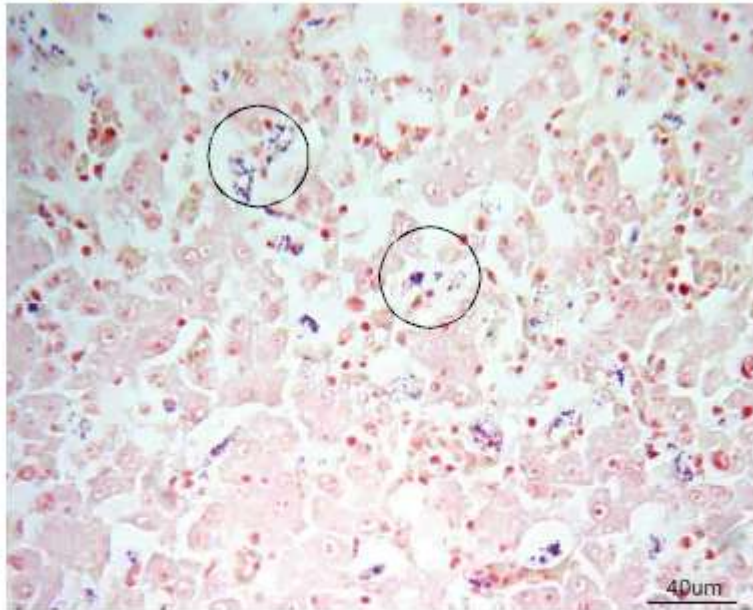
011381A



Sinusoids: extracellular, intravascular basophilic 1-micrometer anucleated microorganisms (**bacteria**) + intracytoplasmic in Kupffer cells.
Hypercellularity (**leukostasis**)

B1. Turkey

011381A

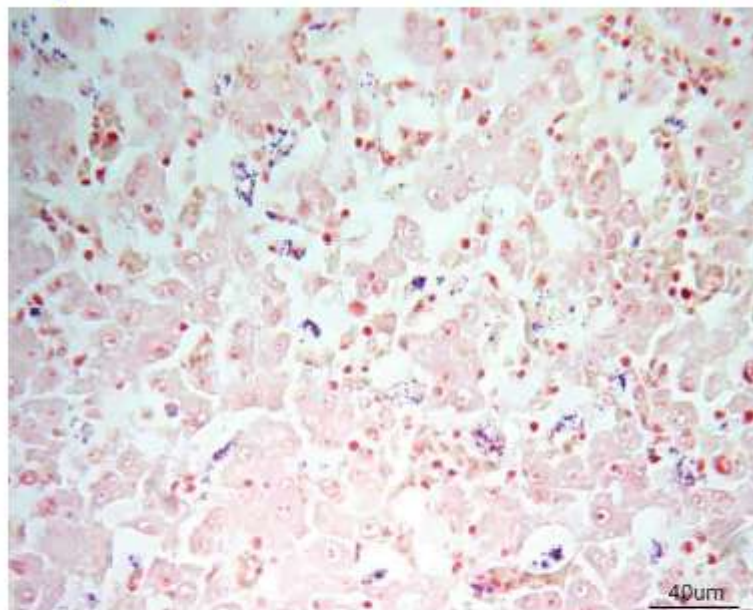


Gram stain

Colonies of **Gram-positive cocci** (1 or 2 micrometers in diameter) within the sinusoids and the cytoplasm of Kupffer cells.

B1. Turkey

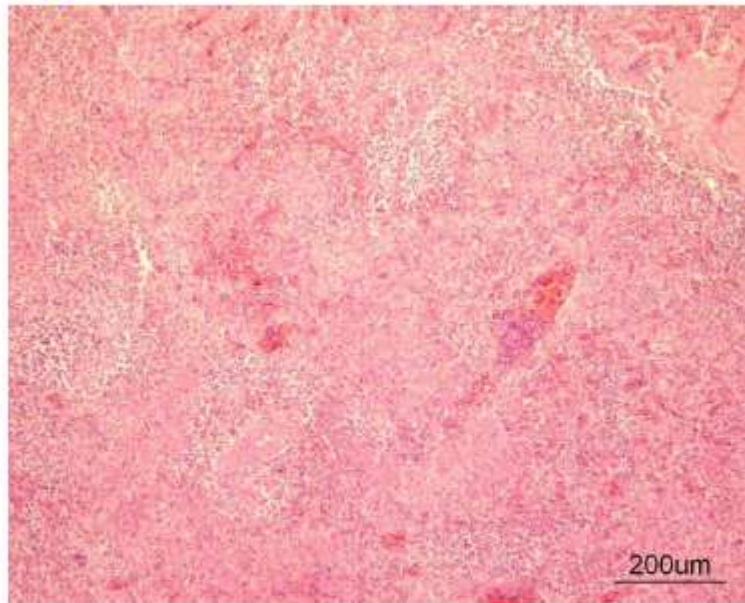
011381A



Liver, acute diffuse moderate hepatitis with sinusoid hyperaemia, thrombosis and leukostasis, and intravascular presence of bacterial colonies: **septicaemia**

B1. Turkey

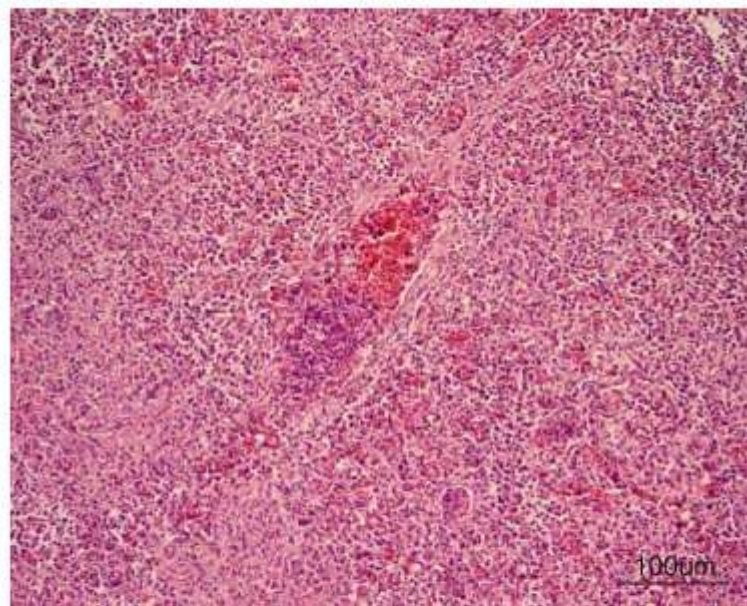
011381A



Spleen.
Multifocal lesion.

B1. Turkey

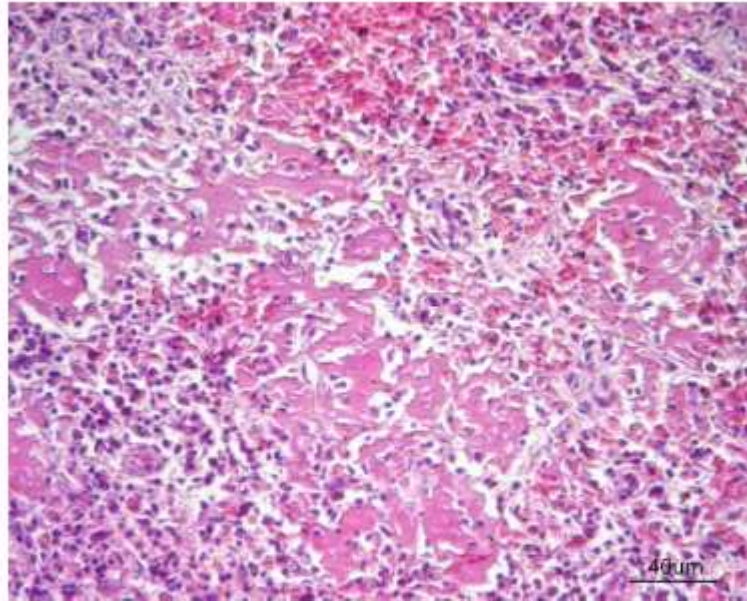
011381A



Acute **vasculitis**: thrombosis, medial necrosis.

B1. Turkey

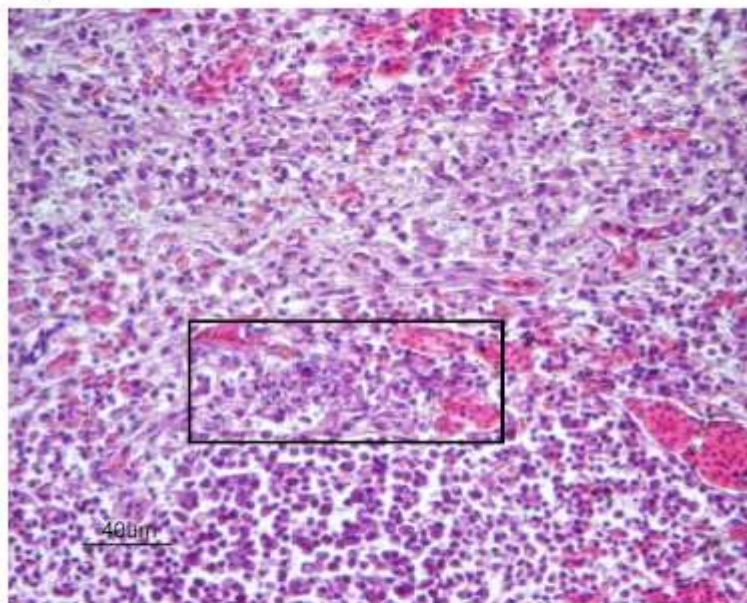
011381A



Fibrinoid necrosis of both the white and red pulp.
Micro-haemorrhages (extravasated red blood cells).
Lymphocytic pyknosis, caryorrhexis.

B1. Turkey

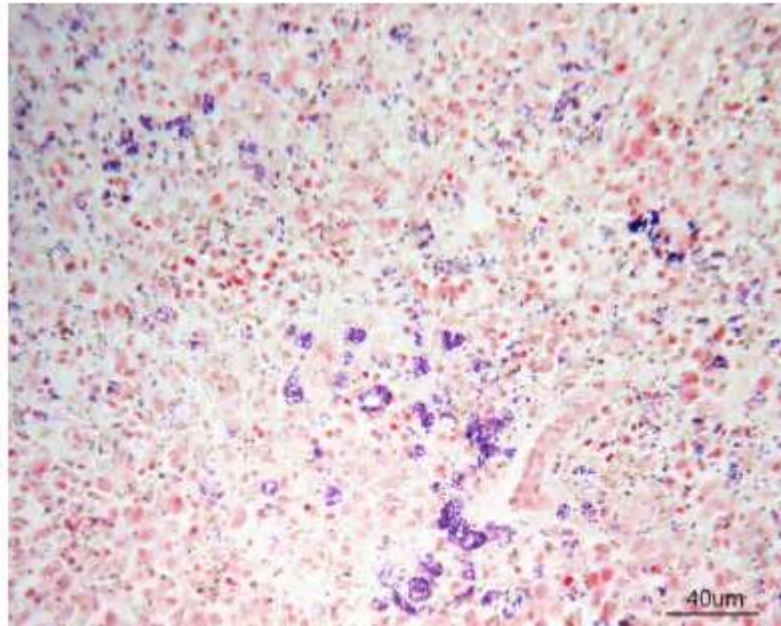
011381A



Sinusoids: extracellular, intravascular basophilic 1-micrometer anucleated microorganisms (**bacteria**) + intracytoplasmic in macrophages.
Red pulp: **macrophage hypertrophy** (activation, phagocytosis).

B1. Turkey

011381A

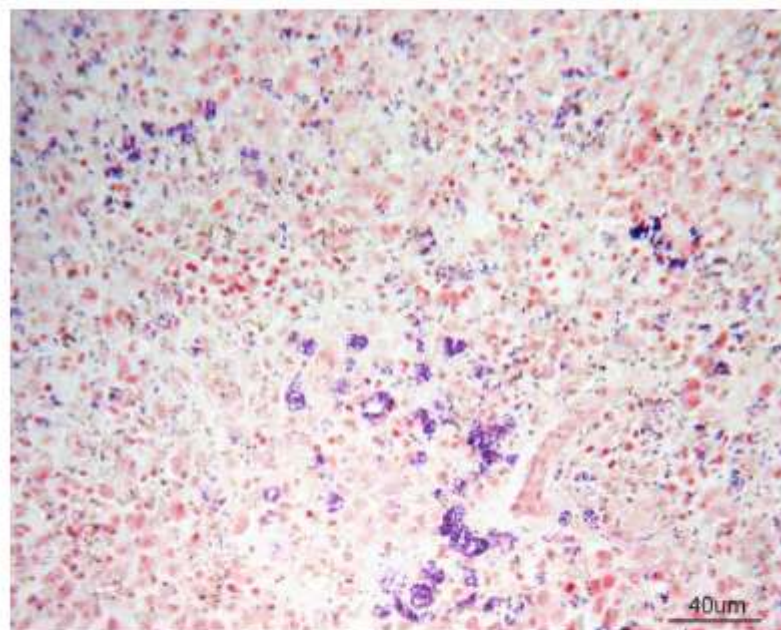


Gram stain

Intravascular, extracellular colonies of **Gram-positive cocci**

B1. Turkey

011381A



Spleen, multifocal acute marked necrotizing splenitis with intrasplenic extracellular intravascular bacteria and septic vasculitis, **septicaemia**.