

Marie Curie Training Courses

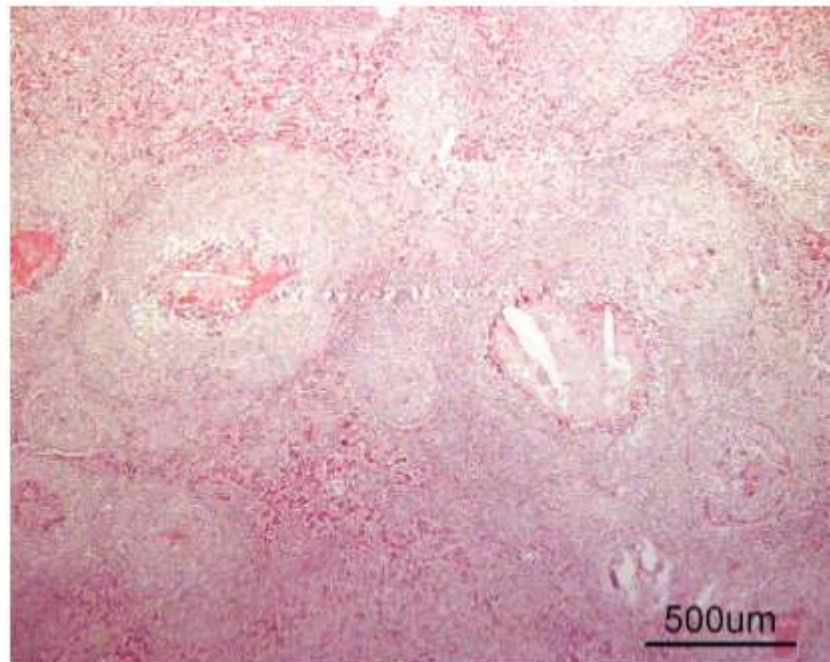
Summer School 2007 – Avian B2

B2. Hen.

Organ? Morphologic diagnosis? Etiologic diagnosis?

B2. Hen

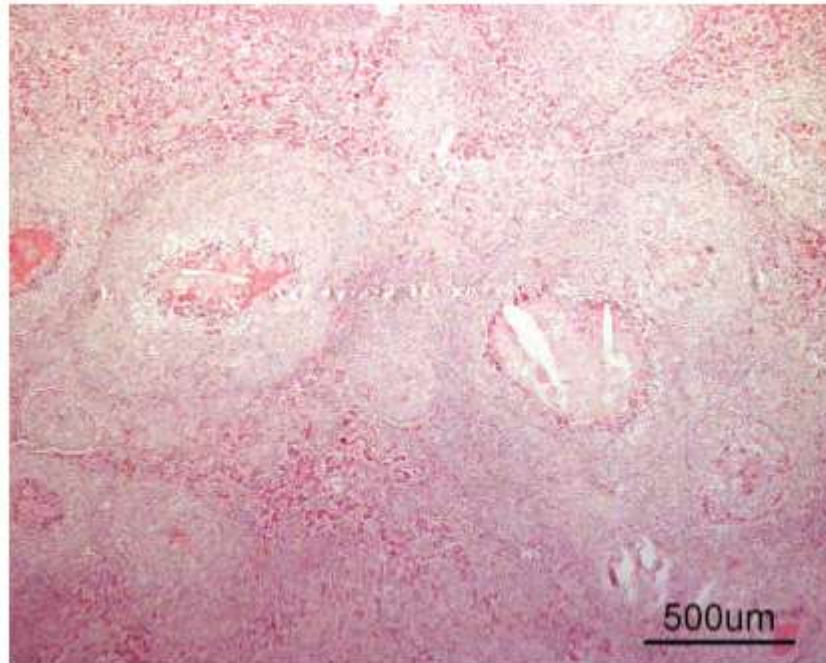
890989



Organ? Keywords?
Morphologic diagnosis?
Etiologic diagnosis?

B2. Hen

890989

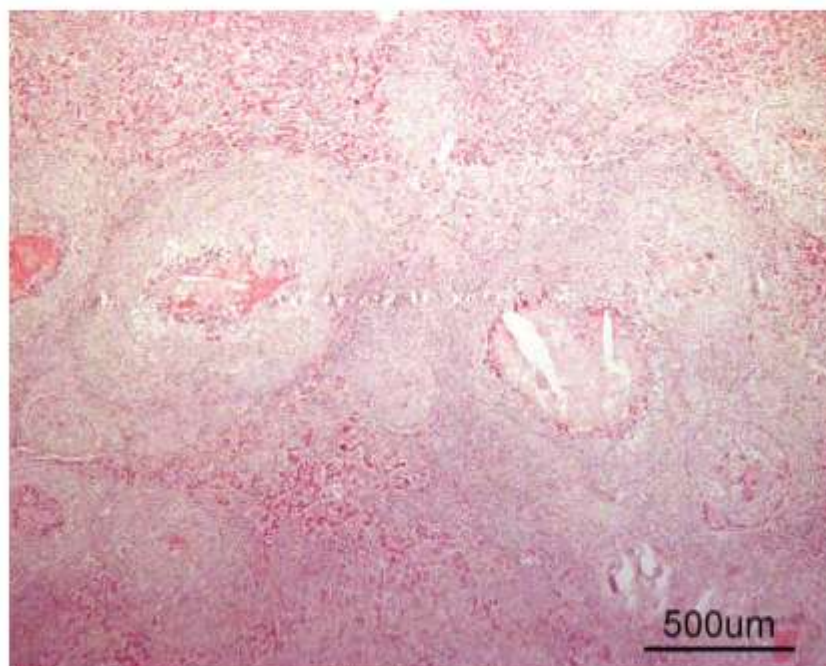


Liver

The architecture of the **liver** is markedly distorted by **random, multifocal** to coalescing, **up to 1-mm diameter**, variably encapsulated, **granulomas**.

B2. Hen

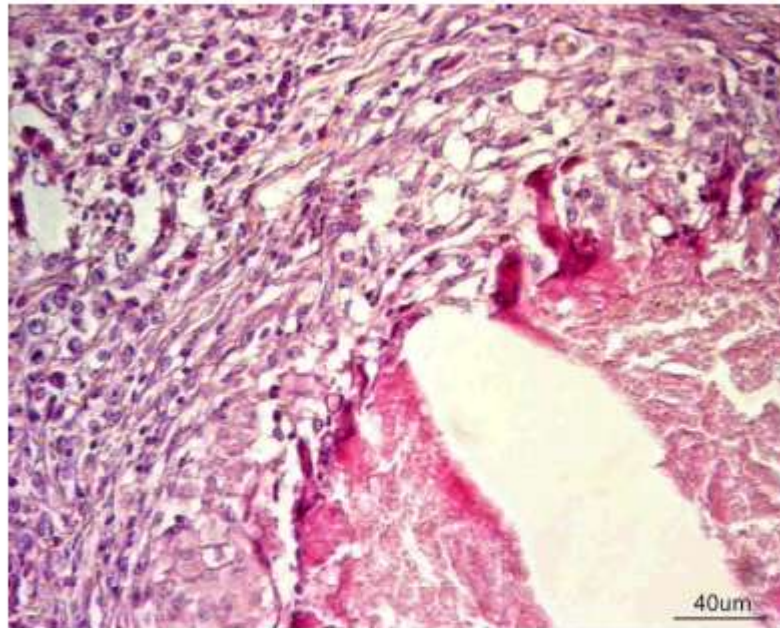
890989



The larger granulomas contain, from the centre to the periphery: a central mass of amorphous hypereosinophilic material with karyorrhectic and pyknotic nuclear debris (**caseous necrosis**); **cholesterol clefts**;

B2. Hen

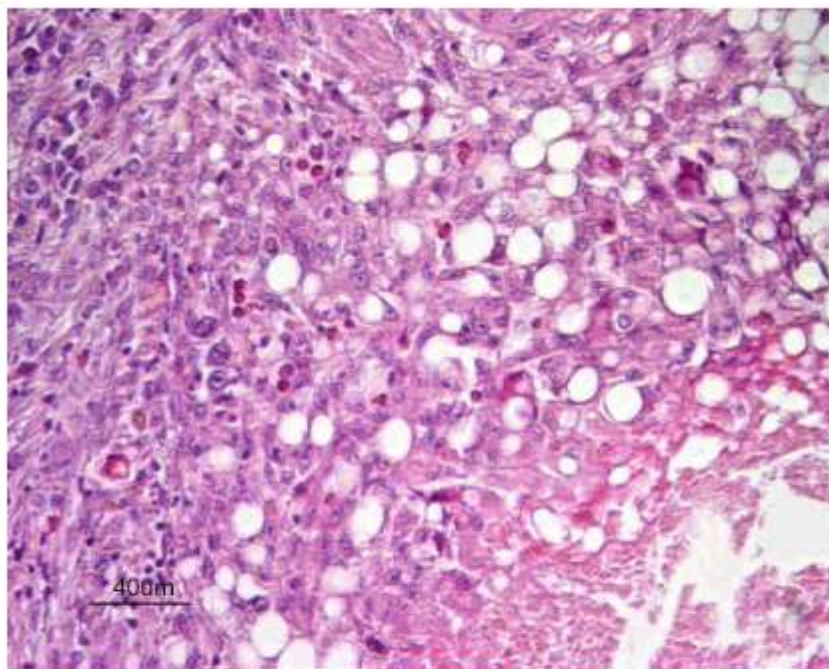
890989



... surrounded by a thick rim of large, pale acidophilic cells with indistinct borders and round hypochromatic nucleus (**epithelioid macrophages**); giant multinucleate cells with abundant eosinophilic cytoplasm and either peripheral nuclei (**Langhans-type giant cells**) or haphazardly-placed nuclei (**foreign-body-type giant cells**);

B2. Hen

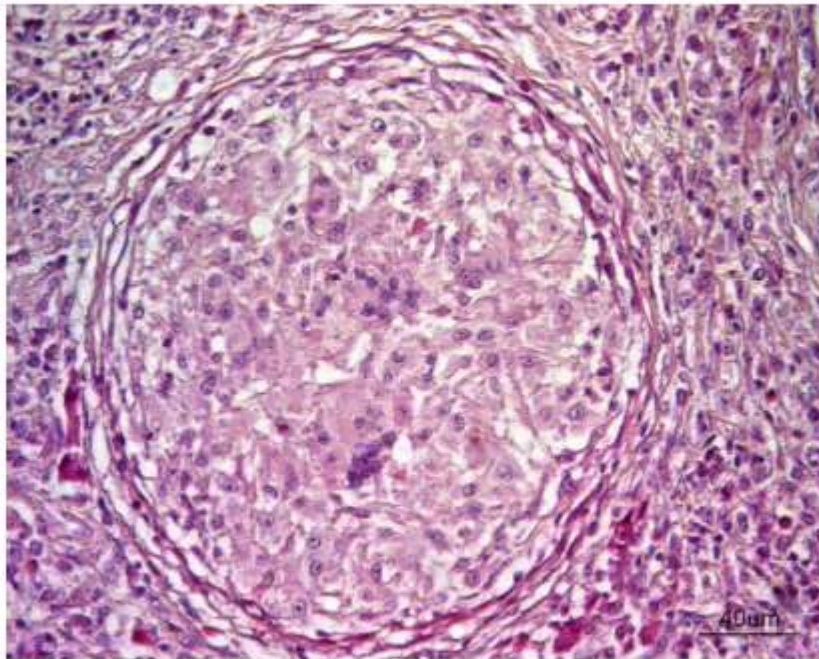
890989



... moderate amount of **lymphocytes**, few **plasma cells** and **heterophils**; a thin rim of **fibrosis**. Within granulomas, some macrophages are round, large, and filled with an empty cytoplasmic vacuole (**lipid-laden macrophages**).

B2. Hen

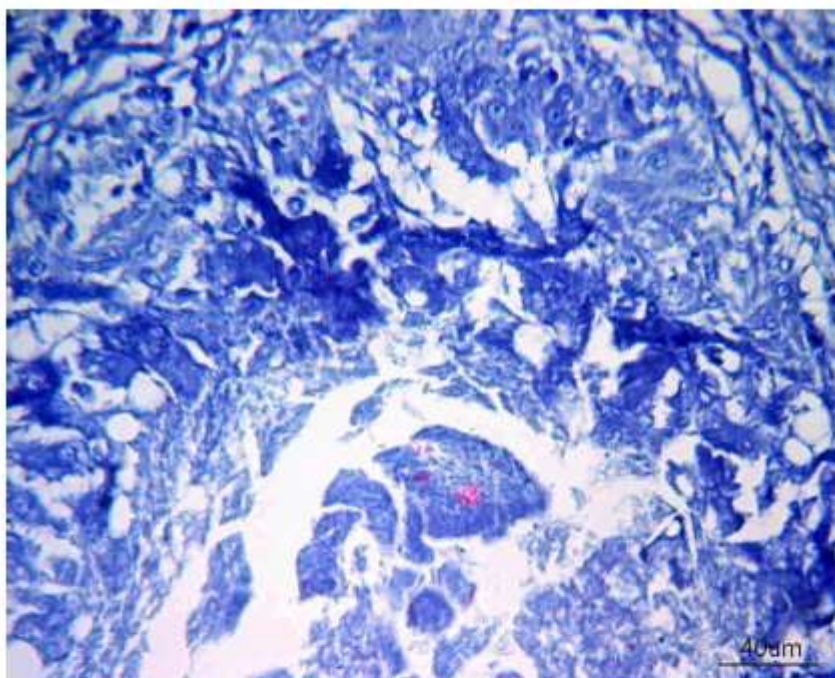
890989



Smaller granulomas contain **epithelioid macrophages**, Langhans giant cells, foreign body giant cells, and do not possess a necrotic centre.

B2. Hen

890989

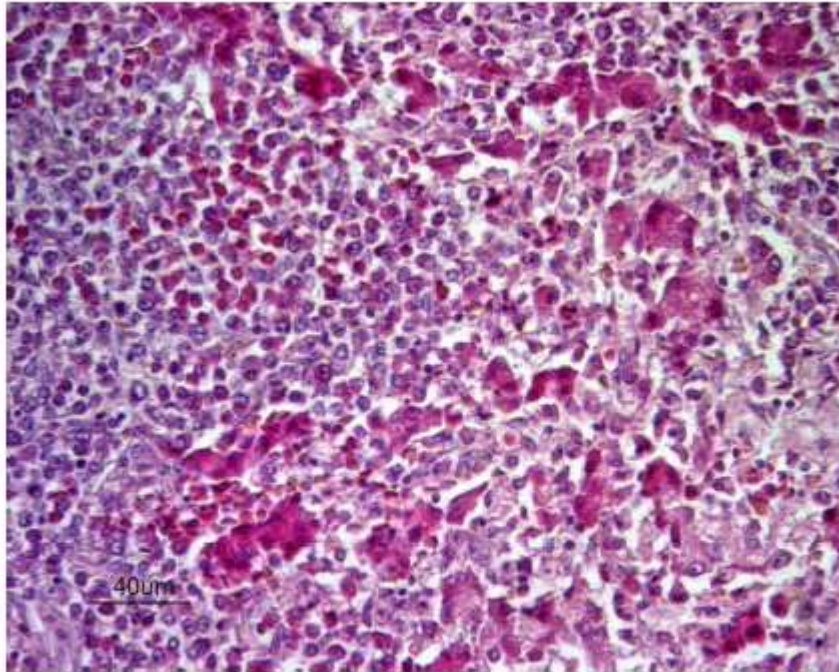


Fite-Farraco stain

Acid-fast bacilli within the necrotic centres of the granulomas, low amount

B2. Hen

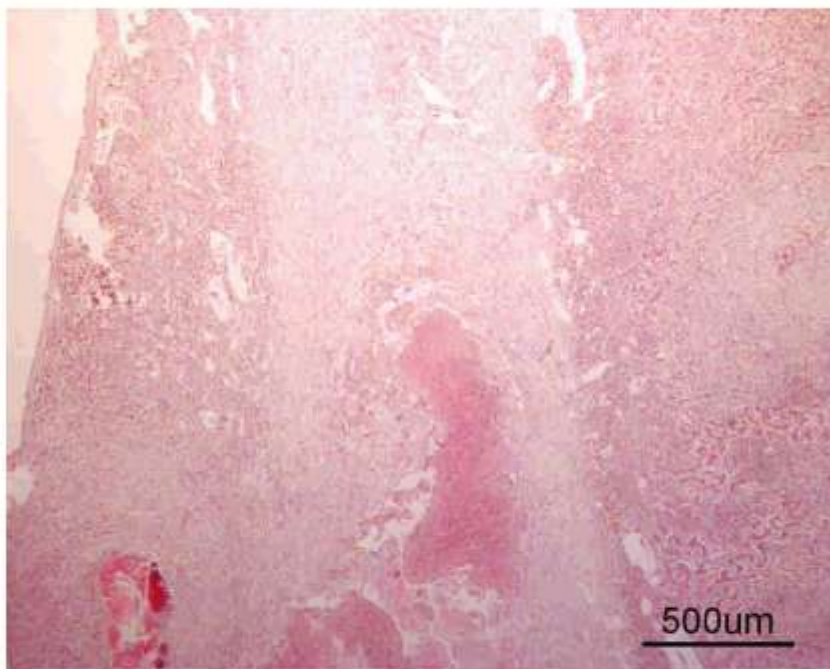
890989



Within the remnant hepatic parenchyma, there are multiple foci of **extramedullary heterophilic granulopoiesis** (especially periportal) and lymphopoiesis \pm amyloid deposition.

B2. Hen

890989



Multifocal to coalescing marked **granulomatous hepatitis and perihepatitis** with caseous necrosis.
Mycobacterial hepatitis and perihepatitis.