

Marie Curie Training Courses

Summer School 2007 – Avian B3

B3. Chicken.

Organ? Morphologic diagnosis? Etiology?

B3. Chicken

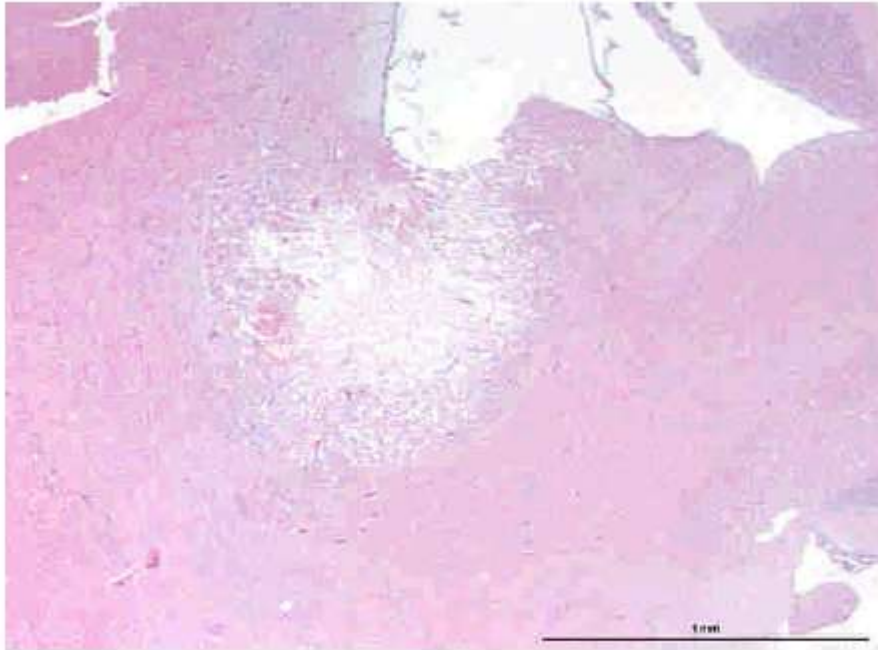
021308



Organ? Keywords?
Morphologic diagnosis?
Etiology?

B3. Chicken

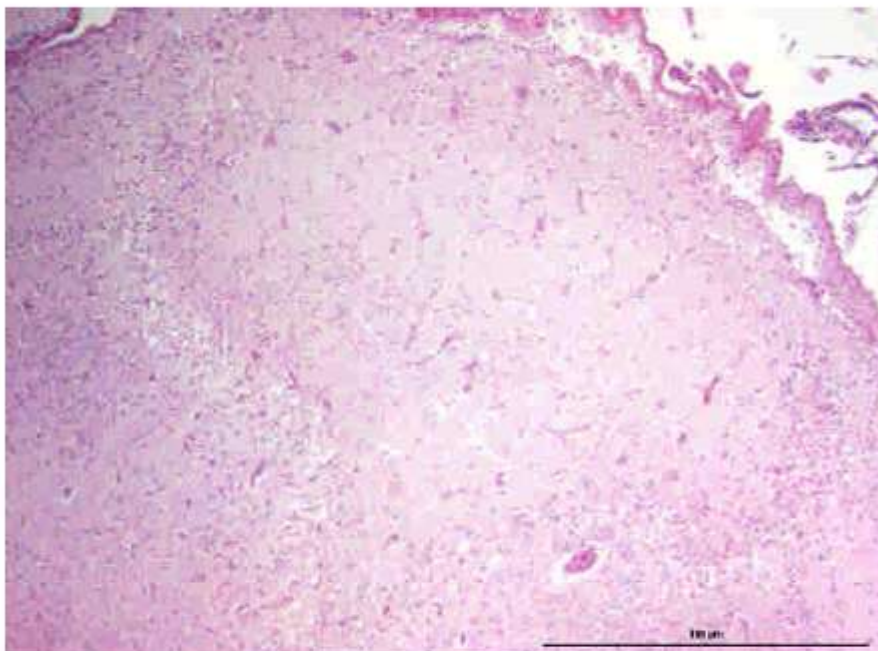
021308



Brainstem (and cerebrum) (and cerebellum)

B3. Chicken

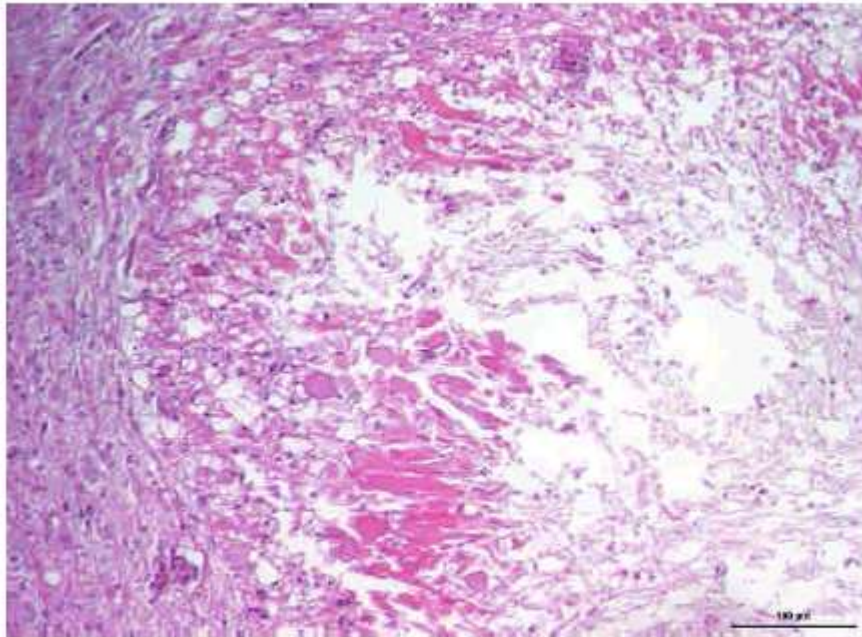
021308



In the brainstem (and cerebrum, not in all slides) is (are) one (two) well-demarcated, unencapsulated, 1-3 mm of diameter, **necrotic focus** (foci), in which ...

B3. Chicken

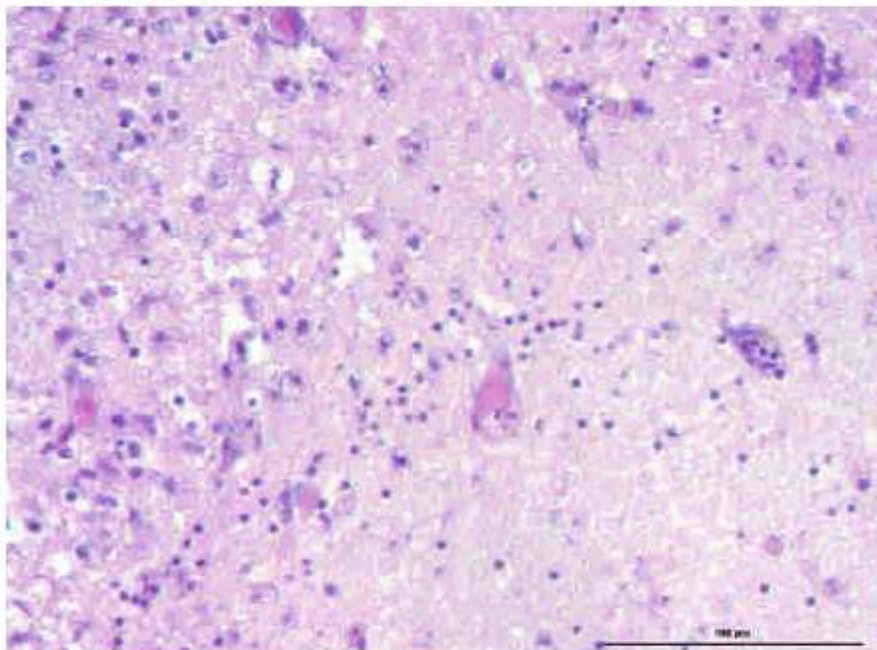
021308



the neuropil is distended by coalescing empty spaces (**oedema**), neurones and glial cells are shrunken, hyperchromatic with pyknotic nucleus (**necrosis**)

B3. Chicken

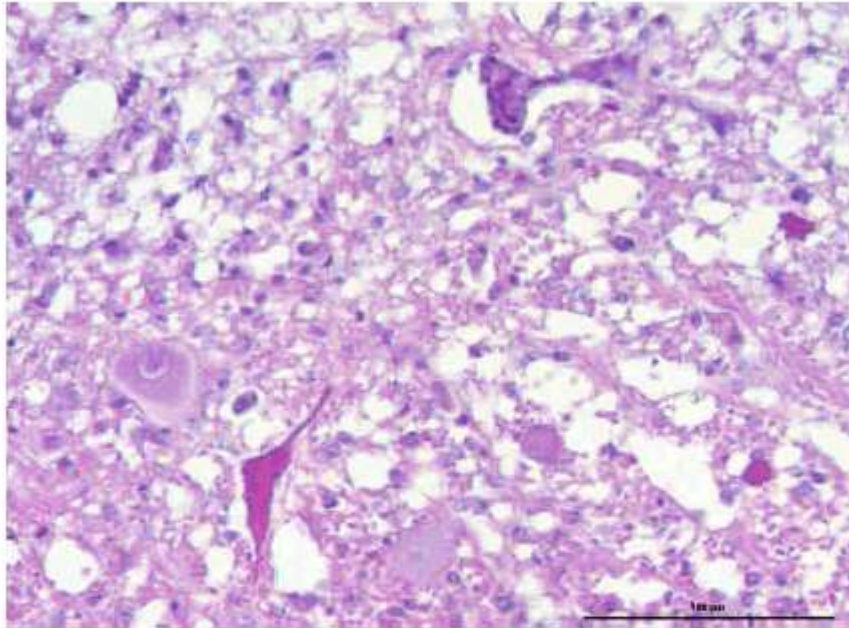
021308



capillary blood vessels are occluded by an amorphous eosinophilic material (**fibrin**) and red blood cells (**hyaline thrombosis**)
few red blood cells are extravasated (**mild haemorrhage**).

B3. Chicken

021308



neurons are devoid of Nissl bodies (**chromatolysis**),
there are microglial cells and lymphocytes within Virchow-Robin spaces of cerebral blood vessels (**perivascular cuffing**),
there is rarefaction of myelin sheaths (**demyelination**) and multifocal axonal dilatation (**spheroids**).

B3. Chicken

021308



Focal (bifocal) acute cerebral necrosis with oedema,
demyelination and capillary hyaline thrombi.

Enterococcus hirae, or *Enterococcus durans*