

## Marie Curie Training Courses

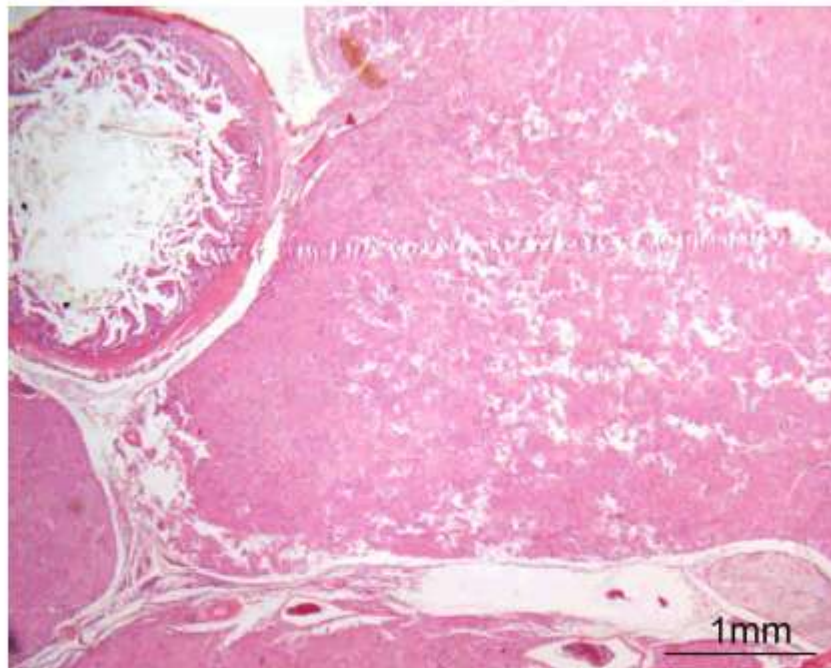
Summer School 2007 – Avian B4

### B4. Pigeon.

Organs? Morphologic diagnosis? Special procedure?

### B4. Pigeon

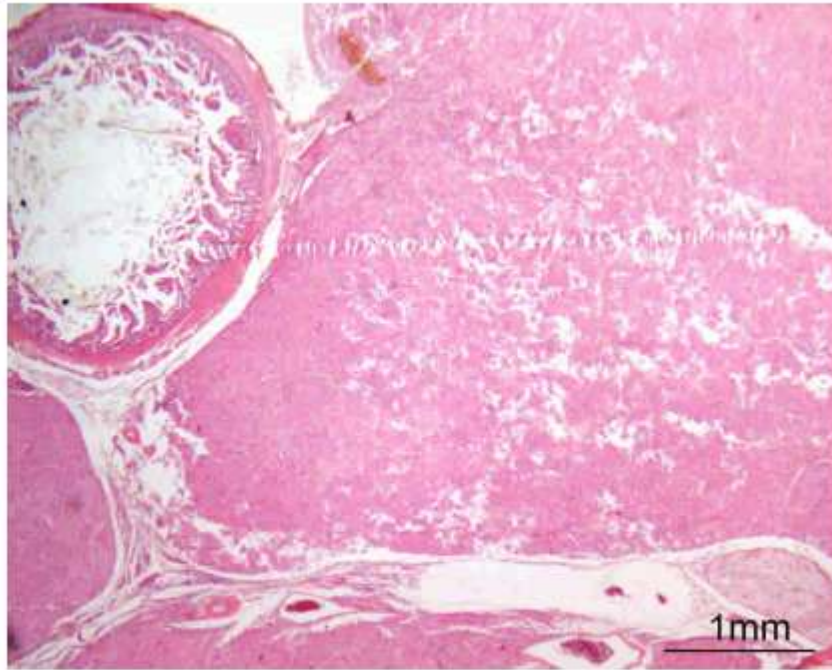
021660



Organs? Keywords?  
Morphologic diagnosis?  
Special procedure?

## B4. Pigeon

021660

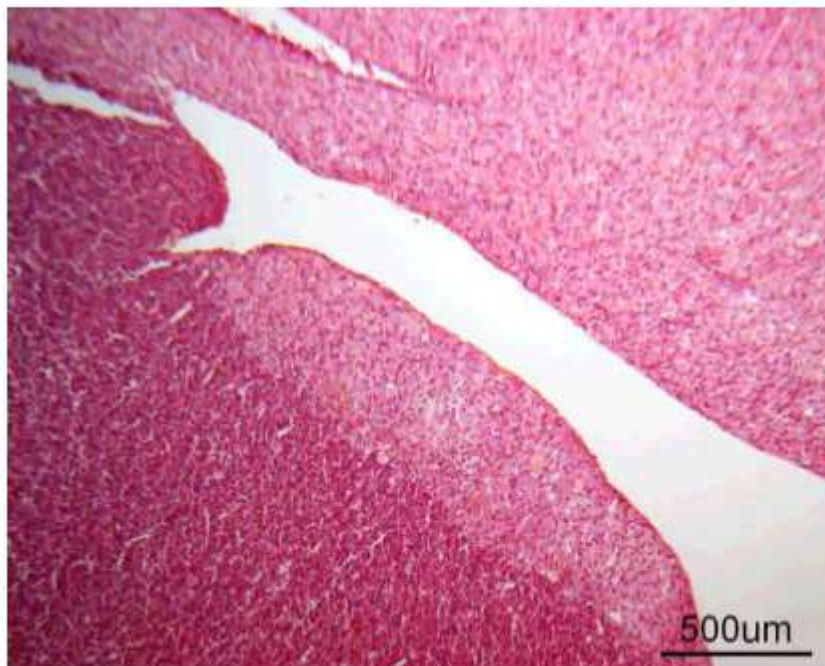


**Duodenum, pancreas, mesentery.**

Enlargement of the mesentery, replacement of the adipose tissue.

## B4. Pigeon

021660



Subtotal replacement of the **pancreas** by the inflammatory infiltrate.



## B4. Pigeon

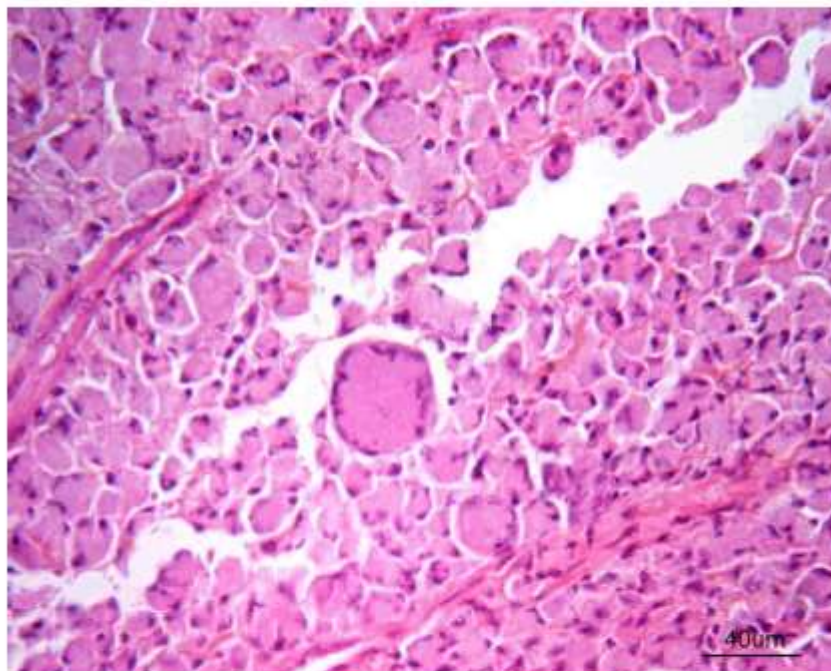
021660



Thickening of the **duodenal mucosa** by the same inflammatory infiltrate as in the mesentery and pancreas.

## B4. Pigeon

021660



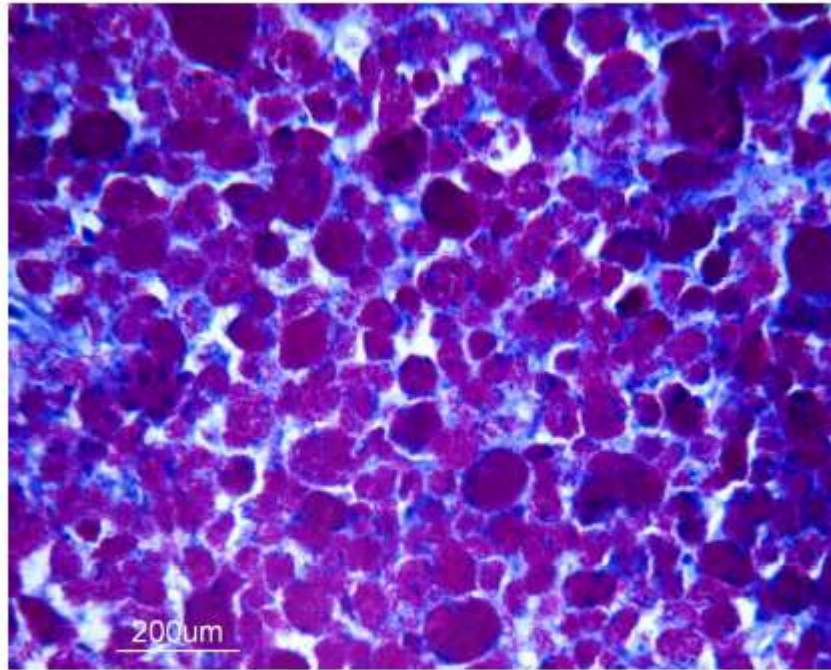
**Epithelioid macrophages.**

**Multinucleate giant cells**, Langhans type.

Small amount of **lymphocytes**. GRANULOMATOUS INFILTRATE.

## B4. Pigeon

021660

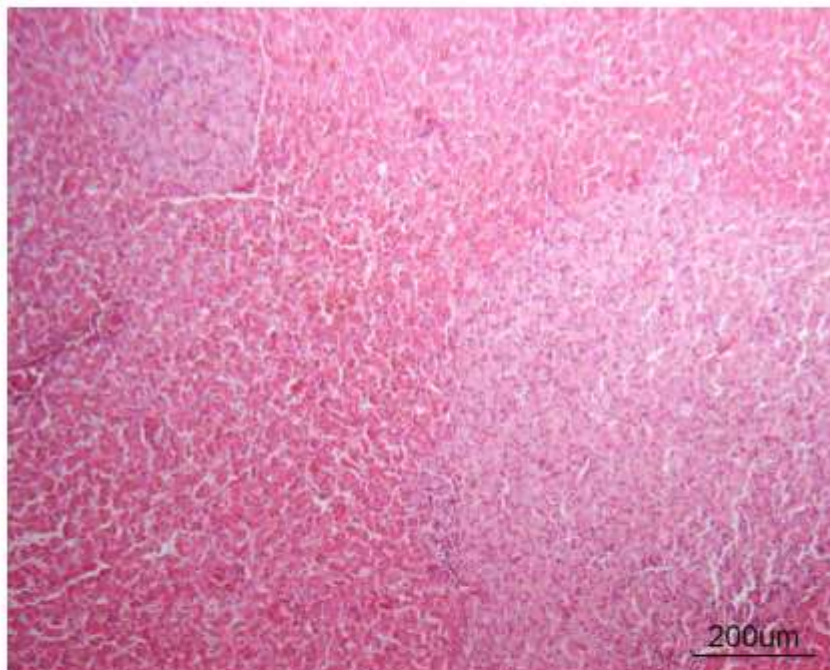


### **Fite-Farraco stain.**

Massive amount of **acid-fast bacilli** within the cytoplasm of macrophages and giant cells.

## B4. Pigeon

021660



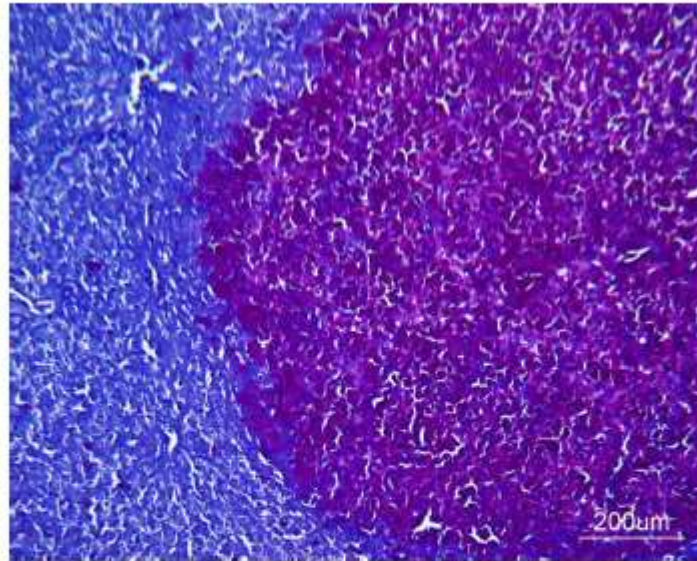
### **Liver.**

Multifocal random **granulomas**, 100 micrometers to 1 mm in diameter.



## B4. Pigeon

021660



Diffuse severe chronic **granulomatous enteritis, pancreatitis and peritonitis** with Langhans-type giant cells.

Multifocal marked chronic **granulomatous hepatitis**.

Note: *Mycobacterium avium subsp. silvaticum* in pigeons.