

Marie Curie Training Courses

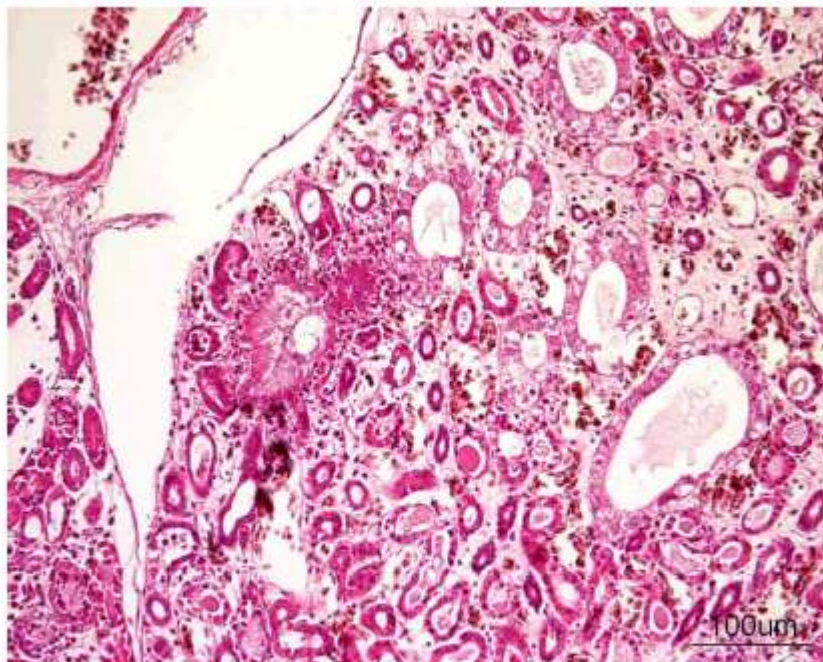
Summer School 2007 – Avian N5

N5. Cock.

Organ? Morphologic diagnosis? Name the disease.

N5. Cock

030721C



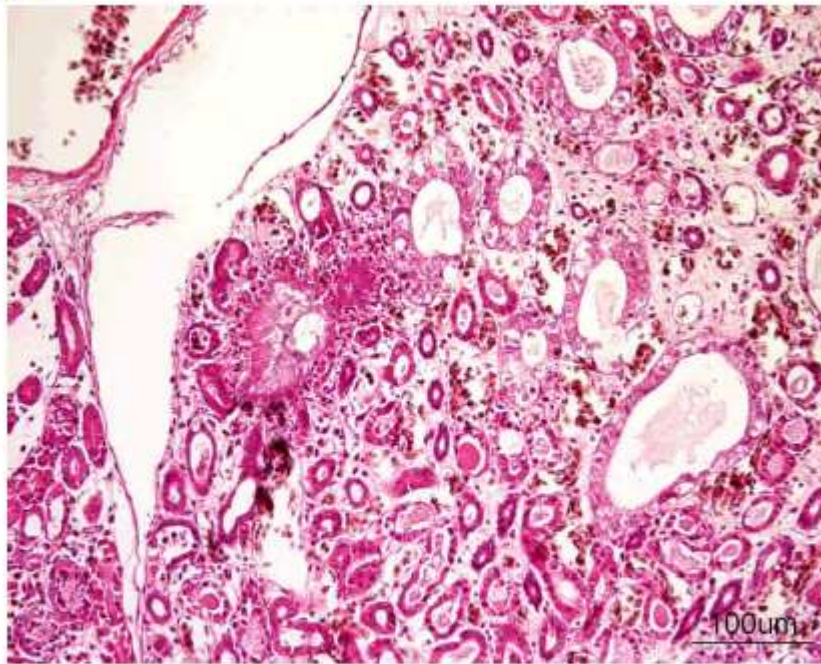
Organ?

Morphologic diagnosis?

Name the disease.

N5. Cock

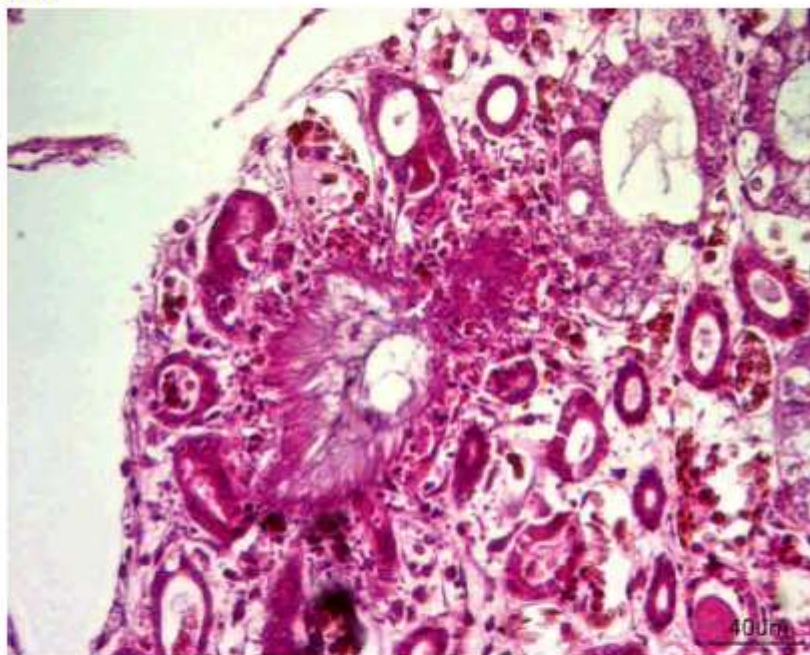
030721C



Kidney. Within the medullas, in **interstitial** location, partially replacing tubules, are occasional round, 100 micrometers in diameter, well-demarcated, accumulations of eosinophilic granular extracellular material (**urate deposition, tophi**)...

N5. Cock

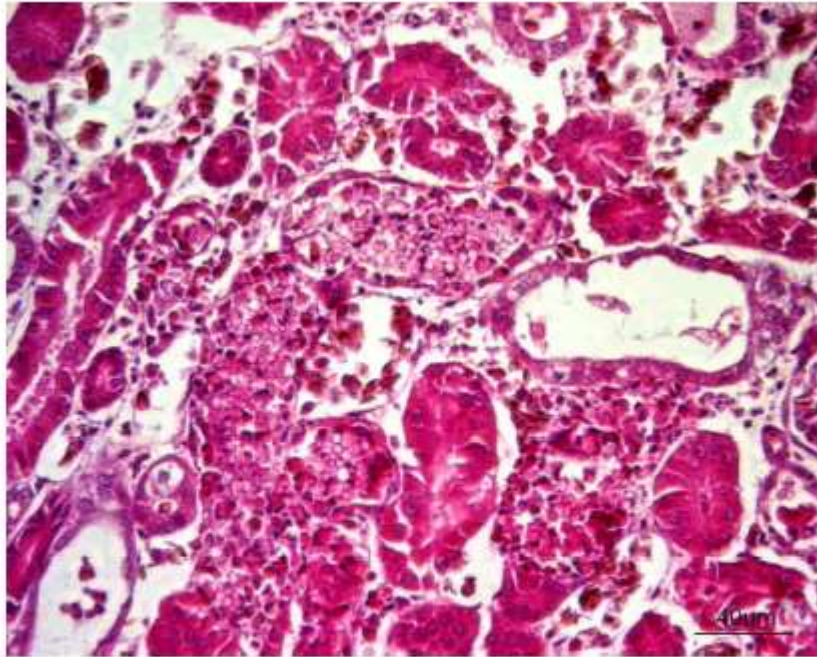
030721C



Urate crystals are admixed with a low amount of **heterophils**, a thin rim of activated macrophages, occasional lymphocytes, rare plasma cells and multinucleate giant cells (foreign body-type giant cells).

N5. Cock

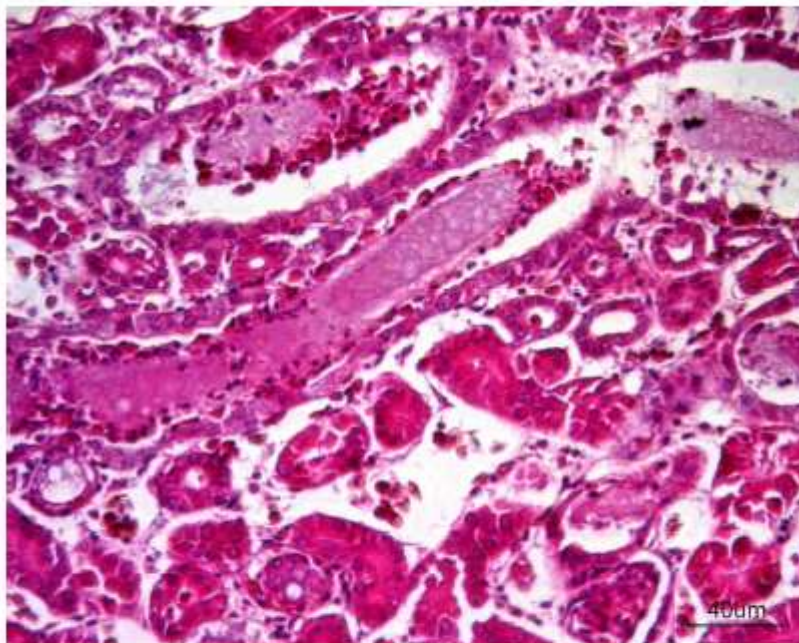
030721C



Distal renal tubules usually contain multiple 10-micrometer-in-diameter spherical aggregates of refringent material (**nephrocalcinosis**), **dilatation**, **necrosis** of nephrocytes, influx of viable and degenerate **heterophils**

N5. Cock

030721C

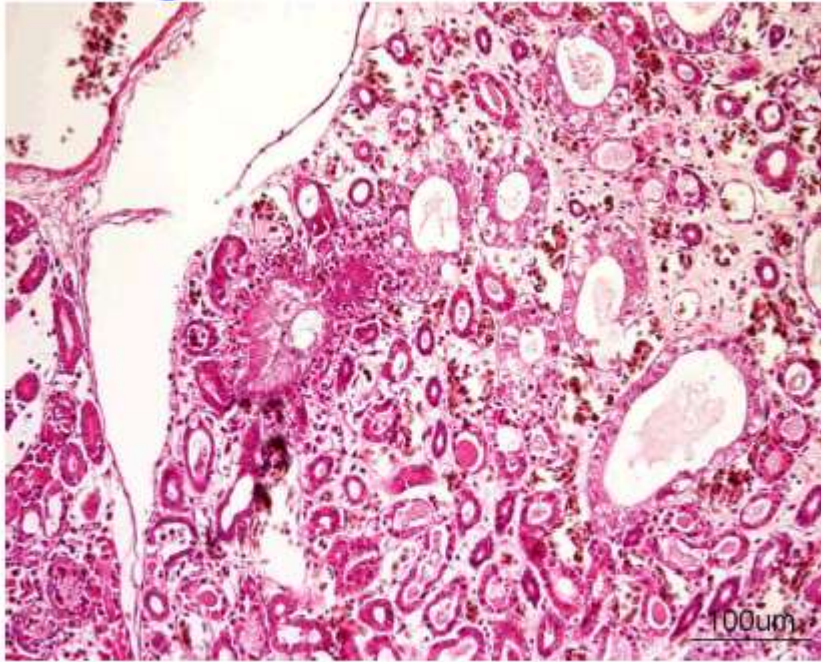


Collecting tubules show moderate ectasia, a lumen filled with mucus and occasional heterophils.

The medullary **interstitium** shows multifocal thickening with lymphocytes and plasma cells, and capillary hyperemia.

N5. Cock/ diagnosis

030721C



Multifocal marked **tubulo-interstitial nephritis** with **urate deposition (tophi)**.

Visceral gout (visceral urate deposit).