

Marie Curie Training Courses

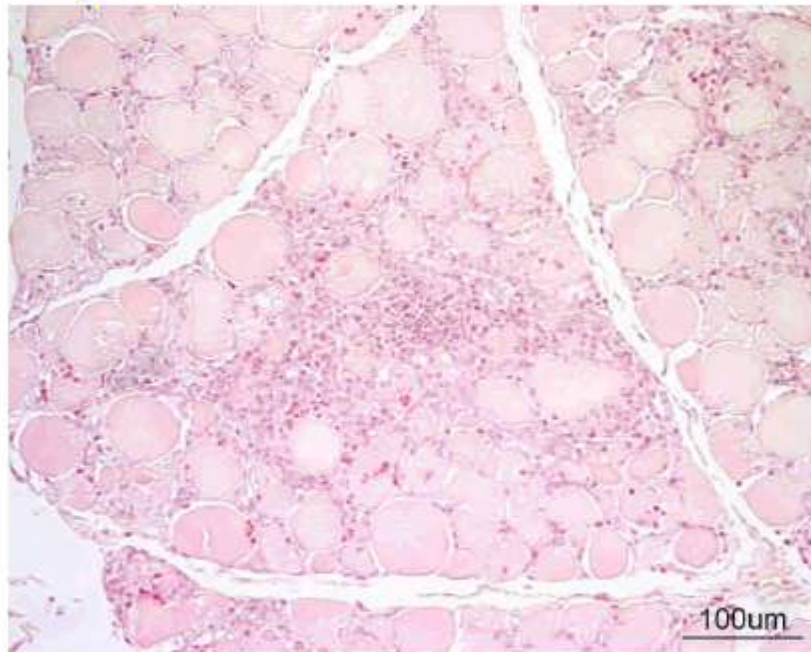
Summer School 2007 – Avian N6

N6. Turkey.

Tissue? Morphologic diagnosis? Etiology?

N6. Turkey

060842B



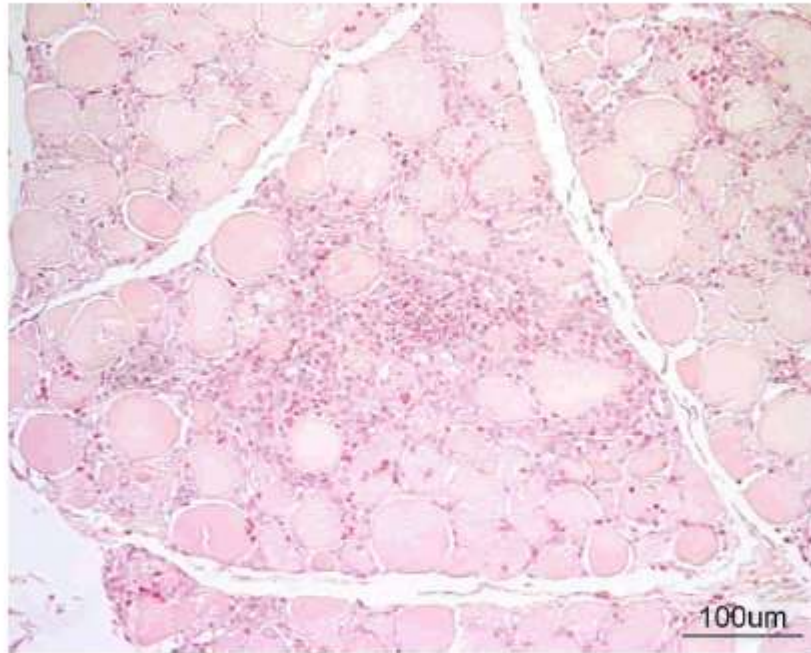
Tissue?

Morphologic diagnosis?

Etiology.

N6. Turkey

060842B



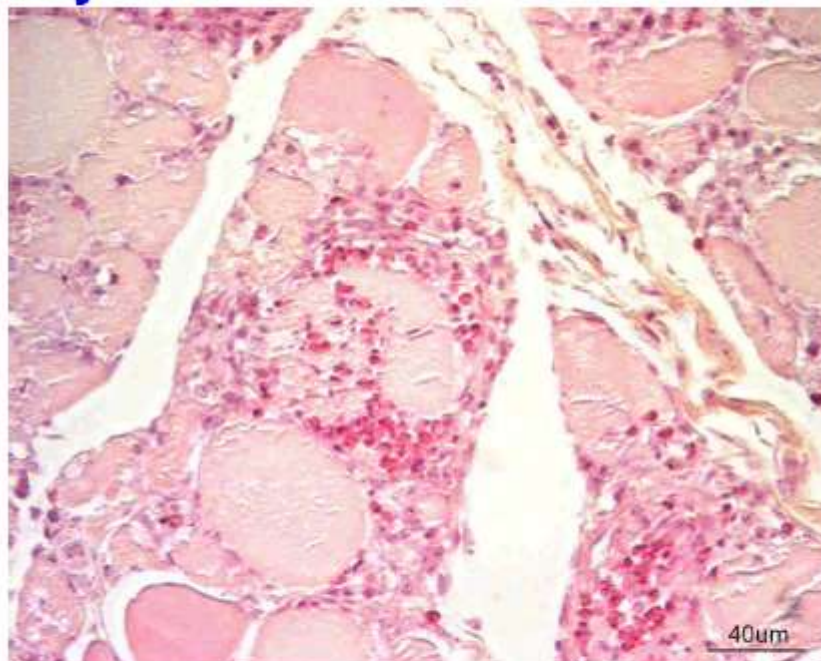
Skeletal muscle.

One sample: unaffected.

The other sample: **diffuse lesion.**

N6. Turkey

060842B

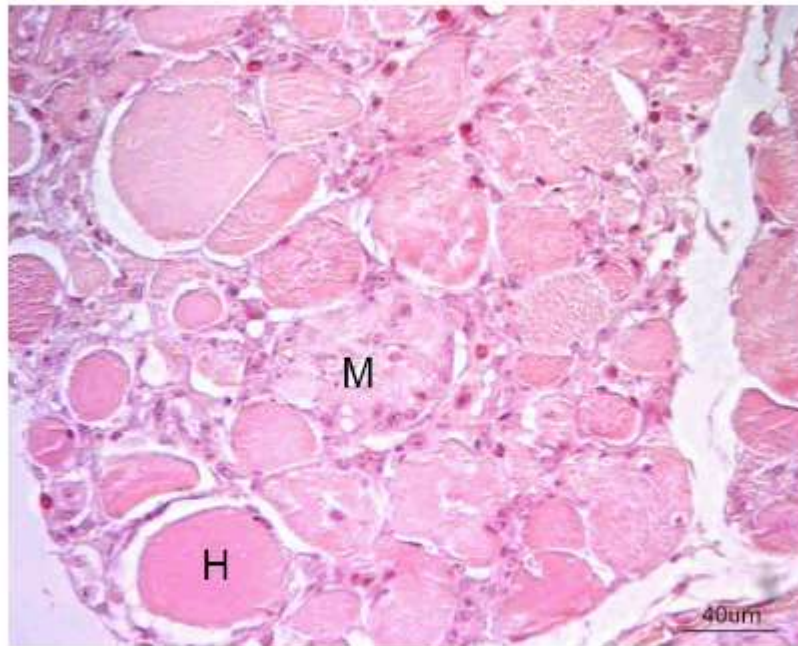


Myofiber loss.

Loss of cell details, hyperacidophilia, cytoplasmic invasion by heterophils:
acute myofiber necrosis.

N6. Turkey

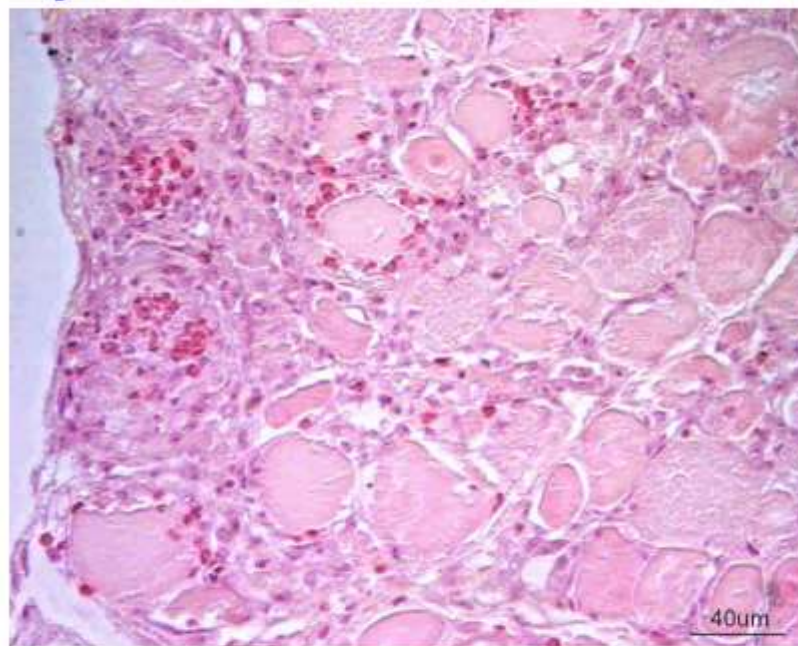
060842B



- H- Hyaline fibers:** rounded, separated from neighbours, hypereosinophilic.
M- Loss of cell details, cytoplasmic invasion by macrophages: subacute myofiber necrosis.

N6. Turkey

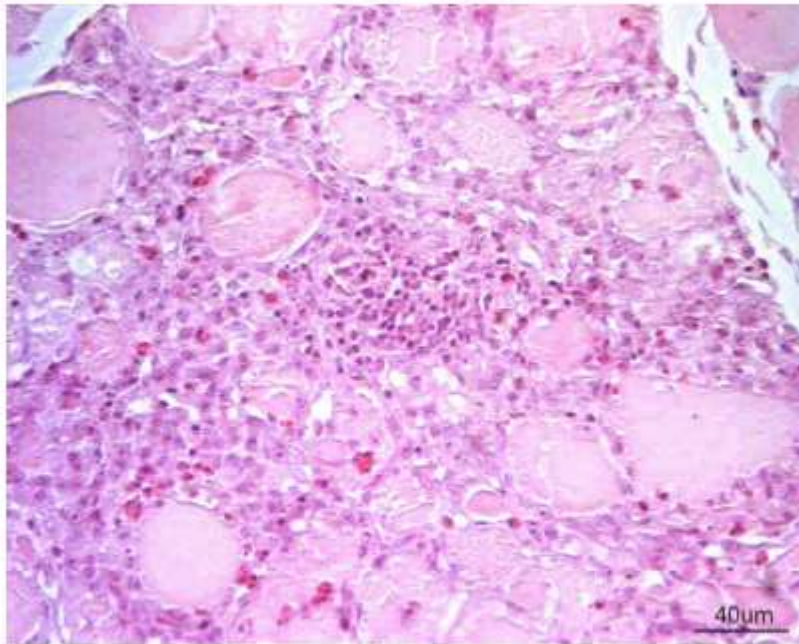
060842B



- Satellite cell activation**, presence of myoblasts (mononucleated, hypochromatic nucleus with a prominent nucleolus): attempt at regeneration.

N6. Turkey

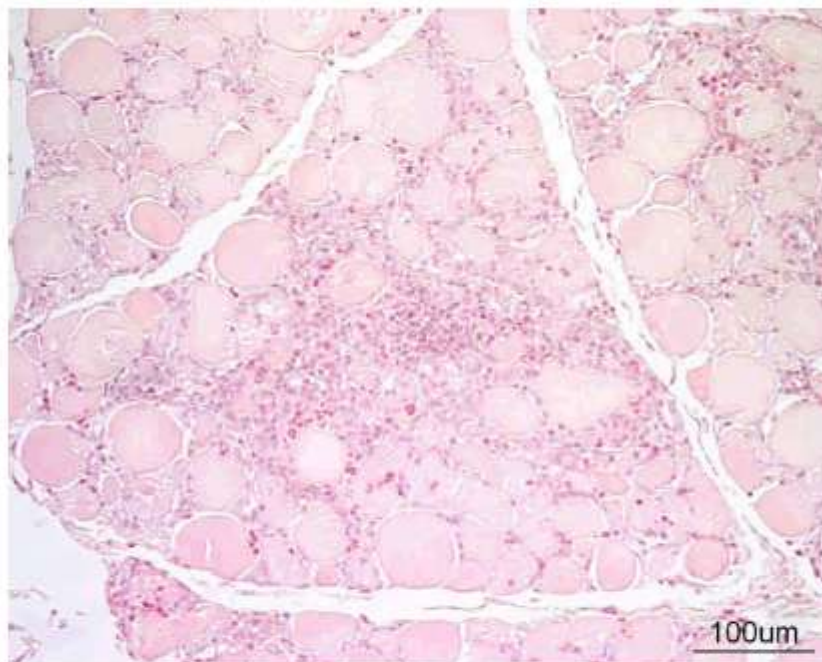
060842B



Interstitium: macrophages, heterophils, lymphocytes > oedema.

N6. Turkey/ diagnosis

060842B



Skeletal muscle, acute diffuse marked myofiber necrosis (**myopathy**) with macrophage infiltration and satellite cell activation (*onset estimated 3 to 5 days before sampling*).

Etiology: **monensin toxicity**.