



# ECVP/ESVP Summer School in Veterinary Pathology

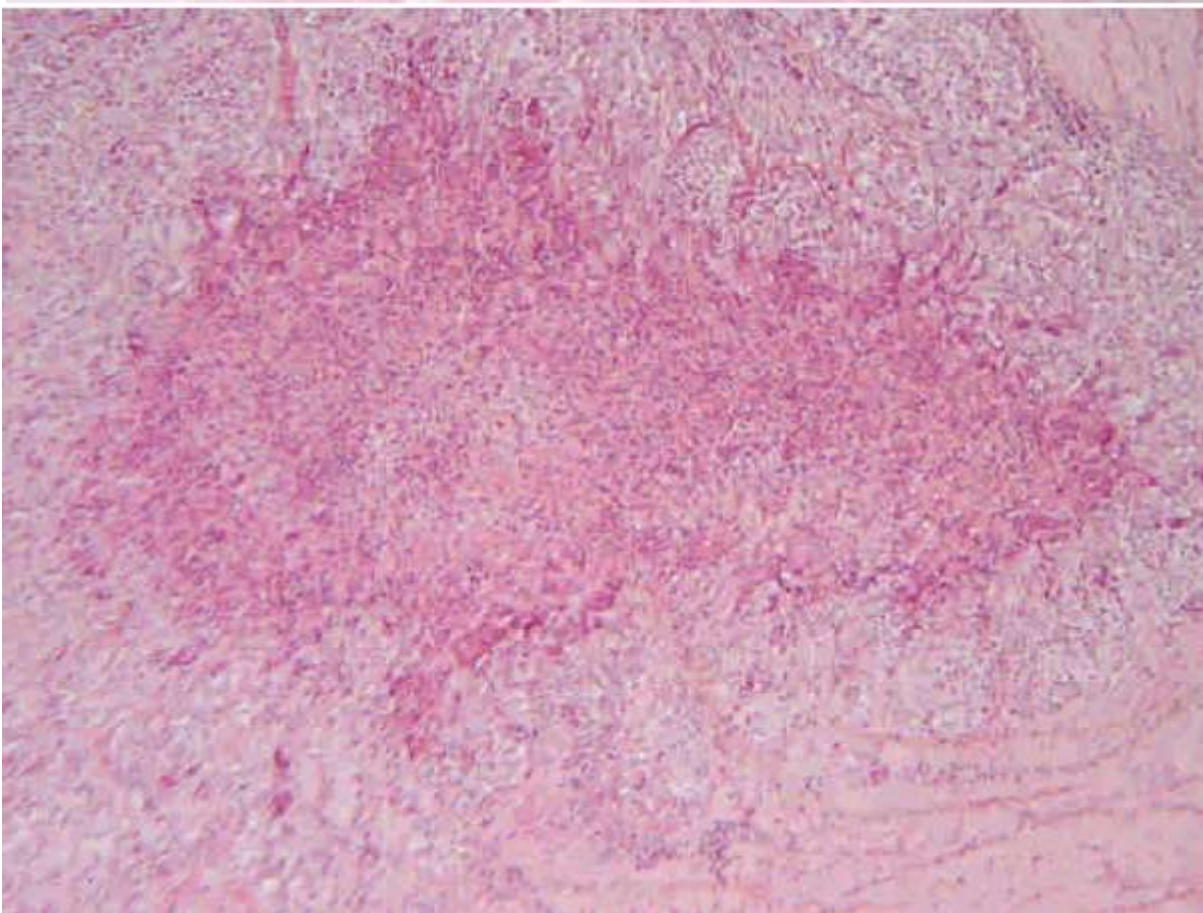
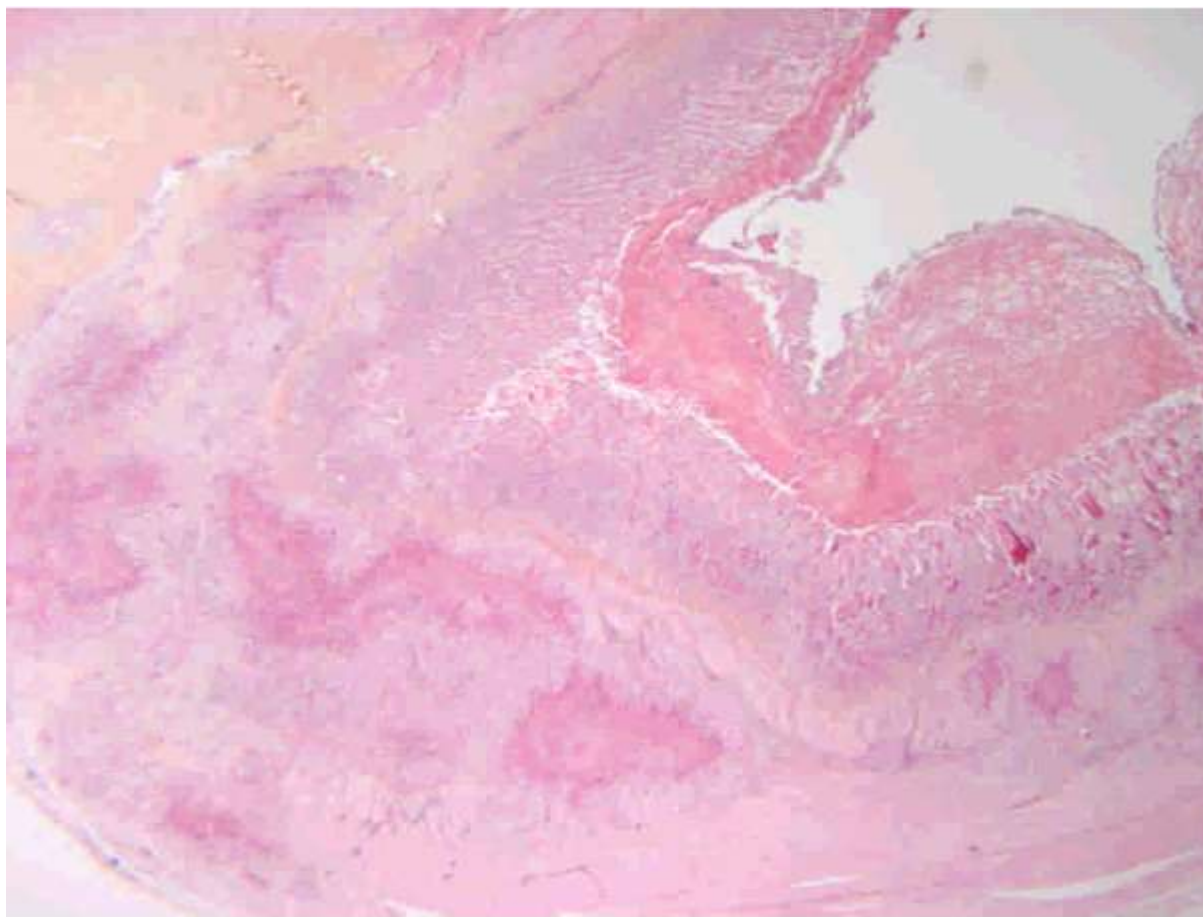


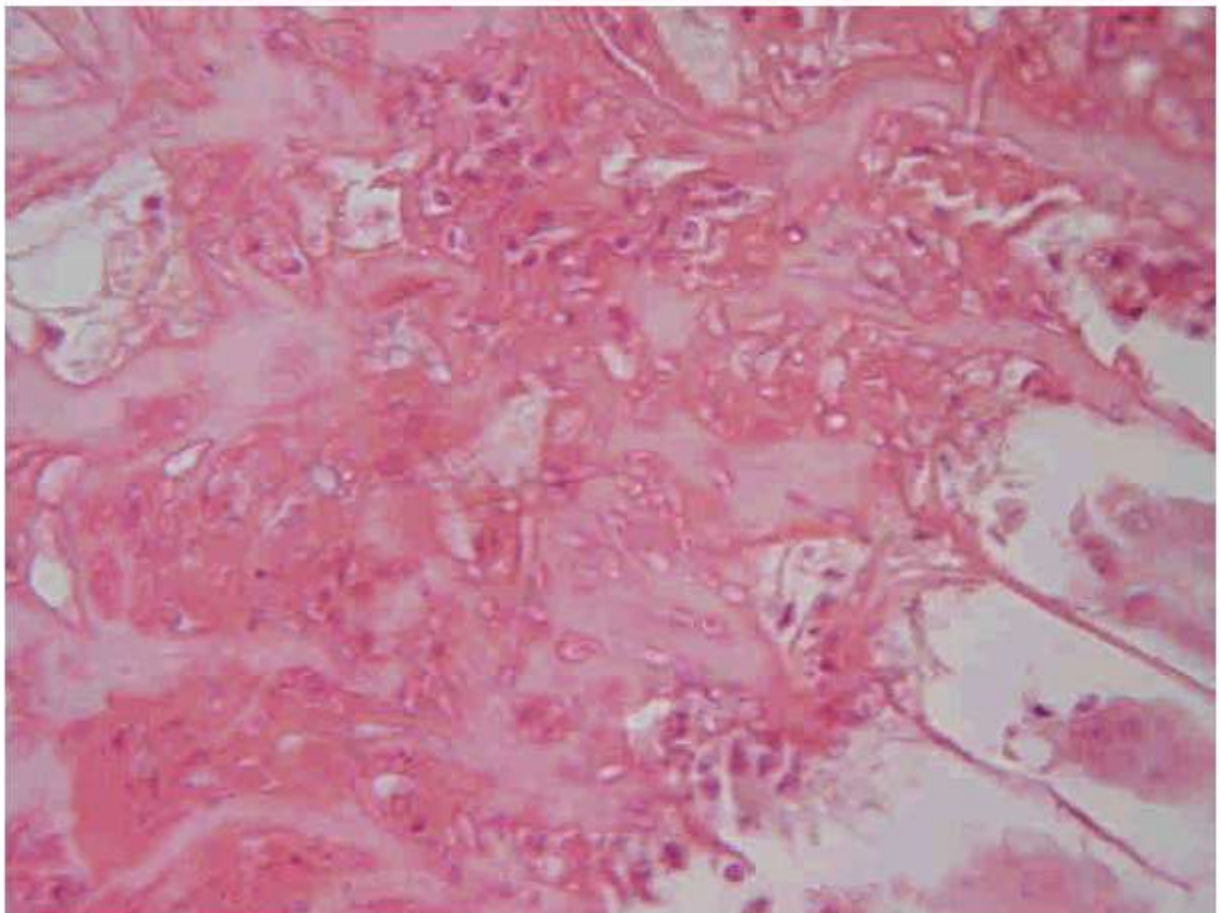
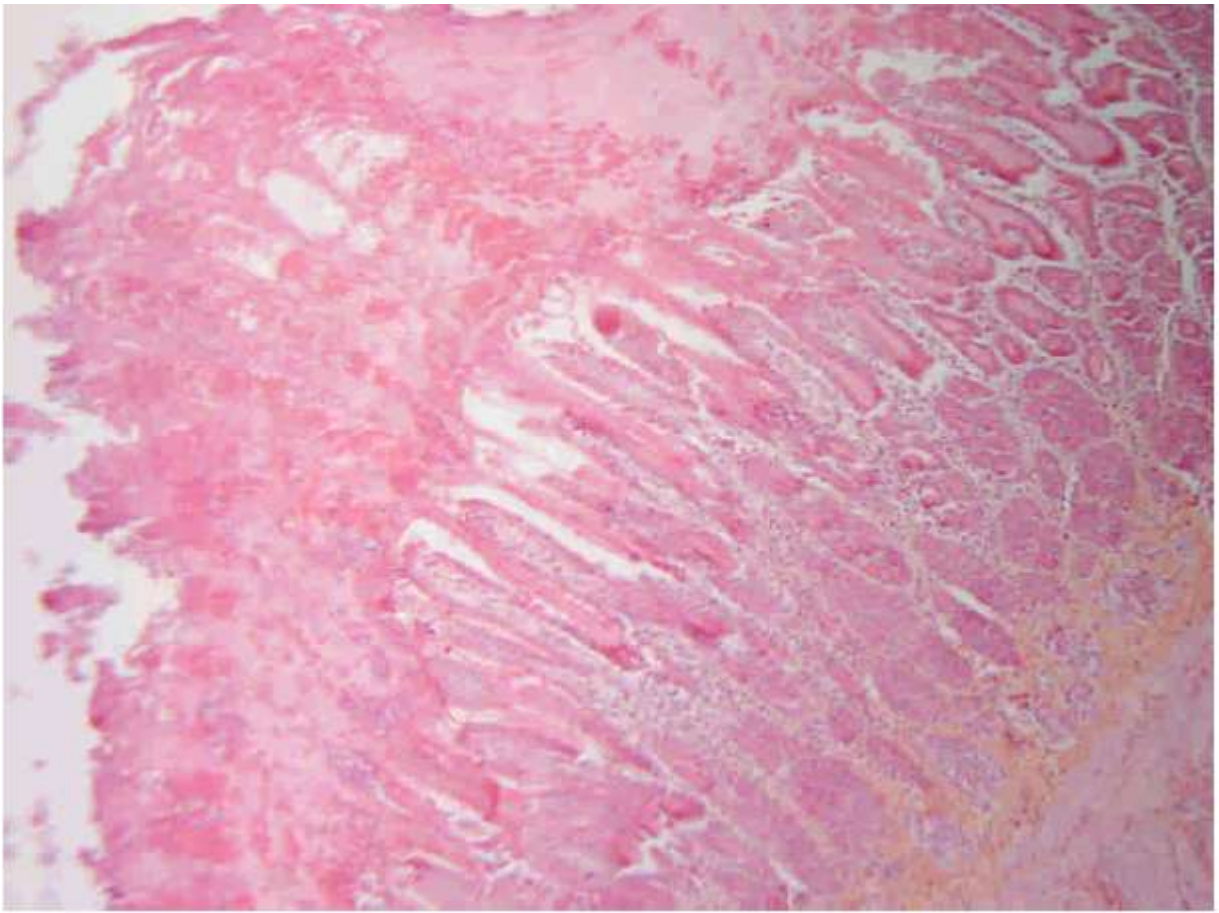
## Marie Curie Training Courses

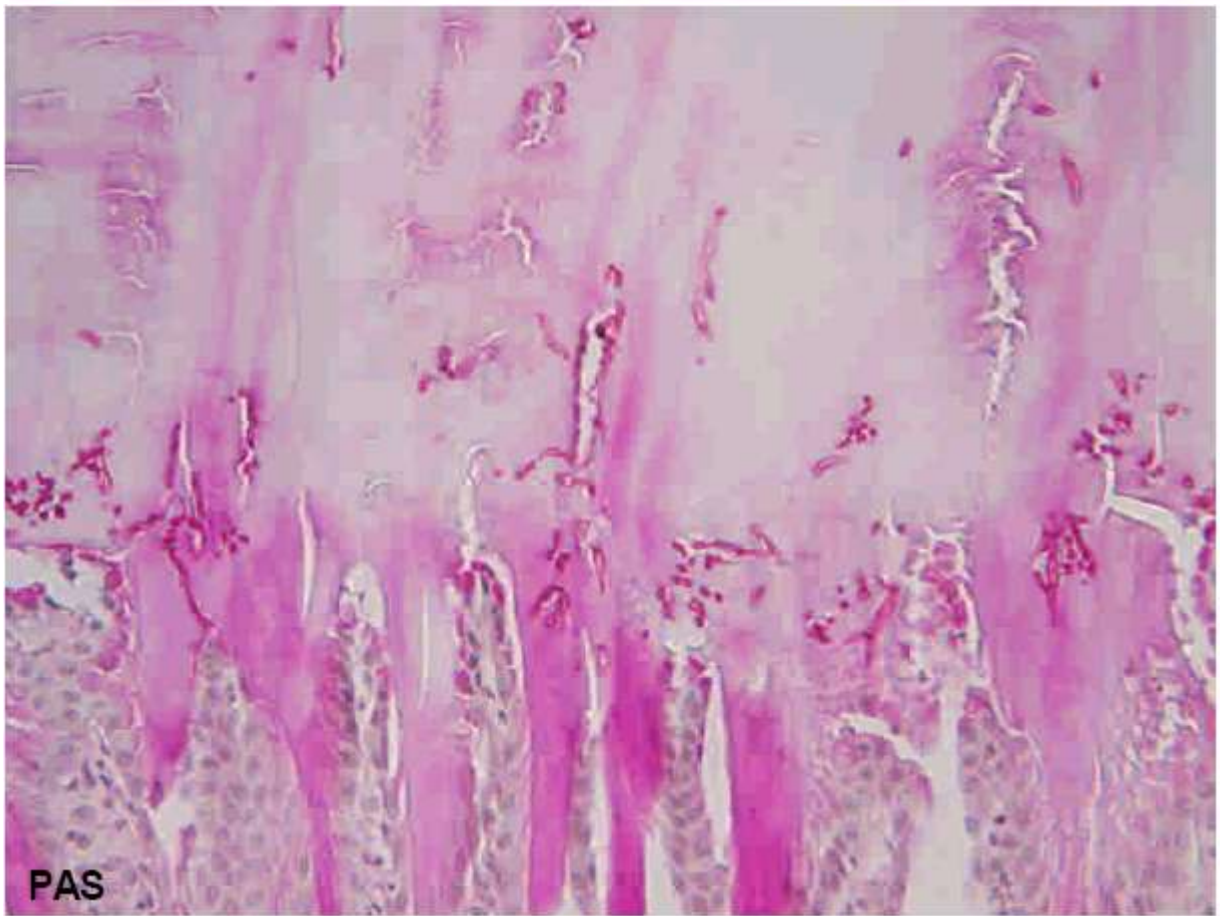
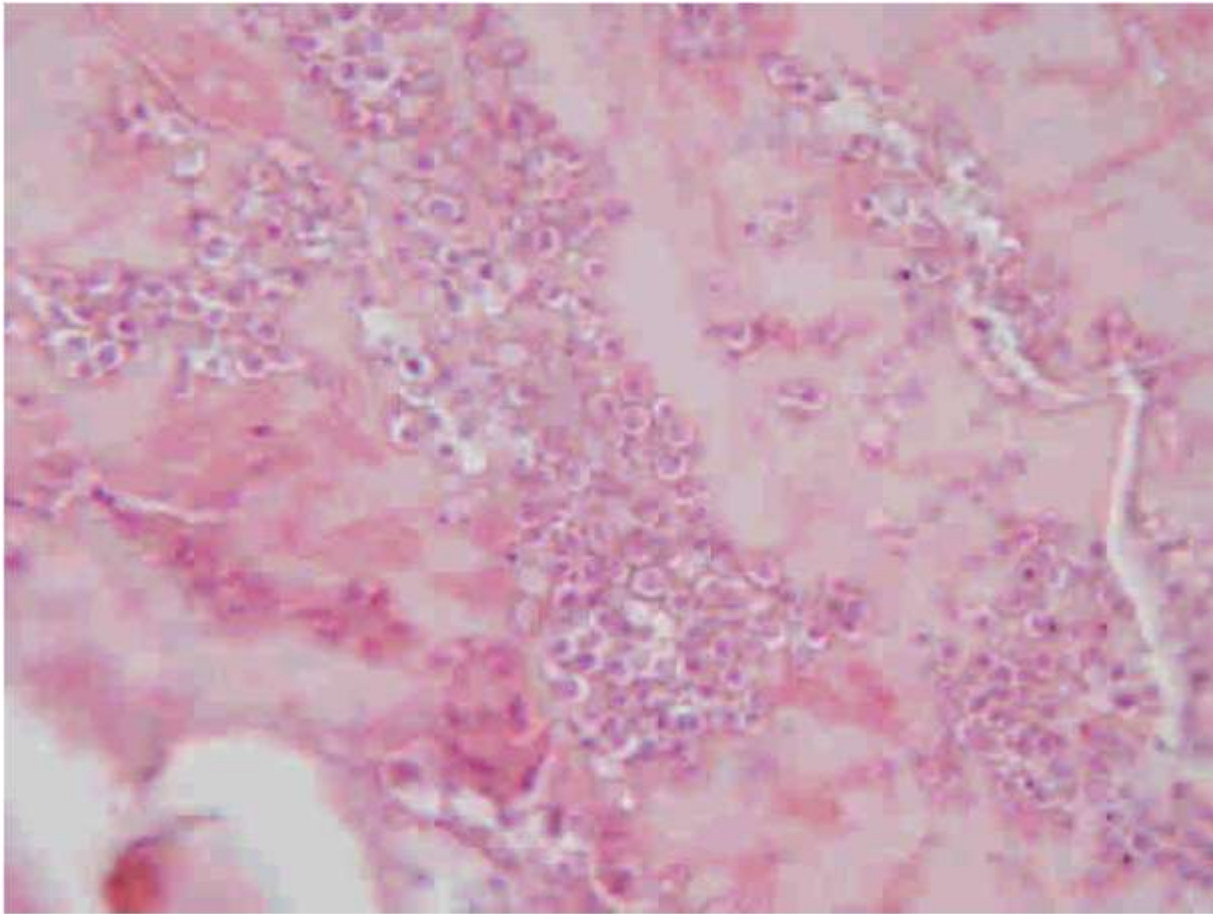
Summer School 2007 – Avian P6

### P6 : Tissue from a partridge

- Morphologic diagnosis/es
- Etiology/ies







## P6 : Tissue from a partridge

- Morphologic diagnosis/es  
Ventriculus, ventriculitis, diffuse, subacute, superficial ulcerative and mural necrotic and suppurative, associated with koilin infestation by spores and pseudohyphae, unseptate and unbranched, morphology consistent with *Candida* sp.
- Etiology/ies  
*Candida albicans*