

Marie Curie Training Courses

Summer School 2004 – Reptile Case 22

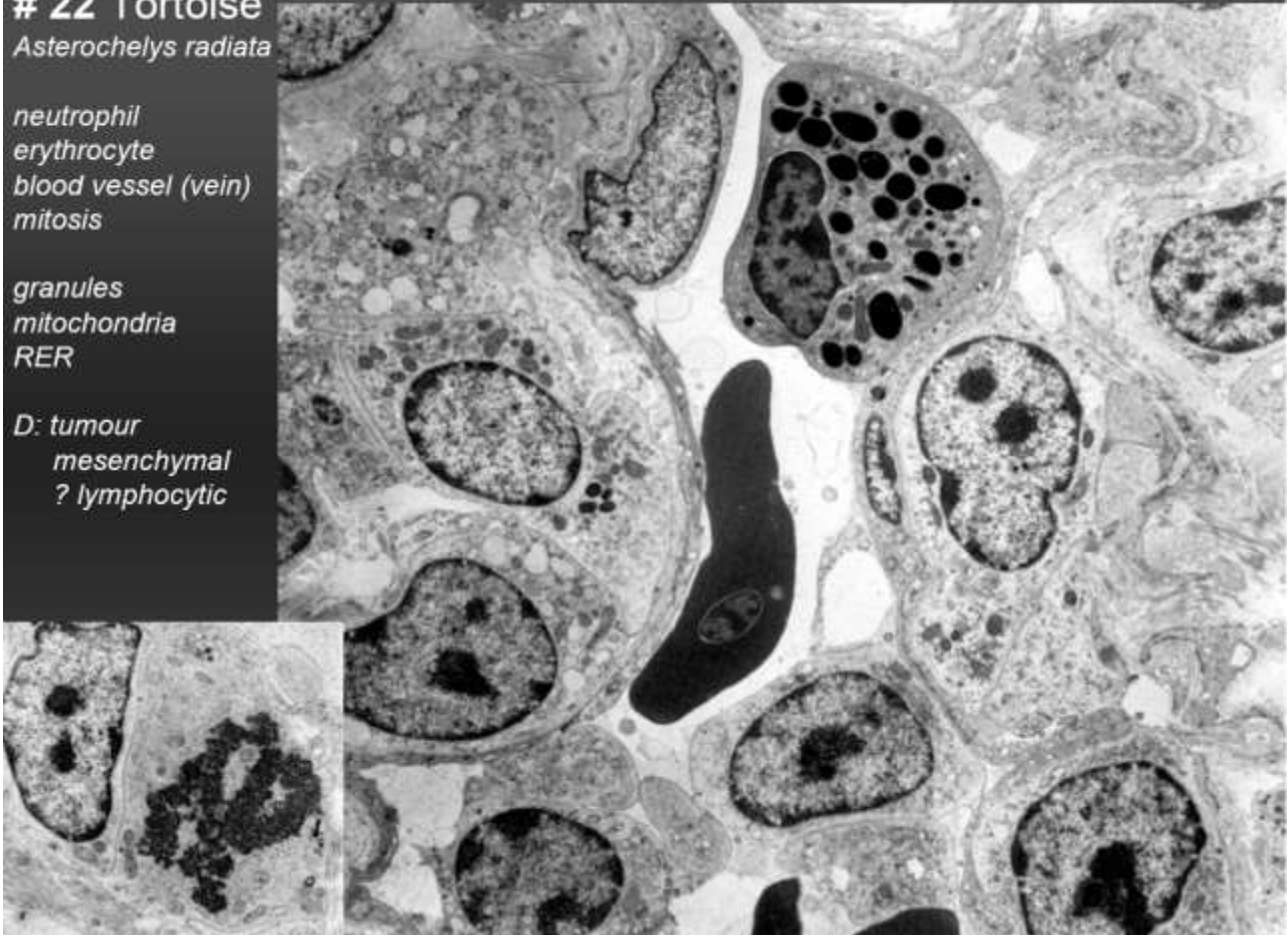
22 Tortoise

Astrochelys radiata

neutrophil
erythrocyte
blood vessel (vein)
mitosis

granules
mitochondria
RER

D: tumour
mesenchymal
? lymphocytic



22 Tortoise

Astrochelys radiata

Morphologic diagnosis: Lymphosarcoma

CD3: ++

T-cell

